

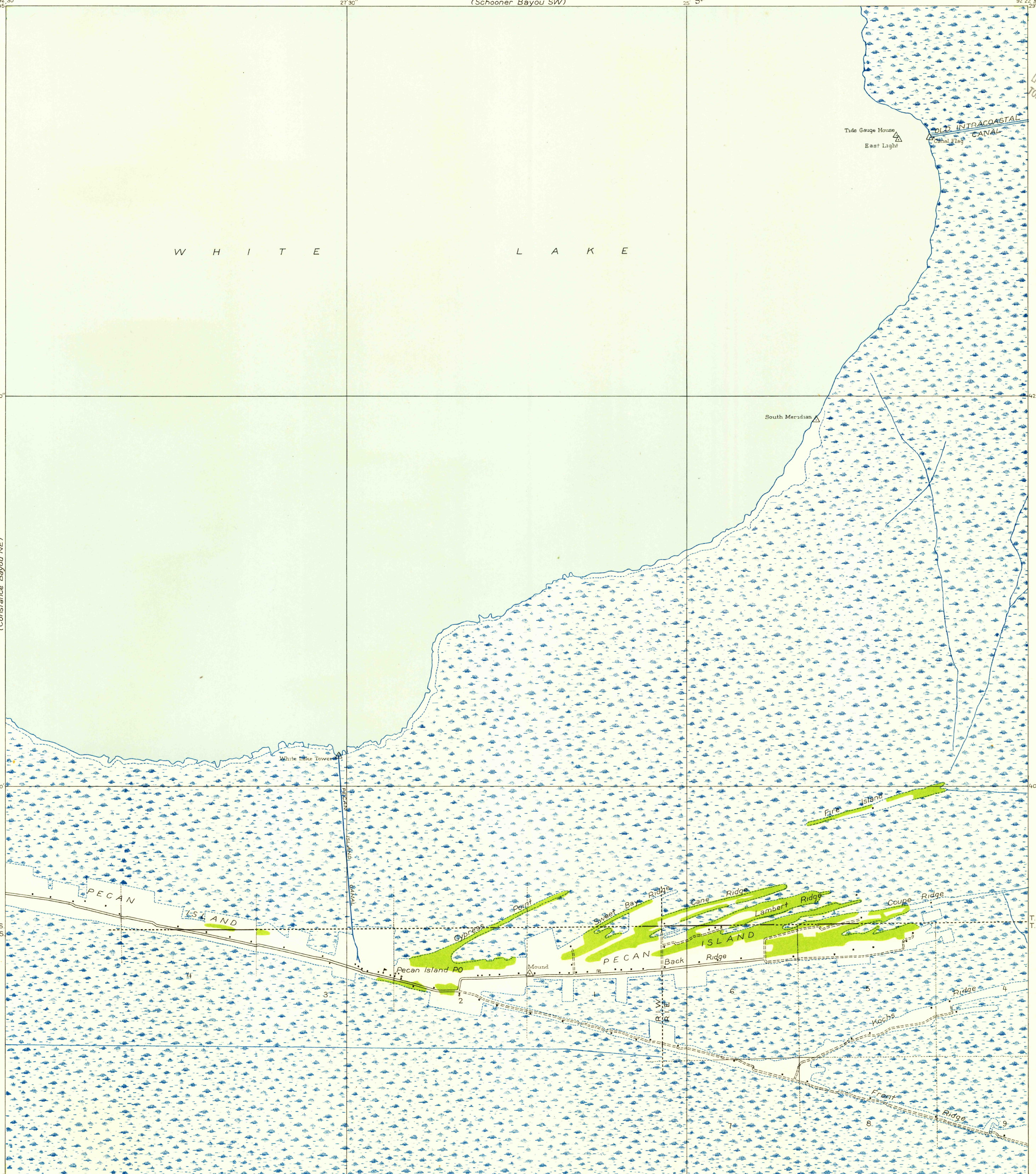
Advance sheet  
Subject to correction

U.S.G.S.  
FILE COPY  
TOPOGRAPHIC DIVISION

(Grand Lake East SE)

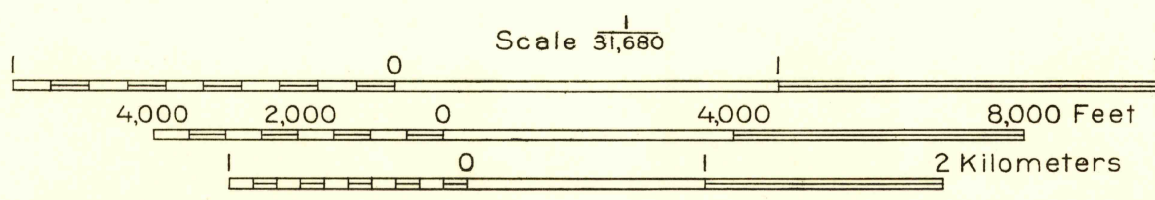
(Schooner Bayou SE)

(Constance Bayou SE)



Glenn S. Smith, Division Engineer  
Compiled by U. S. Geological Survey after field examination  
of aerial photographs taken by Air Corps, U. S. Army  
Control by U. S. Geological Survey and U. S. Coast and Geodetic Survey  
Field examination in 1932

TRUE NORTH  
MAGNETIC NORTH  
APPROXIMATE MEAN  
DECLINATION, 1982



USGS  
Historical File  
Topographic Division  
U.S.G.S.  
FILE COPY  
TOPOGRAPHIC DIVISION

INTERIOR—GEOLOGICAL SURVEY WASHINGTON, D. C.—1954  
Polyconic projection: 1927 North American datum  
Land lines added from General Land Office  
records adjusted to natural features and control

Township lines	---
Township lines, adjustment indefinite	- - - -
Section lines	---
Section lines, adjustment indefinite	- - - -
Grant lines	---
Grant lines, adjustment indefinite	- - - -
Ditches	---
Shallow ditches	---

PECAN ISLAND, LA.  
(N W)  
N2937.5—W9222.5/7.5

FEB 21 1955