

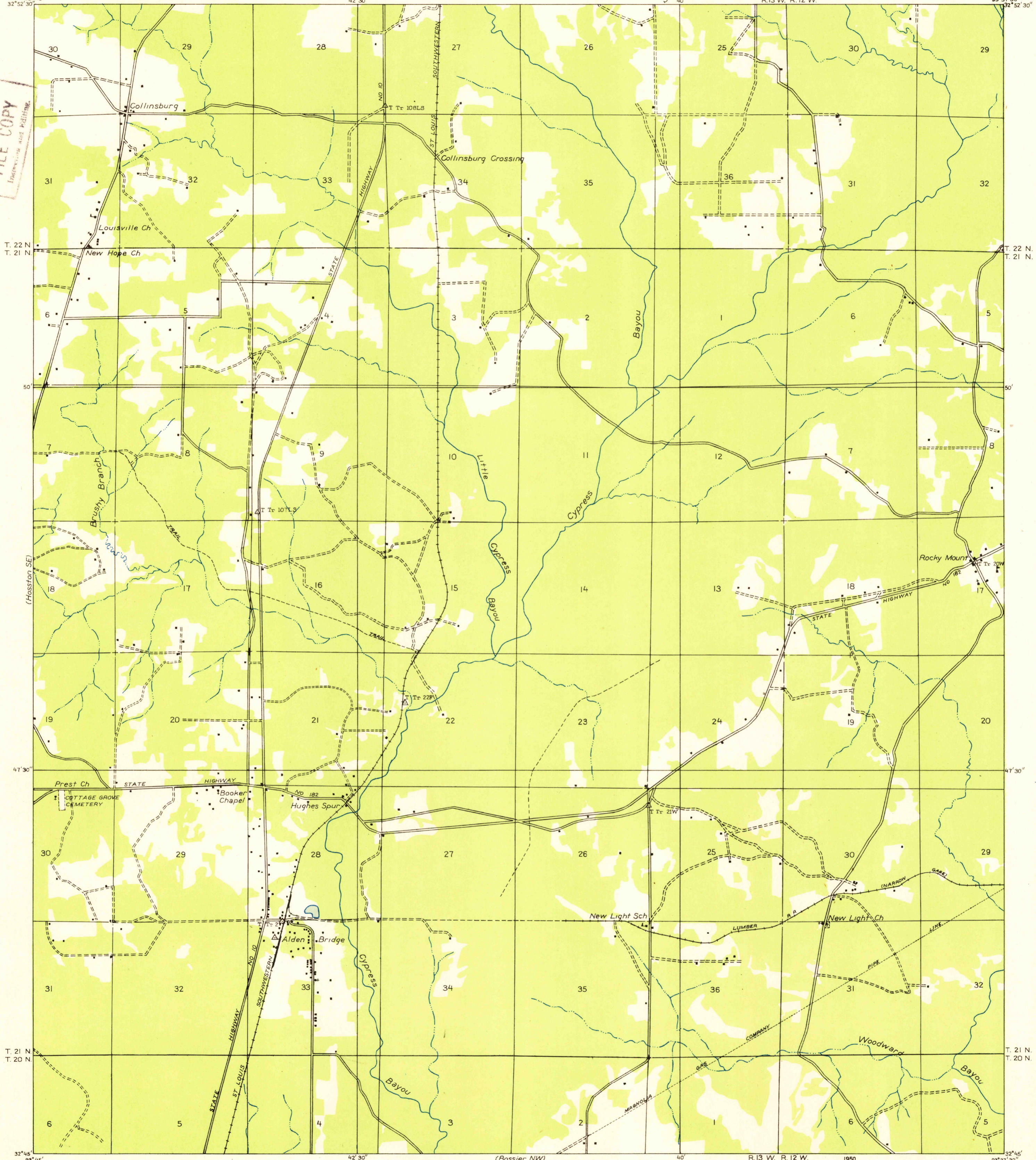
(Hosston NE) 93° 45'
32° 52' 30"

Advance sheet
Subject to correction

R. 13 W. R. 12 W.

93° 37' 30"
32° 52' 30"

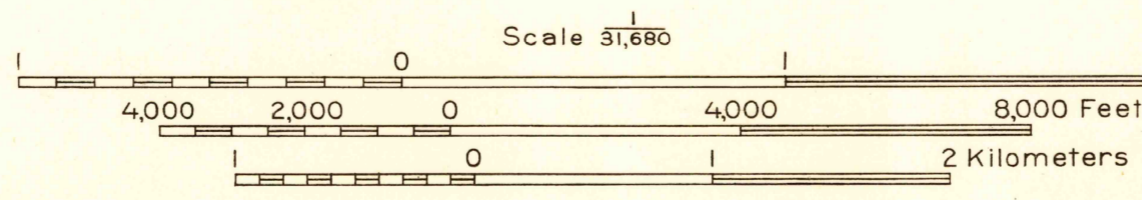
U.S.G.S.
FILE COPY
Inspection and Editing.



(Shreveport NE) 93° 45'
32° 45'

Glenn S. Smith, Division Engineer
Compiled by U. S. Geological Survey after field examination
of aerial photographs taken by Air Corps, U. S. Army
Control by U. S. Geological Survey
Field examination in 1932

APPROXIMATE MEAN
DECLINATION, 1932



USGS
Historical File
Topographic Division
U. S. G. S.
FILE COPY
Inspection and Editing.

Polyconic projection, 1927 North American datum
Land lines added from General Land Office
records adjusted to natural features and control
Township lines
Township lines, adjustment indefinite
Section lines
Section lines, adjustment indefinite
Grant lines
Grant lines, adjustment indefinite
Ditches
Shallow ditches

PLAIN DEALING, LA.
(S W)

N 3245-W9337.5/7.5