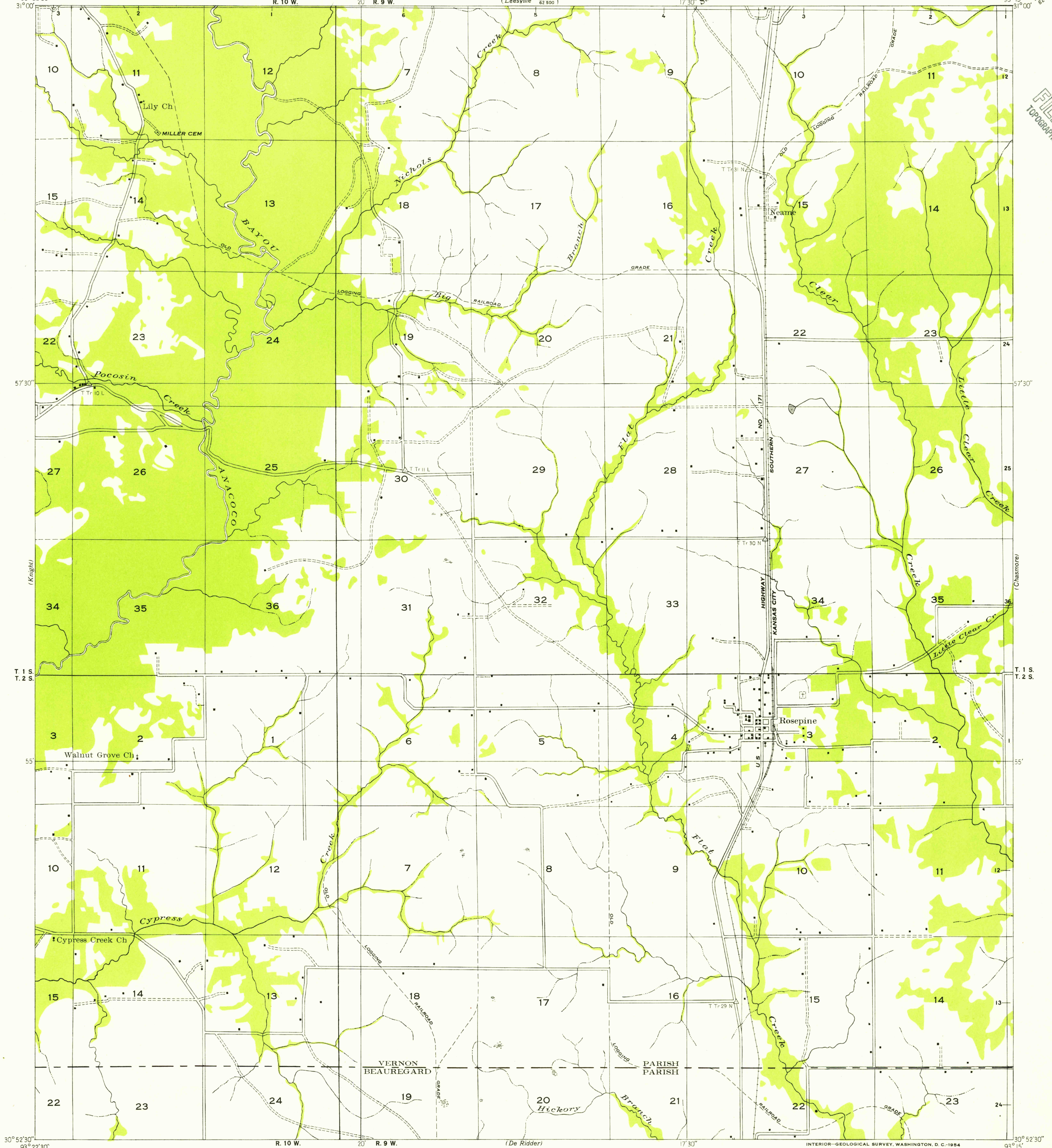


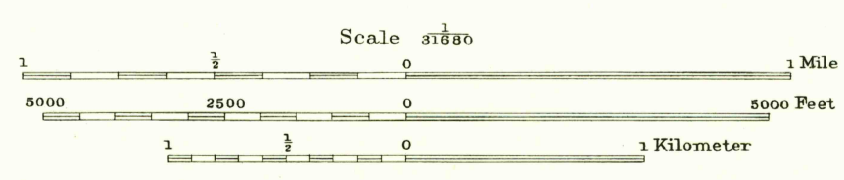
Advance sheet.
Subject to correction.

U.S.G.S.
FILE COPY
TOPOGRAPHIC DIVISION



Glenn S. Smith, Division Engineer
Compiled by Geological Survey from aerial photographs
Field examination in 1935

7' 1\"/>
MAGNETIC NORTH
APPROXIMATE MEAN
DECLINATION, 1936



USGS
Historical File
Topographic Division

U.S.G.S.
FILE COPY
TOPOGRAPHIC DIVISION

ROSEPINE, LA.
N3052.5-W9315/7.5

SEP 14 1954
1010