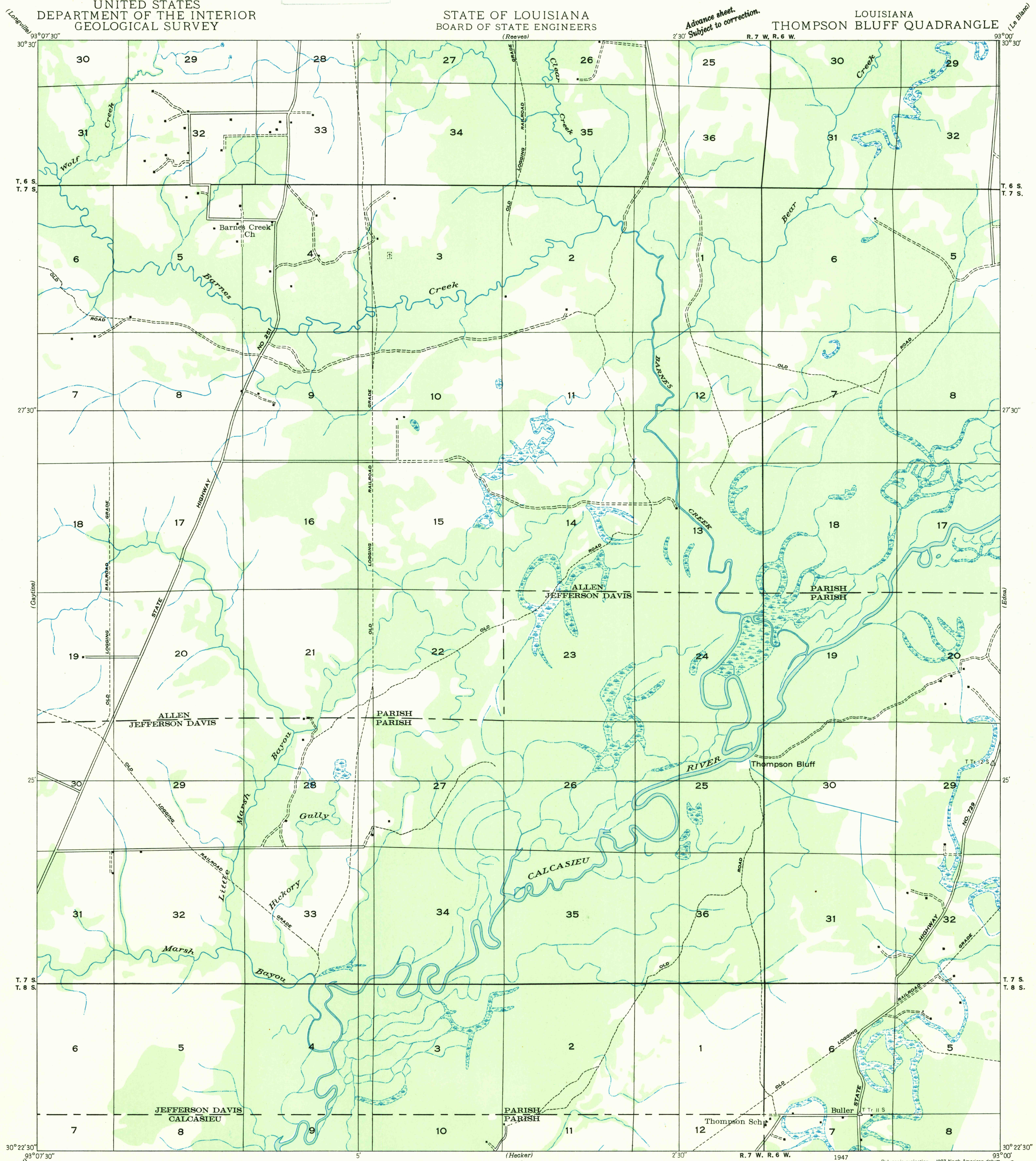


U.S.G.S.
FILE COPY
Inspection and Editing.

UNITED STATES
DEPARTMENT OF THE INTERIOR
GEOLOGICAL SURVEY

STATE OF LOUISIANA
BOARD OF STATE ENGINEERS
(Reeves)

LOUISIANA
THOMPSON BLUFF QUADRANGLE



Advance sheet.
Subject to correction.

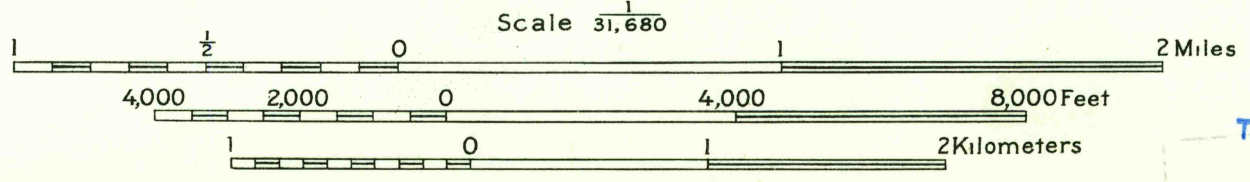
(Le Blau)

(Longville)
93°07'30"
30°30'
T. 6 S.
T. 7 S.
27°30'
(Cayline)
25'
T. 7 S.
T. 8 S.
30°22'30"

30°30'
T. 6 S.
T. 7 S.
27°30'
(Edna)
25'
T. 7 S.
T. 8 S.
30°22'30"

Glenn S. Smith, Division Engineer
Compiled by Geological Survey from aerial photographs
Field examination in 1935

7 1/2°
TRUE NORTH
MAGNETIC NORTH
APPROXIMATE MEAN
DECLINATION, 1935



USGS
Historical File
Topographic Division
U.S.G.S.
FILE COPY
Inspection and Editing.

Polygonic projection. 1927 North American datum
Land lines added from General Land Office
records adjusted to natural features and control

THOMPSON BLUFF, LA.

N9300-W3022.5/7.5

APR 16 1947

615