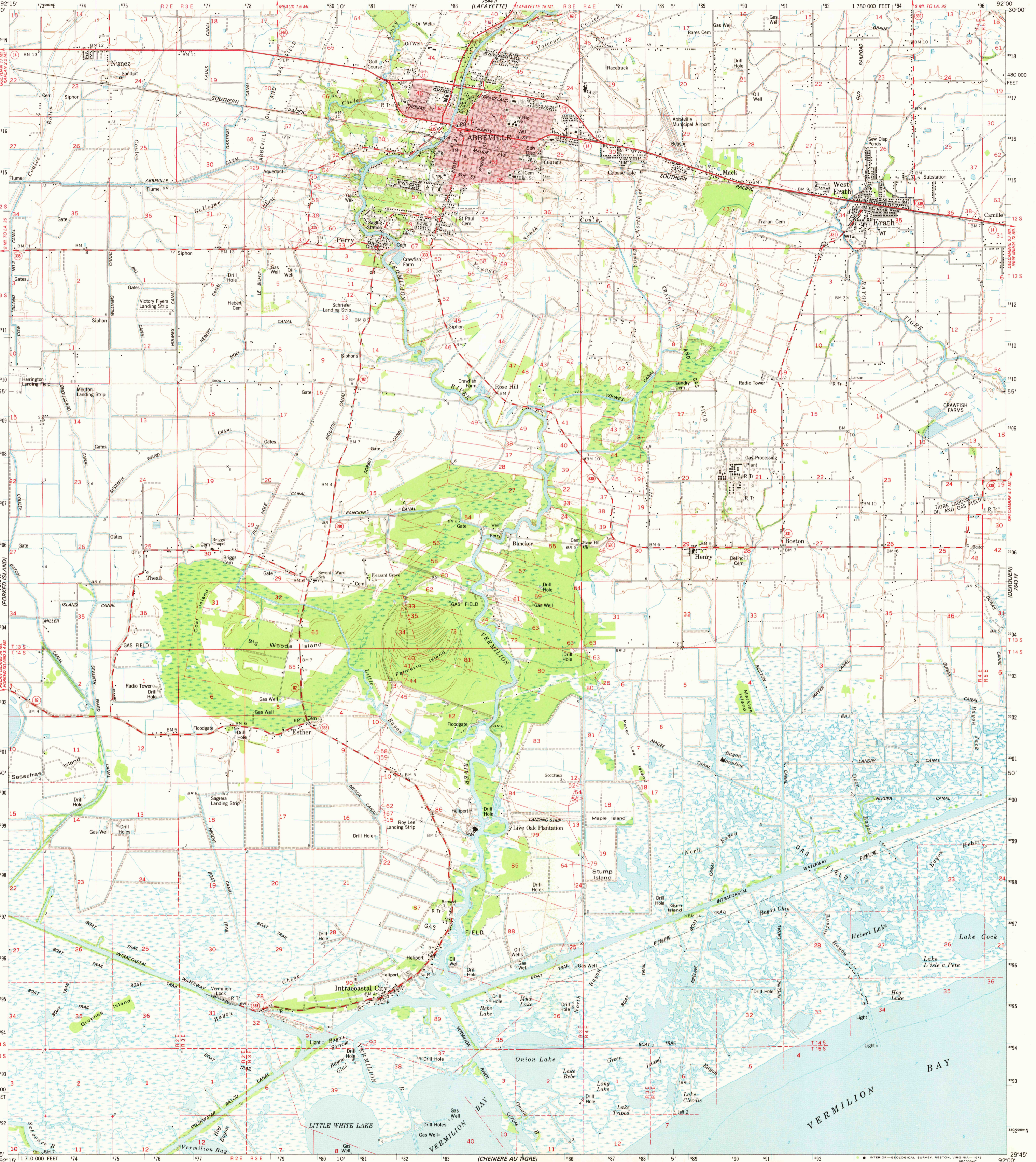


UNITED STATES
DEPARTMENT OF THE INTERIOR
GEOLOGICAL SURVEY

STATE OF LOUISIANA
DEPARTMENT OF PUBLIC WORKS
BATON ROUGE

ABBEVILLE QUADRANGLE
LOUISIANA—VERMILION PARISH
15 MINUTE SERIES (TOPOGRAPHIC)



Mapped, edited, and published by the Geological Survey
Control by USGS, NOS/NOAA, USCE, and Louisiana Department of Highways
Compiled in 1977 from 1:24,000-scale maps dated 1975
Selected hydrographic data compiled from NOS/NOAA Chart 11349 (1976)
This information is not intended for navigational purposes
Projection and 10,000-foot grid ticks: Louisiana coordinate system, south zone (Lambert conformal conic)
1000-meter Universal Transverse Mercator grid ticks, zone 15, shown in blue. 1927 North American datum
Dotted land lines established by private survey
Where omitted, land lines have not been established
Red tint indicates areas in which only landmark buildings are shown
All or part of this quadrangle lies within a subsidence area
Supersedes map dated 1954

UTM GRID AND 1975 MAGNETIC NORTH DECLINATION AT CENTER OF SHEET
SCALE 1:62,500
CONTOUR INTERVAL 5 FEET
NATIONAL GEODETIC VERTICAL DATUM OF 1929
DEPTH CURVES AND SOUNDINGS IN FEET—DATUM IS MEAN LOW WATER
SHORELINE SHOWN REPRESENTS THE APPROXIMATE LINE OF MEAN HIGH WATER
THE MEAN RANGE OF TIDE IS APPROXIMATELY 1.5 FEET
THIS MAP COMPLIES WITH NATIONAL MAP ACCURACY STANDARDS
FOR SALE BY U. S. GEOLOGICAL SURVEY, DENVER, COLORADO 80225, OR RESTON, VIRGINIA 22092
AND BY THE STATE OF LOUISIANA, DEPARTMENT OF PUBLIC WORKS, BATON ROUGE, LOUISIANA 70804
A FOLDER DESCRIBING TOPOGRAPHIC MAPS AND SYMBOLS IS AVAILABLE ON REQUEST

ROAD CLASSIFICATION
Primary highway, hard surface — Light-duty road, hard or improved surface
Secondary highway, hard surface — Unimproved road
Interstate Route — U. S. Route — State Route
This area also covered by 7.5 minute, 1:24,000-scale maps: Abbeville East 1975, Abbeville West 1975, Intracoastal City 1975, and Hebert Lake 1975.
ABBEVILLE, LA.
N2945—W9200/15
1975
AMS 7543 I—SERIES V785

USGS
Historical File
Topographic Division

JUN 06 1978

5100