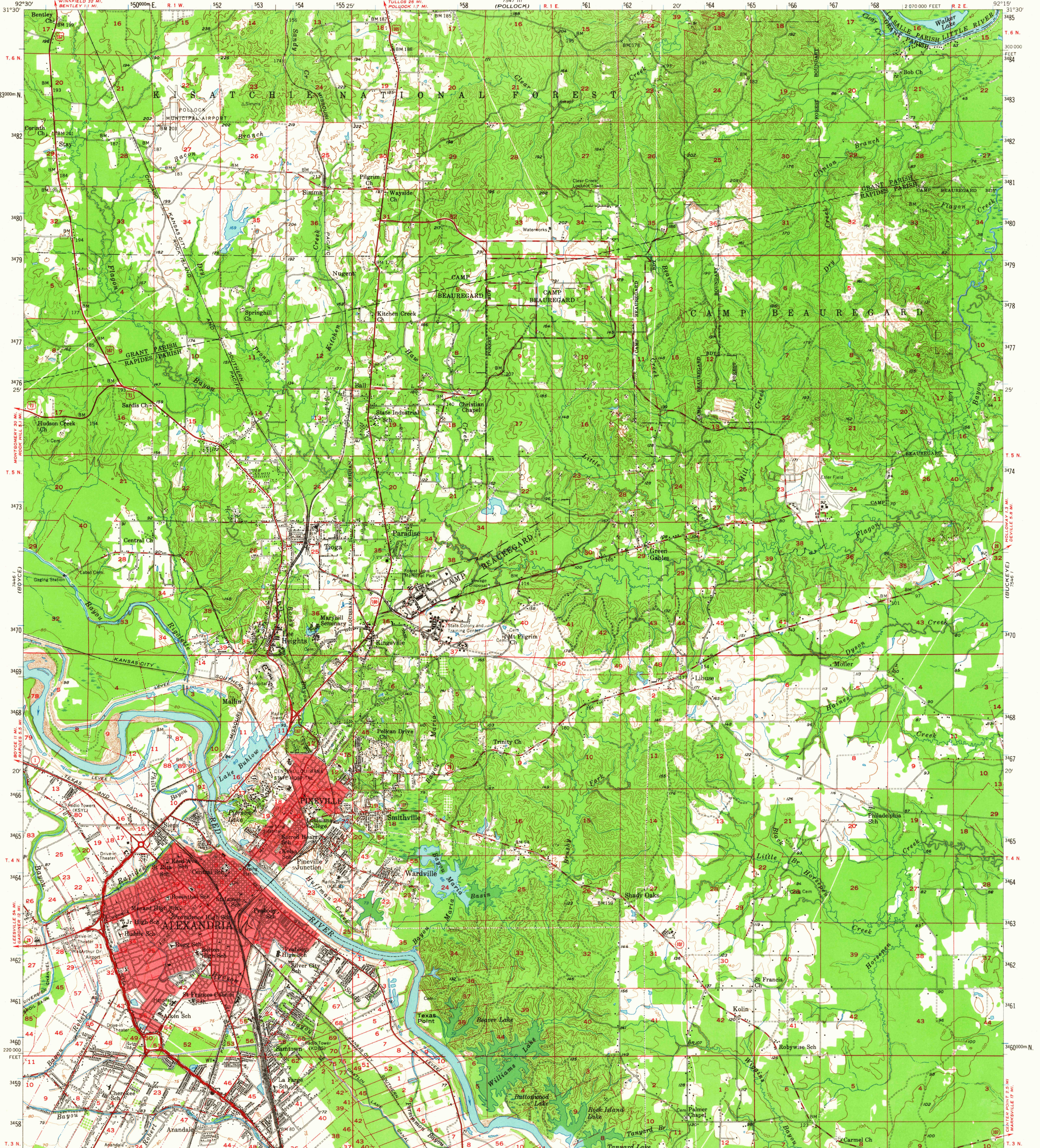


UNITED STATES
DEPARTMENT OF THE INTERIOR
GEOLOGICAL SURVEY

ALEXANDRIA QUADRANGLE
LOUISIANA
15 MINUTE SERIES (TOPOGRAPHIC)



Mapped, edited, and published by the Geological Survey
Control by USGS, USC&GS, USCE, and Louisiana Geodetic Survey
Topography from aerial photographs by Kelsh plotter and by
planetable surveys 1956-1957. Aerial photographs taken 1955
Polyconic projection. 1927 North American datum
10,000-foot grid based on Louisiana coordinate system, north zone
1000-meter Universal Transverse Mercator grid ticks,
zone 15, shown in blue
Red tint indicates areas in which only
landmark buildings are shown

UTM GRID AND 1957 MAGNETIC NORTH
DECLINATION AT CENTER OF SHEET

SCALE 1:62,500

CONTOUR INTERVAL 20 FEET
DOTTED LINES REPRESENT 5-FOOT CONTOURS
DATUM IS MEAN SEA LEVEL

ROAD CLASSIFICATION
Heavy-duty ——— Light-duty ———
Medium-duty ——— Unimproved dirt ———
U.S. Route ——— State Route ———

USGS
Historical File
Topographic Division

QUADRANGLE LOCATION

U.S.G.S.
ALEXANDRIA, LA.
N 3115-W9215/15
1957
AMS 7546 IV-SERIES V785

4405
APR 1 1965

FILE COPY
TOPOGRAPHIC DIVISION