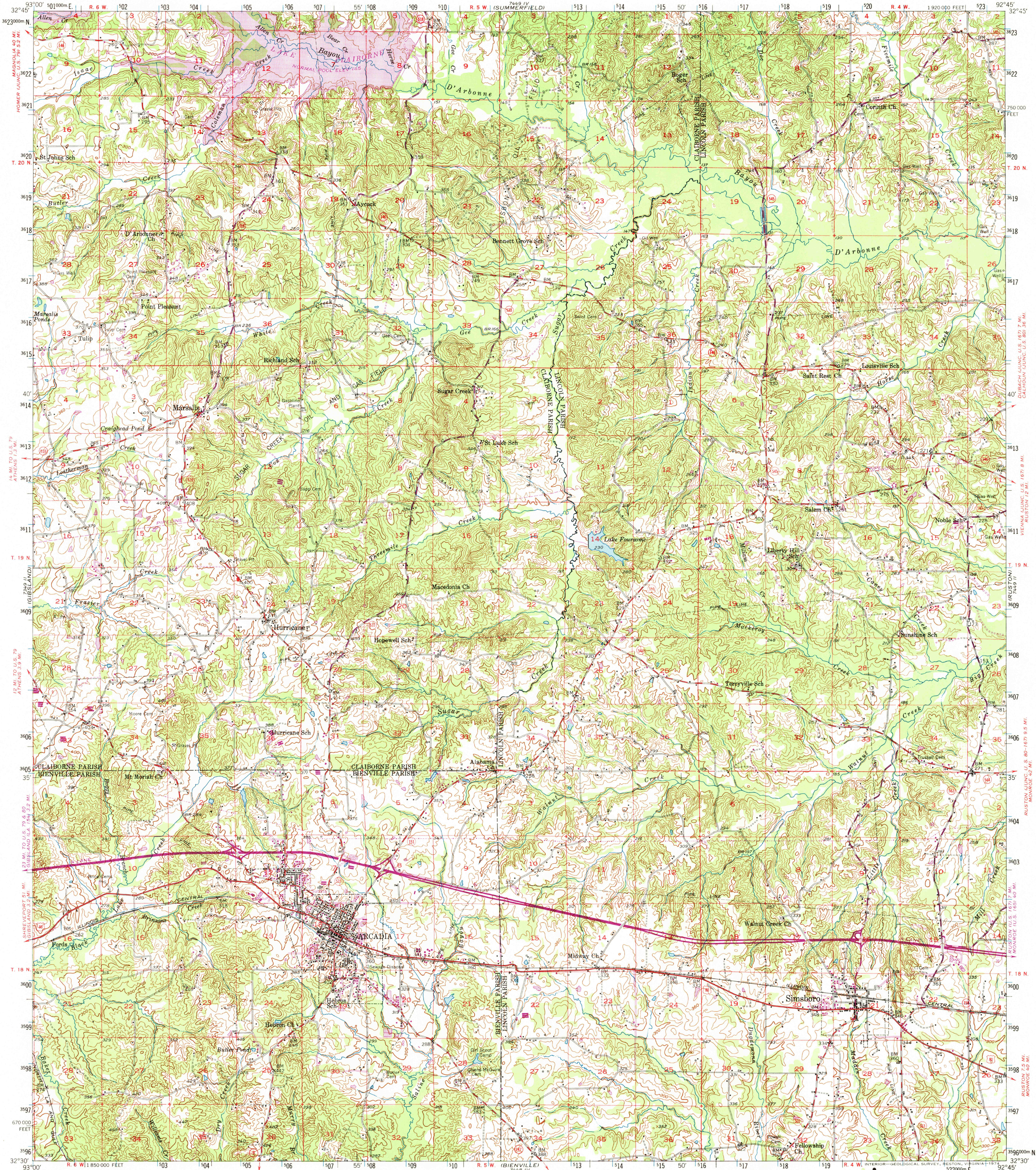


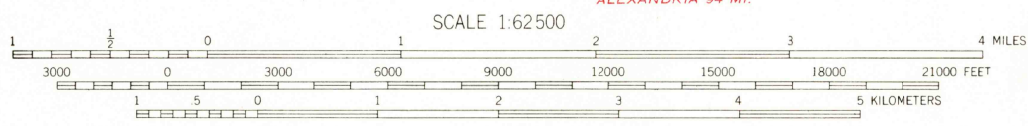
UNITED STATES  
DEPARTMENT OF THE INTERIOR  
GEOLOGICAL SURVEY

STATE OF LOUISIANA  
DEPARTMENT OF PUBLIC WORKS  
BATON ROUGE

ARCADIA QUADRANGLE  
LOUISIANA  
15 MINUTE SERIES (TOPOGRAPHIC)



Mapped, edited, and published by the Geological Survey  
Control by USGS, USC&GS, and Louisiana Geodetic Survey  
Culture and drainage in part compiled from aerial photographs  
taken 1939. Topography by planetable surveys 1948-1950  
Polyconic projection. 1927 North American datum  
10,000-foot grid based on Louisiana coordinate system, north zone  
1000-meter Universal Transverse Mercator grid ticks,  
zone 15, shown in blue  
Revisions shown in purple compiled in cooperation with  
Louisiana Department of Public Works from aerial photographs  
taken 1969. Woodland revised within Lake Claiborne  
This information not field checked



ROAD CLASSIFICATION  
Heavy-duty ——— Light-duty ———  
Medium-duty ——— Unimproved dirt ———  
Interstate Route U.S. Route State Route



ARCADIA, LA.  
N3230—W9245/15  
1950

PHOTOREVISED 1969  
AMS 7449 III—SERIES V785

THIS MAP COMPLIES WITH NATIONAL MAP ACCURACY STANDARDS  
FOR SALE BY U.S. GEOLOGICAL SURVEY, DENVER, COLORADO 80225, OR RESTON, VIRGINIA 22092  
AND BY THE STATE OF LOUISIANA, DEPARTMENT OF PUBLIC WORKS, BATON ROUGE, LOUISIANA 70804  
A FOLDER DESCRIBING TOPOGRAPHIC MAPS AND SYMBOLS IS AVAILABLE ON REQUEST

USGS  
Historical File  
Topographic Division

5700

DEC 0 2 1974