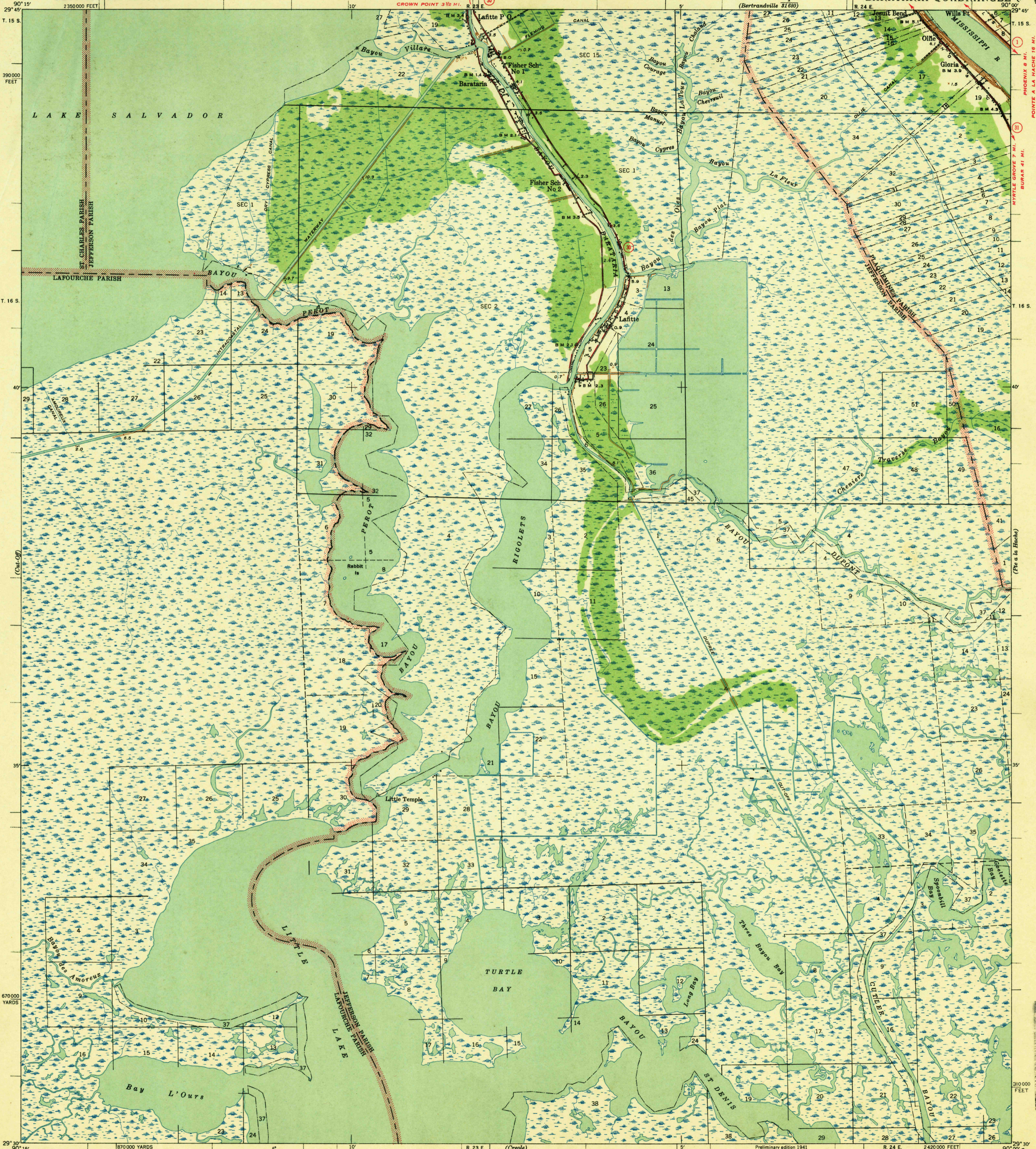


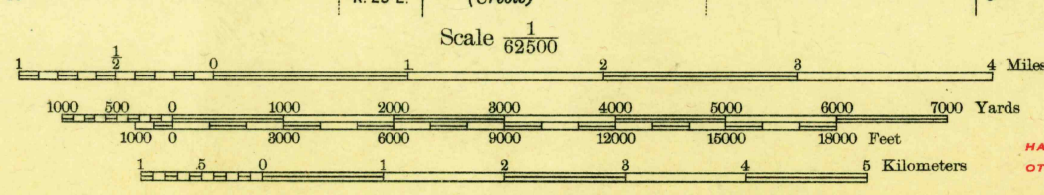
GREYNA 17 MI.
CROWN POINT 3 1/2 MI.

GREYNA 14 MI. (1)
LOUISIANA (1)
OAKVILLE 2 1/2 MI.
BARATARIA QUADRANGLE



Topography by L. E. Marsden
Surveyed in 1939
Base compiled in cooperation with the State of Louisiana

TRUE NORTH
MAGNETIC NORTH
APPROXIMATE MEAN
DECLINATION, 1939



Contour interval 5 feet
Datum is mean sea level

USCS
Historical File
Topographic Division

RUTES USUALLY TRAVELED
HARD IMPERVIOUS SURFACES
OTHER SURFACE IMPROVEMENTS
1940

Preliminary edition 1941
R 24 E 242000 FEET
POLYCONIC PROJECTION, 1927 NORTH AMERICAN DATUM
5000 YARD GRID BASED ON U.S. ZONE SYSTEM C
10,000 FOOT GRID BASED ON LOUISIANA (SOUTH)
RECTANGULAR COORDINATE SYSTEM

Land lines added from General Land Office
records adjusted to natural features and control

U.S. ROUTE
STATE ROUTE

BARATARIA, LA.
N2900-W9000/15