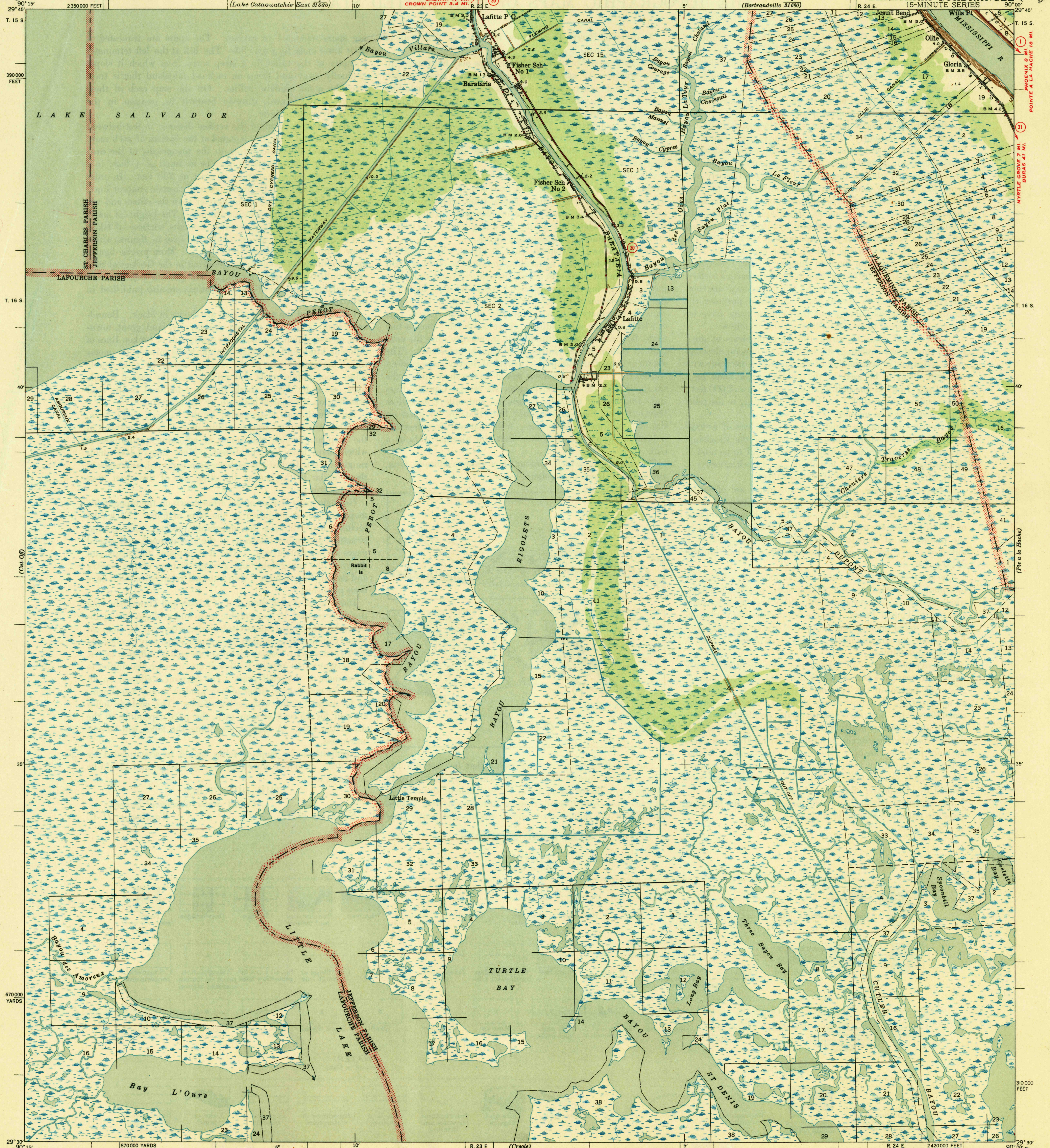


(Lake Cataouatchie)
West 11850

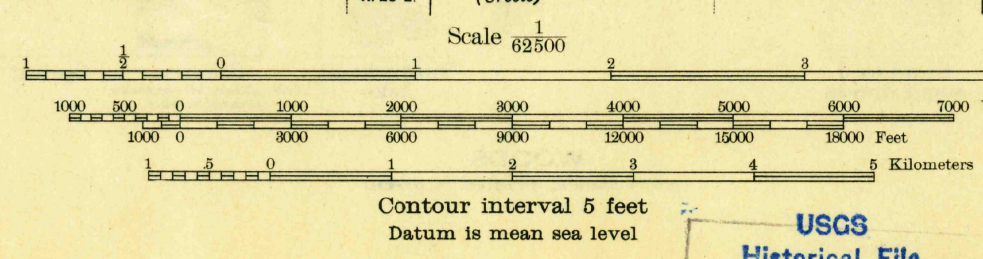
UNITED STATES
DEPARTMENT OF THE INTERIOR
GEOLOGICAL SURVEY

U. S. G. S.
FILE COPY
Investigation and Mining.



Topography by L. E. Marsden
Surveyed in 1939
Base compiled in cooperation with the State of Louisiana

TRUE NORTH
MAGNETIC NORTH
APPROXIMATE MEAN
DECLINATION, 1939



ROAD CLASSIFICATION
1944
Dependable hard-surface heavy-duty road
Unsurfaced, graded
Secondary hard-surface all-weather road
Dirt road
Loose-surface, graded
Unsurfaced, graded
dry weather roads
U. S. Route
State Route
More than two lanes indicated along road with tick at point of change

Land lines added from General Land Office records adjusted to natural features and control

BARATARIA, LA.
Edition of 1944
N 2930 - W 9000 / 15

USGS
Historical File
U. S. G. S.
FILE COPY

4185