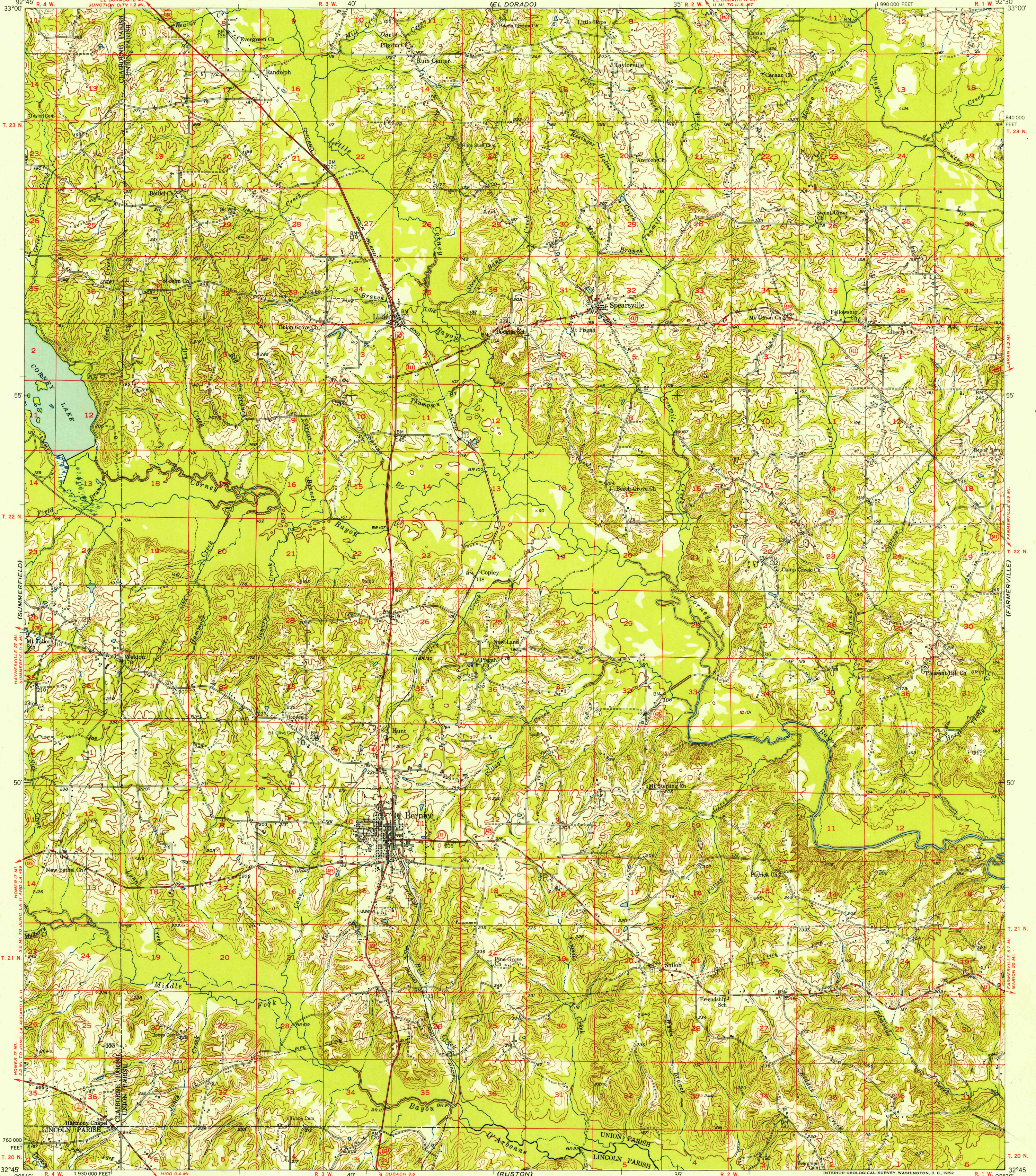


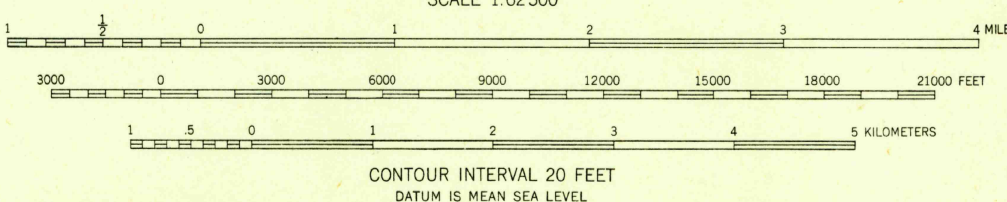
U. S. G. S.
FILE COPY
Inspection and Rating.



Mapped, edited, and published by the Geological Survey

Control by USGS and USC&GS
Culture and drainage in part compiled from aerial photographs taken 1947 and 1949. Topography by plane-table methods 1943-1944 and 1950-1951
Polyconic projection. 1927 North American datum
10,000-foot grid based on Louisiana coordinate system, north zone

TRUE NORTH
MAGNETIC NORTH
APPROXIMATE MEAN DECLINATION, 1951



THIS MAP COMPLIES WITH NATIONAL MAP ACCURACY STANDARDS
FOR SALE BY U. S. GEOLOGICAL SURVEY, FEDERAL CENTER, DENVER, COLORADO OR WASHINGTON 25, D. C.
AND BY THE STATE OF LOUISIANA, DEPARTMENT OF PUBLIC WORKS, BATON ROUGE 4, LOUISIANA
A FOLDER DESCRIBING TOPOGRAPHIC MAPS AND SYMBOLS IS AVAILABLE ON REQUEST

USGS
Historical File
Topographic Division
U. S. G. S.
FILE COPY
Inspection and Rating.

ROAD CLASSIFICATION
Heavy-duty... **4** LANE LANE Light-duty...
Medium-duty... **2** LANE LANE Unimproved dirt...
U. S. Route State Route

BERNICE, LA.
N3245-W9230/15

1951
SEP 26 1952
2070