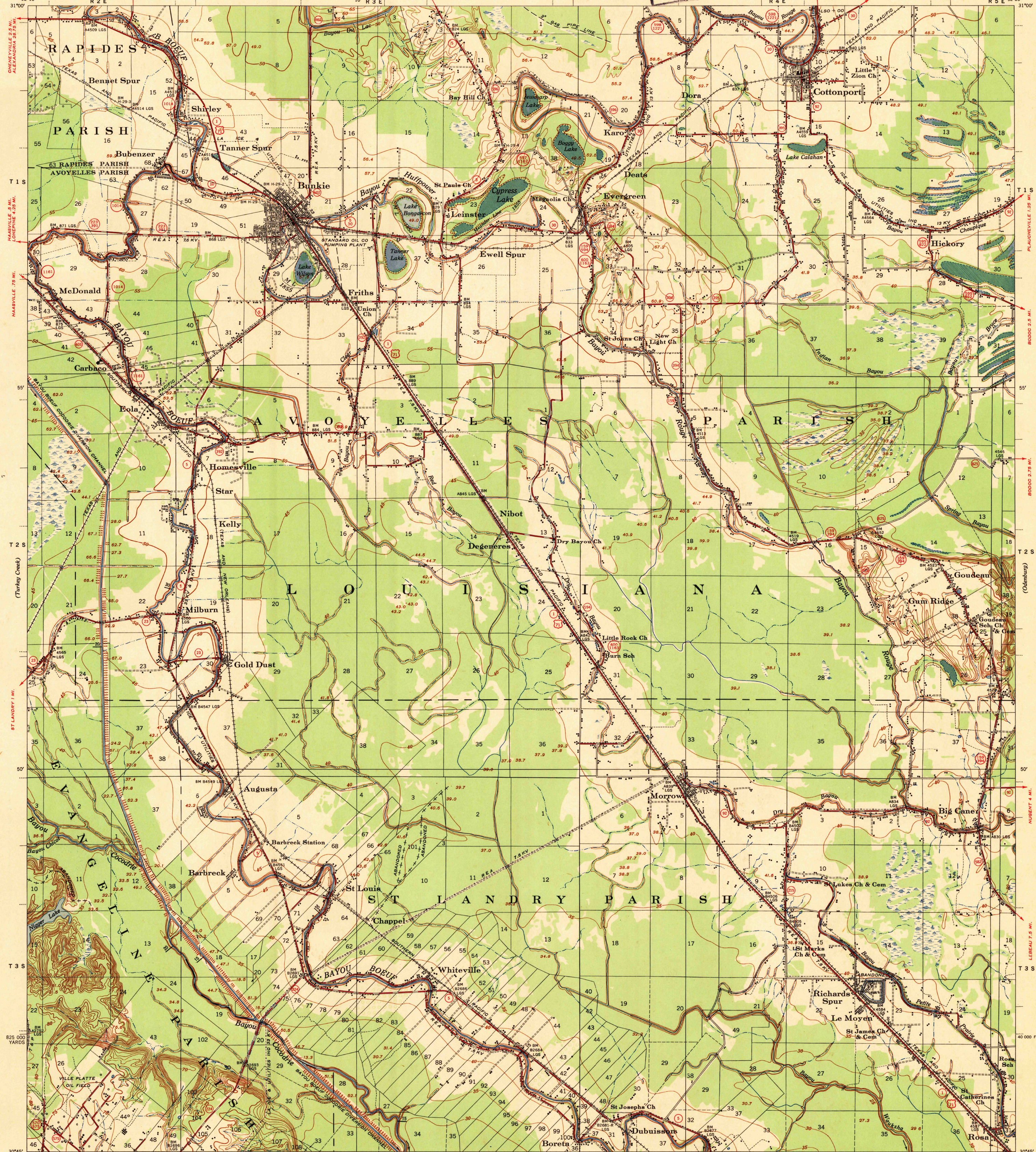
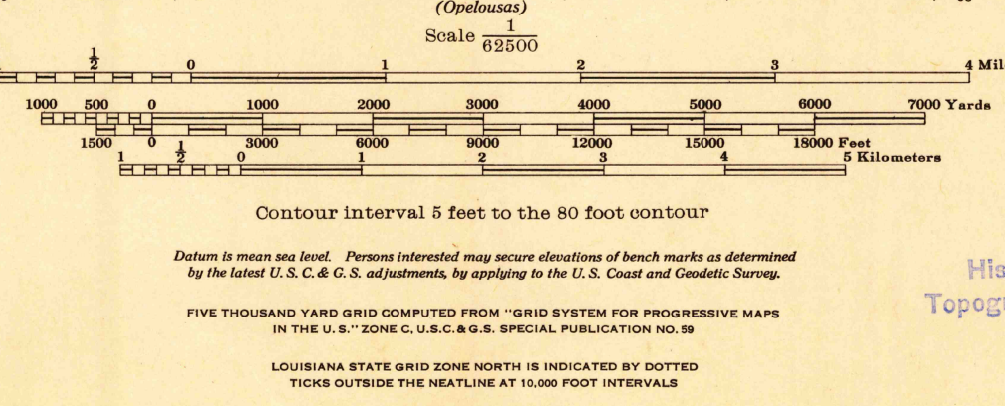


U.S.G.S.
FILE COPY
Inspection and Editing



Prepared under the direction of the President, Mississippi River Commission, Horizontal control by Corps of Engineers, U. S. Army, Vicksburg District, New Orleans District, U.S.C. & G.S., U.S.G.S., and Louisiana Geodetic Survey. Vertical control by Corps of Engineers, U. S. Army, Vicksburg District, New Orleans District, and Louisiana Geodetic Survey. Topography by Corps of Engineers, U. S. Army, New Orleans District, 1930-1931, 1940, 1948. Descriptions, elevations and geodetic positions of bench marks may be obtained from New Orleans District, New Orleans, La. Planimetry taken from aerial photographs flown by U. S. Air Force in April 1948, October 1948 and supplemented by information obtained from Federal and State agencies and private corporations. Revised by Mississippi River Commission, 1932-1935 and 1948. Dashed land lines are projected. Political boundaries are shown according to the best available information, and are subject to change except where established by court decision. Work under Flood Control Act as of December 1948. Polyconic Projection, 1927 North American Datum.



USCS
Historical File
Topographic Division

APPROXIMATE MEAN DECLINATION 1945
NO ANNUAL MAGNETIC CHANGE

LEGEND

Levee	Retards and dikes	Revetment	River gate	Levee mile post	Levee station	Towhead
*****	-----	-----	-----	LMP	Ls	TH

Distances on Bayou Boeuf, Bayou Cocodrie and along Bayou Boeuf-Cocodrie Diversion Channel are shown at five mile intervals above the confluence with Bayou Courtableau.

ROUTES USUALLY TRAVELED
HARD IMPERVIOUS SURFACES
OTHER SURFACE IMPROVEMENTS 1942

U. S. ROUTE STATE ROUTE

U.S.G.S.
FILE COPY
Inspection and Editing