

(ASHLAND)

UNITED STATES  
DEPARTMENT OF THE INTERIOR  
GEOLOGICAL SURVEY

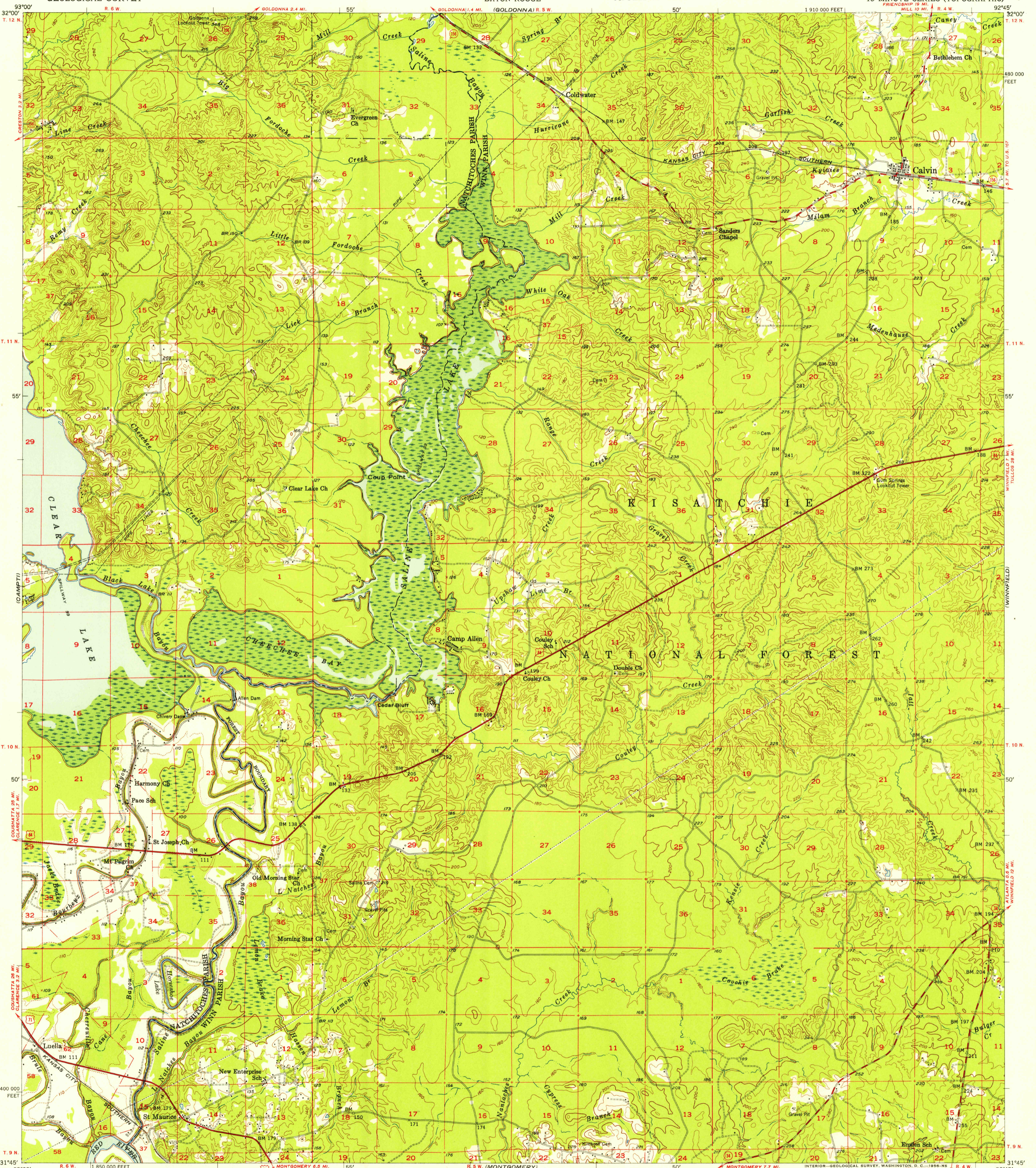
STATE OF LOUISIANA  
DEPARTMENT OF PUBLIC WORKS  
BATON ROUGE

U.S.G.S.  
FILE COPY  
TOPOGRAPHIC DIVISION

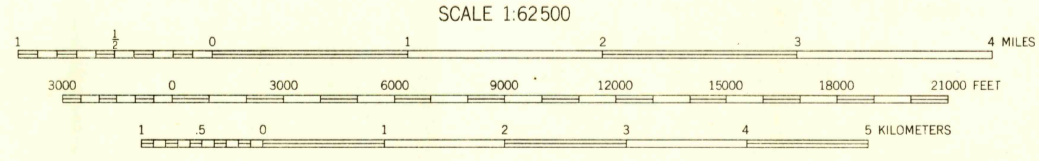
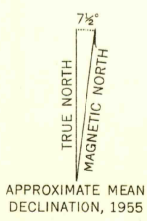
U.S.G.S.  
FILE COPY  
TOPOGRAPHIC DIVISION

CALVIN QUADRANGLE  
LOUISIANA  
15 MINUTE SERIES (TOPOGRAPHIC)

(WONESBORO)



Maped, edited, and published by the Geological Survey  
Control by USGS, USC&GS, and Louisiana Geodetic Survey  
Culture and drainage in part compiled from aerial photographs  
taken 1950. Topography by planetable surveys 1954-1955  
Polyconic projection. 1927 North American datum  
10,000-foot grid based on Louisiana coordinate system,  
north zone



CONTOUR INTERVAL 20 FEET  
DASHED LINES REPRESENT 10-FOOT CONTOURS  
DATUM IS MEAN SEA LEVEL

THIS MAP COMPLIES WITH NATIONAL MAP ACCURACY STANDARDS  
FOR SALE BY U. S. GEOLOGICAL SURVEY, FEDERAL CENTER, DENVER, COLORADO OR WASHINGTON 25, D. C.  
AND BY THE STATE OF LOUISIANA, DEPARTMENT OF PUBLIC WORKS, BATON ROUGE 4, LOUISIANA  
A FOLDER DESCRIBING TOPOGRAPHIC MAPS AND SYMBOLS IS AVAILABLE ON REQUEST

USGS  
Historical File  
Topographic Division

ROAD CLASSIFICATION  
Heavy-duty ——— Light-duty ———  
Medium-duty ——— Unimproved dirt - - - - -  
U. S. Route      State Route



U.S.G.S.  
FILE COPY  
TOPOGRAPHIC DIVISION

CALVIN, LA.  
N3145-W9245/15

1955 JUN 8 1955

2615