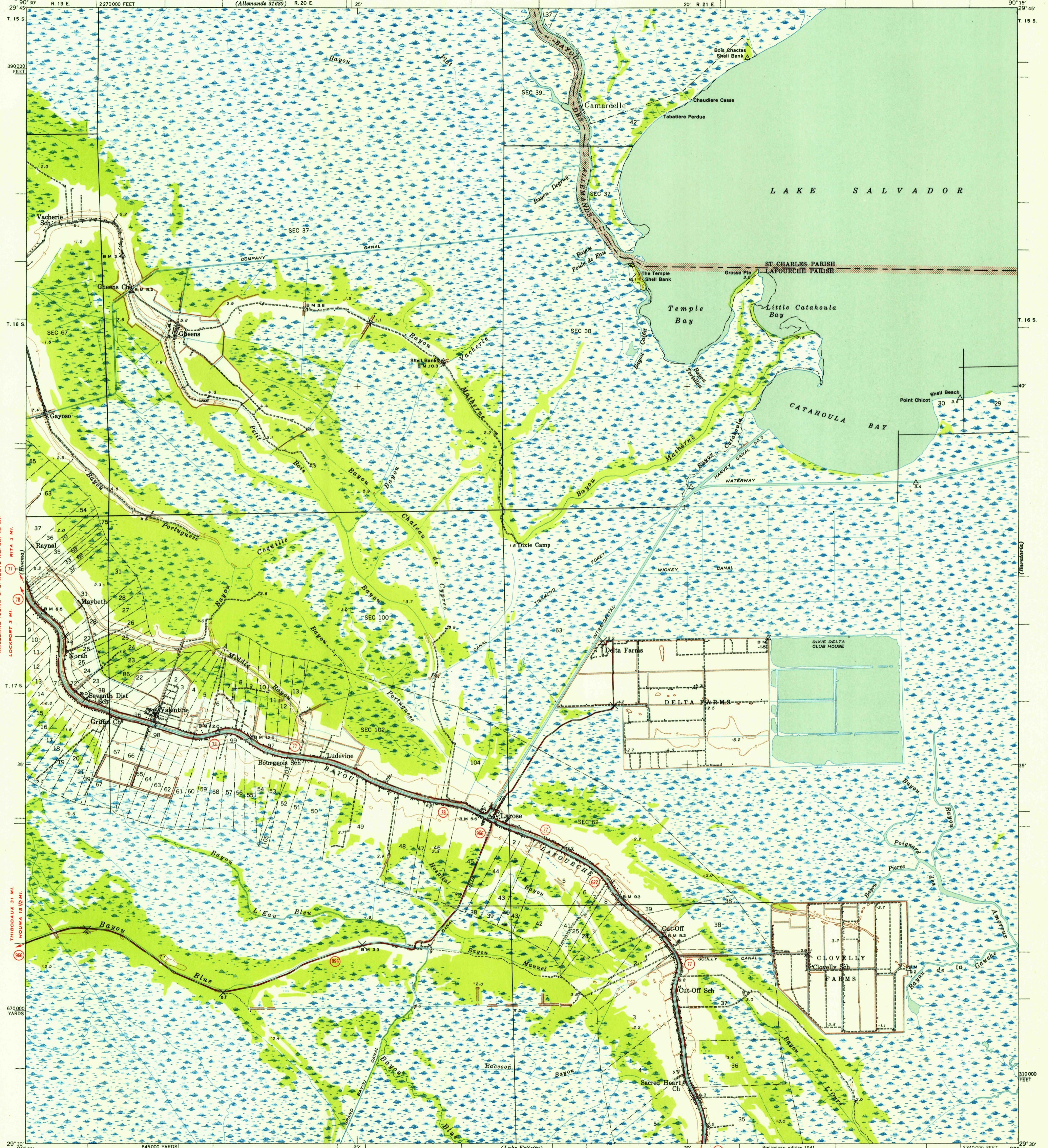
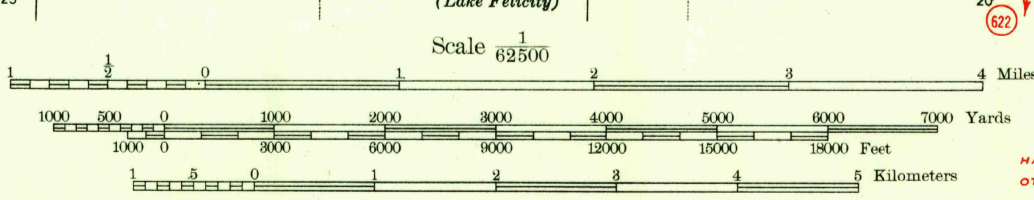
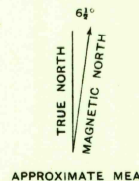


UNITED STATES
DEPARTMENT OF THE INTERIOR
GEOLOGICAL SURVEY

LOUISIANA
CUT-OFF QUADRANGLE



Topography by H. W. Toy, F. W. Weber, and L. E. Marsden
Surveyed in 1938-1939
Base compiled in cooperation with the State of Louisiana



Contour interval 5 feet
Datum is mean sea level

USGS
Historical File
Topographic Division

ROUTES USUALLY TRAVELED
HARD IMPERVIOUS SURFACES
OTHER SURFACE IMPROVEMENTS
1940
U. S. ROUTE
STATE ROUTE

Polyconic projection. 1927 North American datum
5000 yard grid based on U. S. zone system. C
10000 foot grid based on Louisiana (South)
rectangular coordinate system
Land lines added from General Land Office
records adjusted to natural features and control
CUT-OFF, LA.
N 2930-W 9015/15

MAY 8 1953

2085