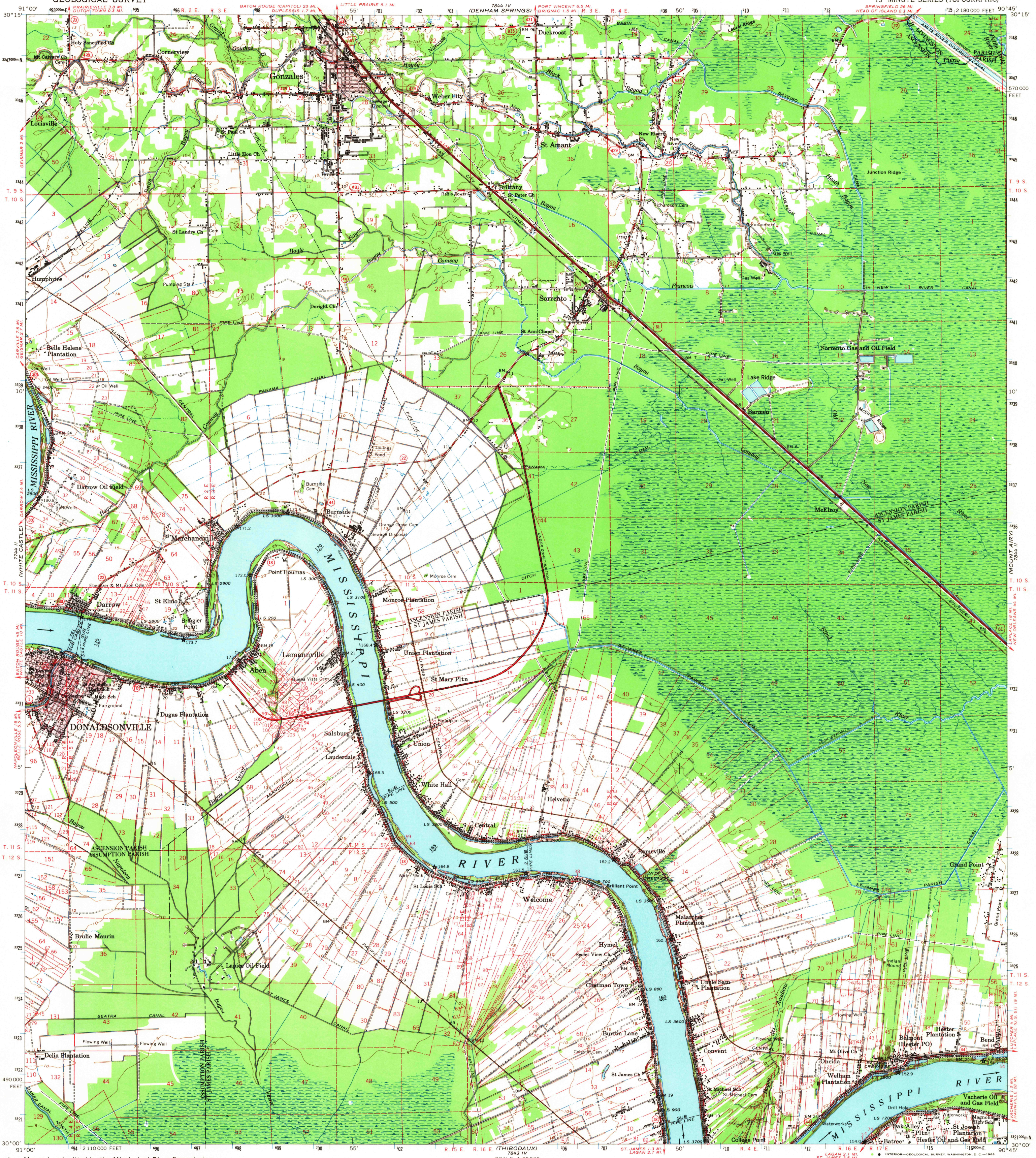
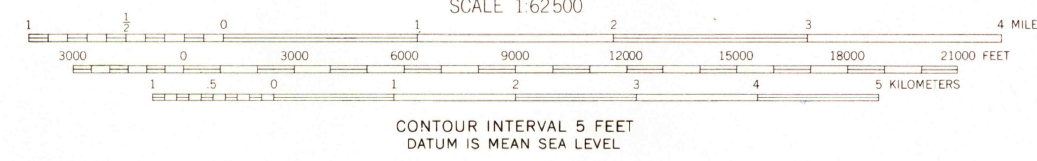
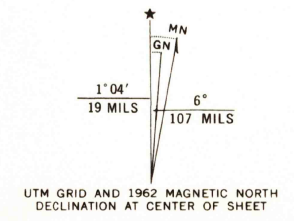


UNITED STATES
DEPARTMENT OF THE INTERIOR
GEOLOGICAL SURVEY

DONALDSONVILLE QUADRANGLE
LOUISIANA
15 MINUTE SERIES (TOPOGRAPHIC)



Mapped and edited by the Mississippi River Commission
Published by the Geological Survey
Control by USGS, USC&GS, USCE and Louisiana
Geodetic Survey
NE, SW, and SE quarters compiled in 1964
from 1:24,000-scale USGS maps dated
1962. NW quarter compiled in 1964 from
1:24,000-scale USGS map dated 1953, revised 1961
Polyconic projection. 1927 North American datum
10,000-foot grid based on Louisiana coordinate system,
south zone
1000-meter Universal Transverse Mercator grid ticks,
zone 15, shown in blue
Red tint indicates areas in which only landmark
buildings are shown
Distances on Mississippi River, above Head of Passes,
are shown at 5 mile intervals



SCALE 1:62,500
CONTOUR INTERVAL 5 FEET
DATUM IS MEAN SEA LEVEL



ROAD CLASSIFICATION
Heavy-duty ——— Light-duty ———
Medium-duty ——— Unimproved dirt ———
U.S. Route (circle with number)
State Route (circle with number)

This area covered by 7.5 minute, 1:24,000 scale maps:
Sorrento 1962, Gonzales 1961, Donaldsonville 1962,
and Convent 1962

DONALDSONVILLE, LA.
N3000—W9045/15

1962

AMS 7844 III—SERIES V785

THIS MAP COMPLIES WITH NATIONAL MAP ACCURACY STANDARDS
FOR SALE BY U.S. GEOLOGICAL SURVEY, DENVER, COLORADO 80225, OR WASHINGTON, D. C. 20242.
STATE OF LOUISIANA, DEPARTMENT OF PUBLIC WORKS, BATON ROUGE, LOUISIANA 70804,
AND MISSISSIPPI RIVER COMMISSION, VICKSBURG, MISSISSIPPI 39181
A FOLDER DESCRIBING TOPOGRAPHIC MAPS AND SYMBOLS IS AVAILABLE ON REQUEST