

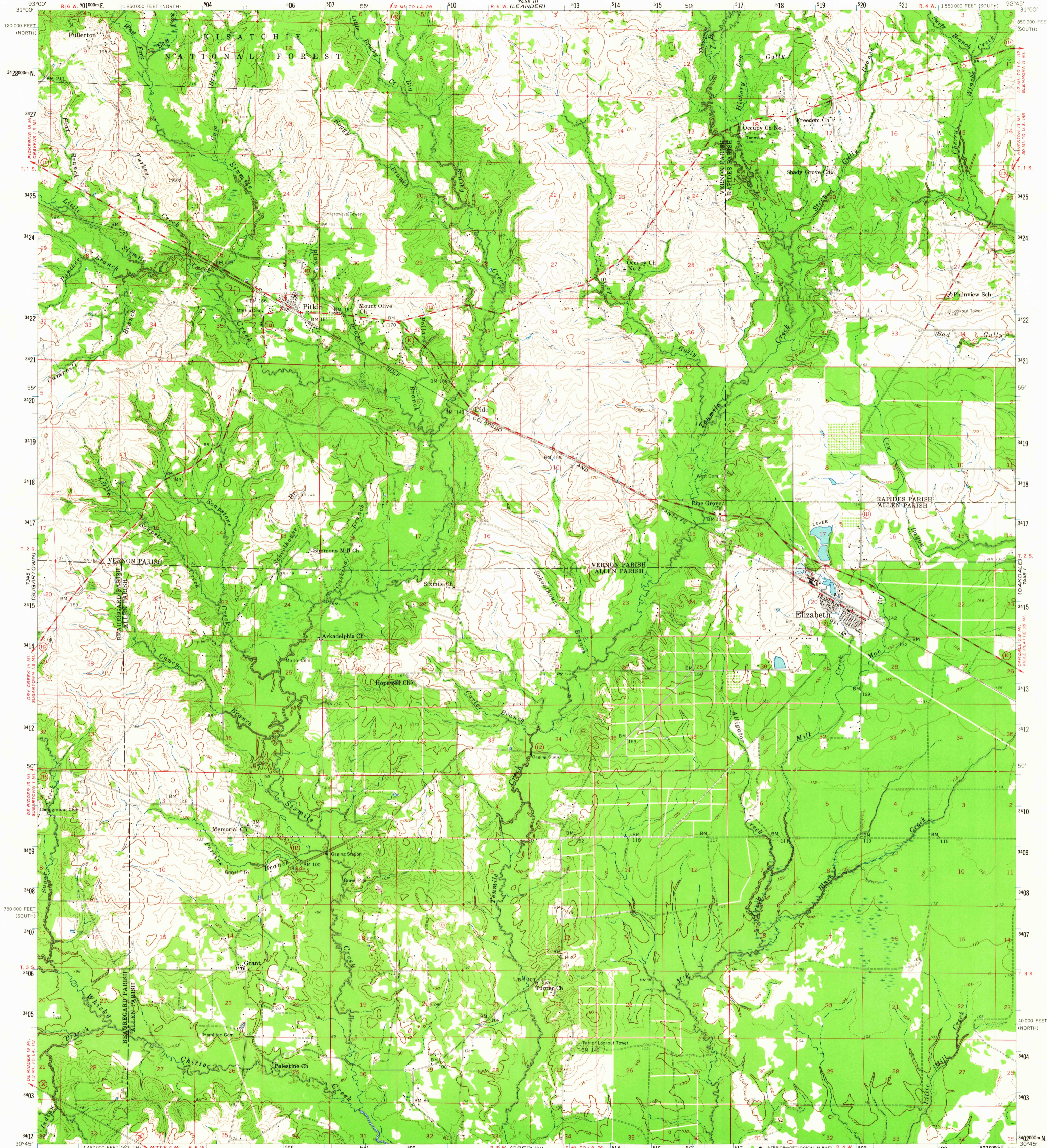
(SCALE)

UNITED STATES
DEPARTMENT OF THE INTERIOR
GEOLOGICAL SURVEY

STATE OF LOUISIANA
DEPARTMENT OF PUBLIC WORKS
BATON ROUGE

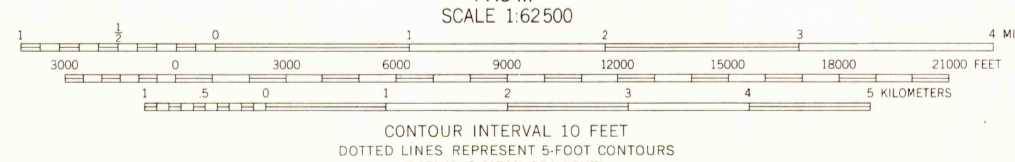
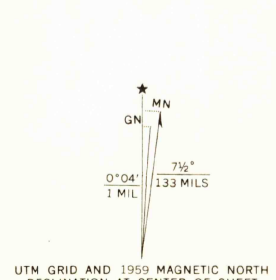
ELIZABETH QUADRANGLE
LOUISIANA
15 MINUTE SERIES (TOPOGRAPHIC)

(FOREST HILLS)



(LONGVILLE)

Mapped, edited, and published by the Geological Survey
Control by USGS, USCGS, and Louisiana Geodetic Survey
Compiled in 1959 from 1:24 000-scale maps of Steep Gully,
Pitkin, Grant, and Elizabeth 7.5 minute quadrangles,
surveyed 1945-1959
Culture and drainage in part compiled from aerial photographs
taken 1951. Topography by planetable surveys
Polyconic projection. 1927 North American datum
10,000-foot grids based on Louisiana coordinate system,
north and south zones
1000-meter Universal Transverse Mercator grid ticks,
zone 15, shown in blue



SCALE 1:62500
CONTOUR INTERVAL 10 FEET
DOTTED LINES REPRESENT 5-FOOT CONTOURS
DATUM IS MEAN SEA LEVEL
THIS MAP COMPLIES WITH NATIONAL MAP ACCURACY STANDARDS
FOR SALE BY U. S. GEOLOGICAL SURVEY, DENVER 25, COLORADO OR WASHINGTON 25, D. C.
AND BY THE STATE OF LOUISIANA, DEPARTMENT OF PUBLIC WORKS, BATON ROUGE 4, LOUISIANA
A FOLDER DESCRIBING TOPOGRAPHIC MAPS AND SYMBOLS IS AVAILABLE ON REQUEST

Historical File
Topographic Division



ROAD CLASSIFICATION
Medium-duty — Light-duty
Unimproved dirt — State Route

U.S.G.S. This area also covered by 1:24 000 scale maps of
Steep Gully, Pitkin, Grant, and Elizabeth
7.5 minute quadrangles, surveyed 1959
FILE COPY
TOPOGRAPHIC DIVISION
ELIZABETH, LA.
N 3045-W9245/15
1959
AMS 7445 IV-SERIES V785

MAR 17 1965

3090