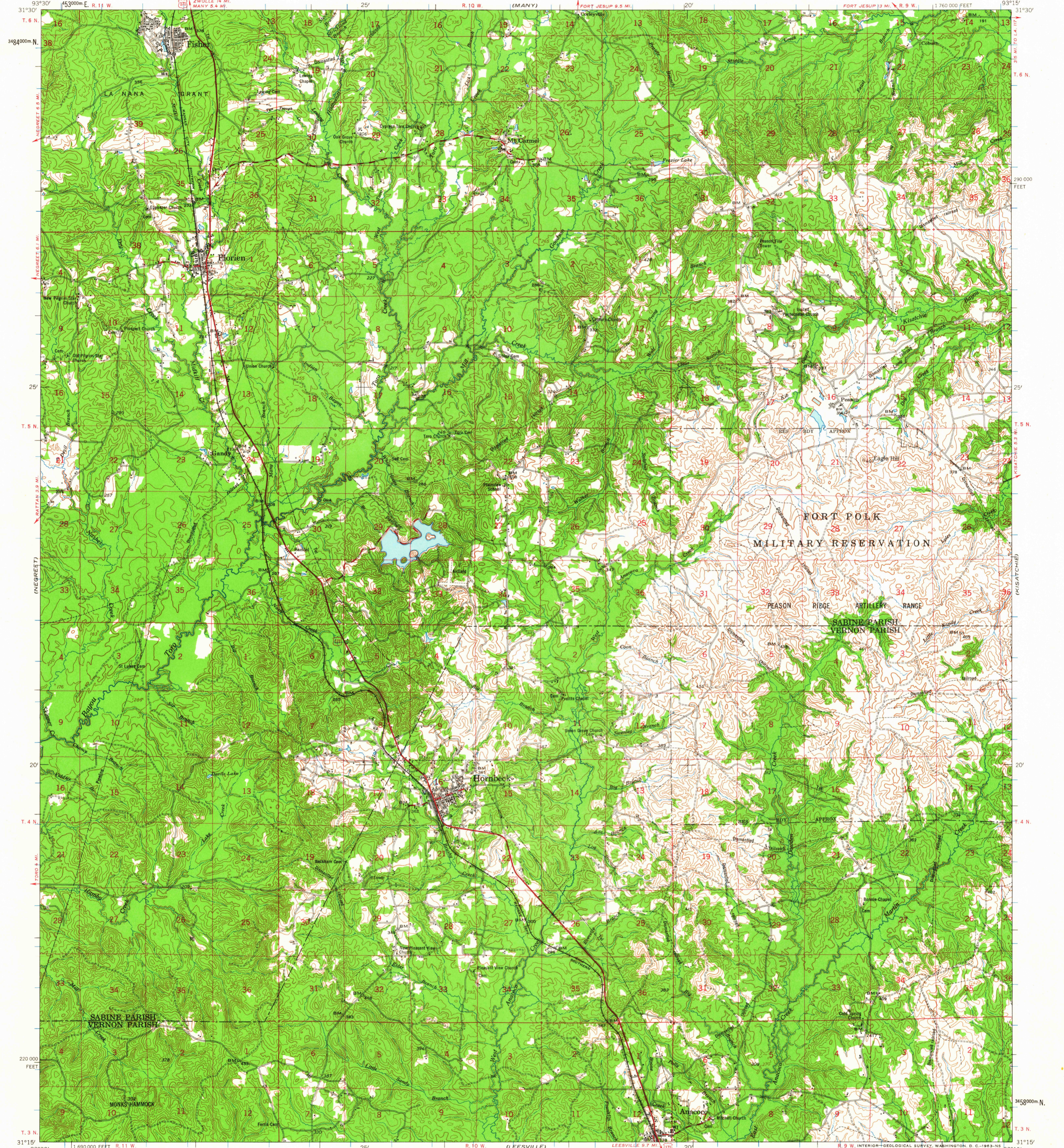


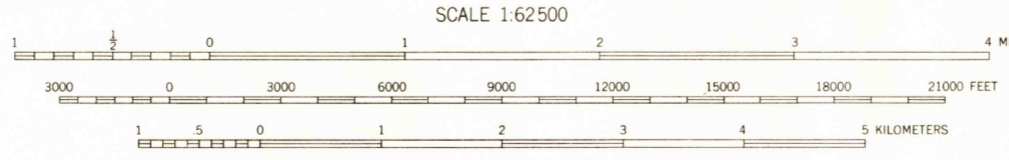
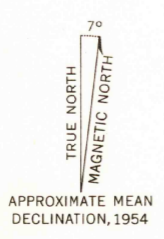
(ZWOLLE)

(PROVENCAL)



(WIEGATE)

Mapped by the Army Map Service
Published for civil use by the Geological Survey
Control by USGS, USC&GS, USCE, and Louisiana Geodetic Survey
Compiled in 1956 from 1:25 000 scale maps of Peason, Florien, Hornbeck, and Dowden Creek 7.5 minute quadrangles, surveyed 1954
Topography from aerial photographs by photogrammetric methods
Aerial photographs taken 1953-1954. Field check 1954
Polyconic projection, 1927 North American datum
10,000-foot grid based on Louisiana coordinate system, north zone
1000-meter Universal Transverse Mercator grid ticks, zone 15, shown in blue
Dashed land lines indicate approximate locations
Unchecked elevations are shown in brown



SCALE 1:62500
CONTOUR INTERVAL 20 FEET
DASHED LINES REPRESENT 10-FOOT CONTOURS
DATUM IS MEAN SEA LEVEL
THIS MAP COMPLIES WITH NATIONAL MAP ACCURACY STANDARDS
FOR SALE BY U.S. GEOLOGICAL SURVEY, DENVER 25, COLORADO OR WASHINGTON 25, D. C.
AND BY THE STATE OF LOUISIANA, DEPARTMENT OF PUBLIC WORKS, BATON ROUGE 4, LOUISIANA
A FOLDER DESCRIBING TOPOGRAPHIC MAPS AND SYMBOLS IS AVAILABLE ON REQUEST

ROAD CLASSIFICATION
Heavy-duty ——— Light-duty ———
Medium-duty ——— Unimproved dirt ———
U.S. Route

USGS
Historical File
Topographic Division

QUADRANGLE LOCATION

FLORIEN, LA.
N3115-W9315/15
1954

(SAGLE)

AUG 23 1966
2735