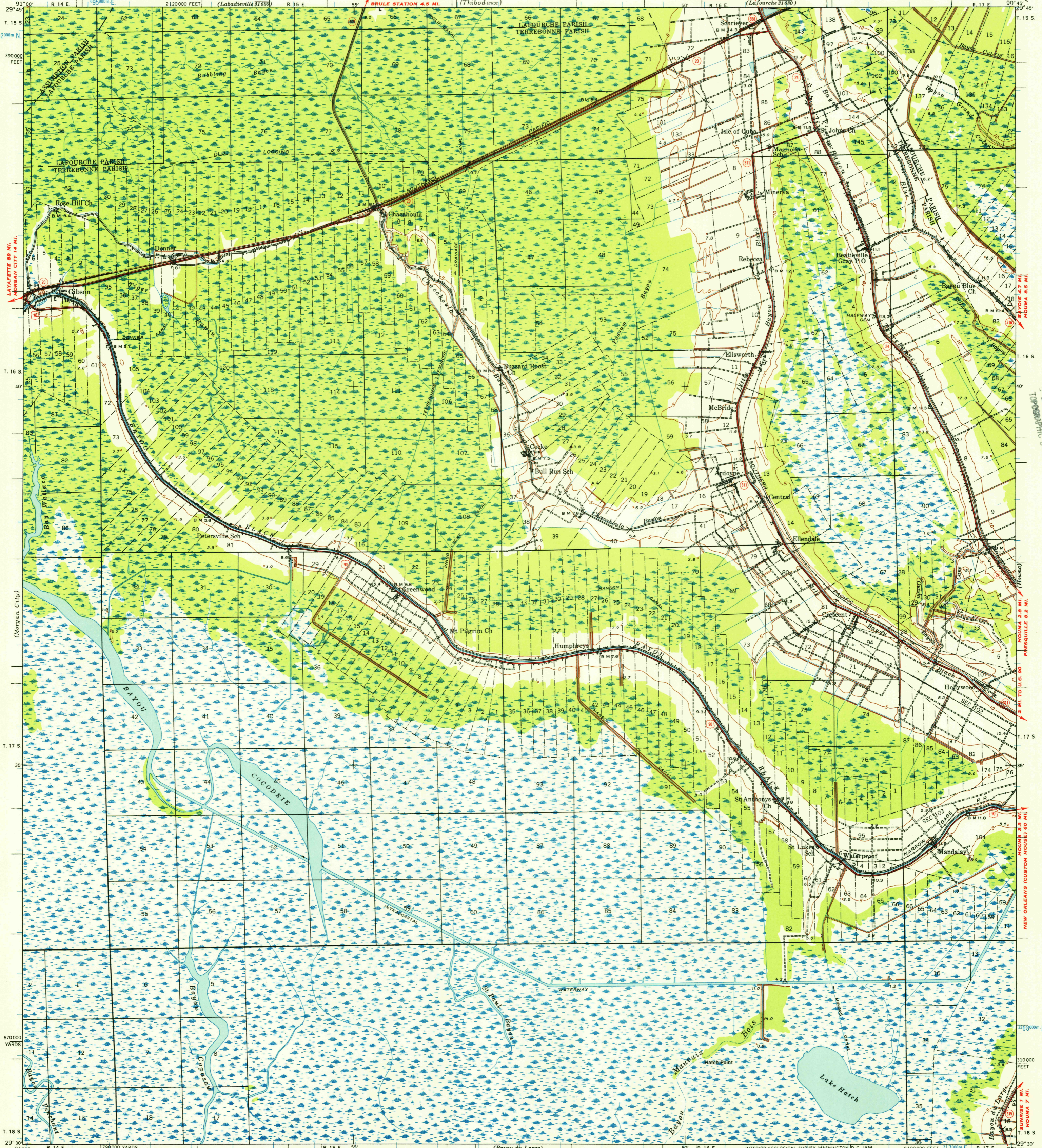


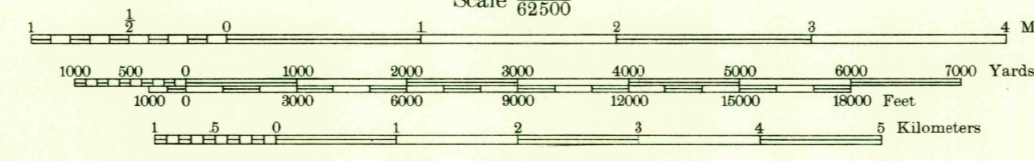
UNITED STATES
DEPARTMENT OF THE INTERIOR
GEOLOGICAL SURVEY

LOUISIANA
GIBSON QUADRANGLE



Topography by J. T. Schultz and L. E. Marsden
Surveyed in 1938-1939
Base compiled in cooperation with the State of Louisiana
1000-meter Universal Transverse Mercator grid ticks,
Zone 15, shown in blue

APPROXIMATE MEAN
DECLINATION, 1939



Contour interval 5 feet
Datum is mean sea level

Readjustment indicates that elevations on this map
should be decreased 0.1 foot

FOR SALE BY U. S. GEOLOGICAL SURVEY FEDERAL CENTER, DENVER, COLORADO OR WASHINGTON 25, D. C.
AND BY THE STATE OF LOUISIANA, DEPARTMENT OF PUBLIC WORKS, BATON ROUGE 4, LOUISIANA
A FOLDER DESCRIBING TOPOGRAPHIC MAPS AND SYMBOLS IS AVAILABLE ON REQUEST

U.S.G.S.
Historical File
Topographic Division

ROAD CLASSIFICATION
Heavy-duty ——— Light-duty ———
Medium-duty - - - - - Unimproved dirt =====
U.S. Route State Route

Polyconic projection. 1927 North American datum
5000 yard grid based on U. S. zone system, C
10 000 foot grid based on Louisiana (South)
rectangular coordinate system
Land lines added from General Land Office
records adjusted to natural features and control

GIBSON, LA.
N2930-W9045/15
1939

U.S.G.S.
FILE COPY
TOPOGRAPHIC DIVISION

DEC 12 1956
3185