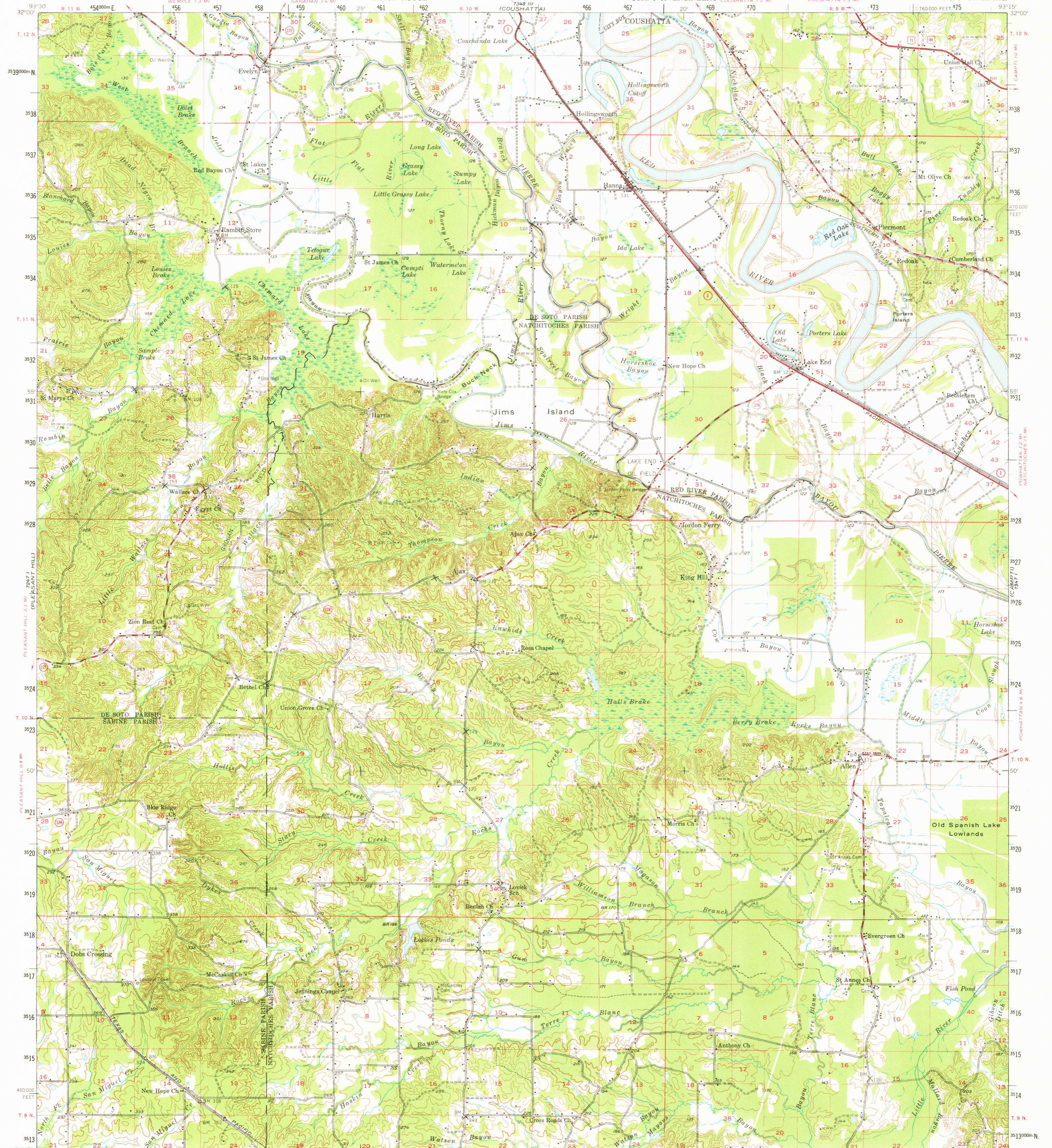


UNITED STATES  
DEPARTMENT OF THE INTERIOR  
GEOLOGICAL SURVEY

STATE OF LOUISIANA  
DEPARTMENT OF PUBLIC WORKS  
BATON ROUGE

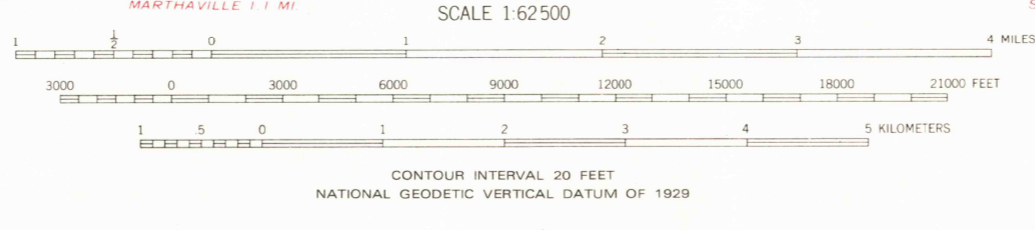
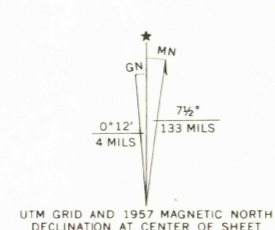
UNITED STATES  
DEPARTMENT OF THE ARMY  
CORPS OF ENGINEERS

HANNA QUADRANGLE  
LOUISIANA  
15 MINUTE SERIES (TOPOGRAPHIC)



Mapped, edited, and published by the Geological Survey  
Control by USGS, USC&GS, USCE, and Louisiana Geodetic Survey  
Topography by planetable surveys 1943-45. Culture and drainage revised from aerial photographs taken 1956. Field check 1957

Polynomic projection. 1927 North American datum  
10,000-foot grid based on Louisiana coordinate system, north zone  
100-meter Universal Transverse Mercator grid ticks, zone 15, shown in blue



ROAD CLASSIFICATION

Heavy duty	Light duty
Medium-duty	Unimproved dirt
U.S. Route	State Route



HANNA, LA.  
N3145-W9315/15  
1957

FOR SALE BY U.S. GEOLOGICAL SURVEY, DENVER, COLORADO 80225 OR RESTON, VIRGINIA 22092  
AND STATE OF LOUISIANA, DEPARTMENT OF PUBLIC WORKS, BATON ROUGE, LOUISIANA 70804  
A FOLDER DESCRIBING TOPOGRAPHIC MAPS AND SYMBOLS IS AVAILABLE ON REQUEST

DMA 7347 IV SERIES V785

USGS Library  
Reston, VA.  
Topo Archive