

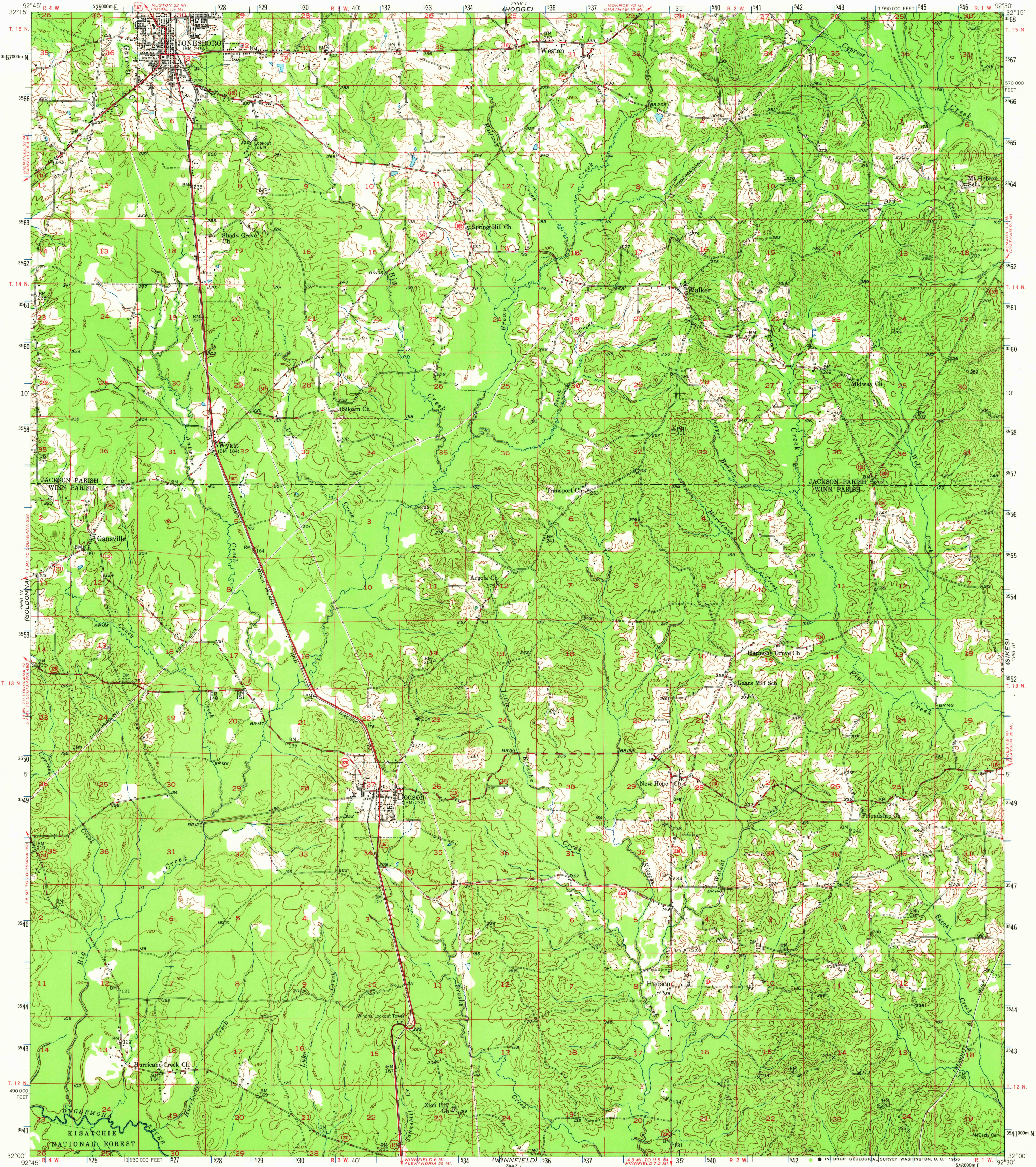
(GENEVILLE)  
7448 IV

(CHATAMI)  
7448 IV

UNITED STATES  
DEPARTMENT OF THE INTERIOR  
GEOLOGICAL SURVEY

STATE OF LOUISIANA  
DEPARTMENT OF PUBLIC WORKS  
BATON ROUGE

JONESBORO QUADRANGLE  
LOUISIANA  
15 MINUTE SERIES (TOPOGRAPHIC)



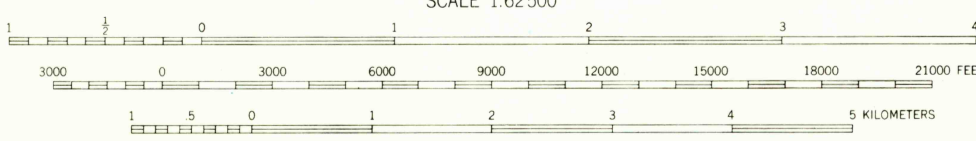
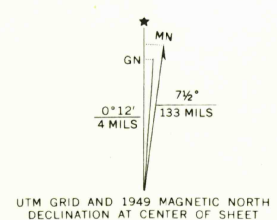
Mapped, edited, and published by the Geological Survey

Control by Louisiana Geodetic Survey  
USGS and USC&GS

Culture and drainage in part compiled from  
aerial photographs taken 1940  
Topography by plane-table methods 1948-1949

Polyconic projection. 1927 North American datum  
10,000-foot grid based on Louisiana coordinate system,  
north zone

1000-meter Universal Transverse Mercator grid ticks,  
zone 15, shown in blue



SCALE 1:62,500  
CONTOUR INTERVAL 20 FEET  
DATUM IS MEAN SEA LEVEL

USGS  
Historical File  
Topographic Division

ROAD CLASSIFICATION

- HARD-SURFACE ALL WEATHER ROADS
- DRY WEATHER ROADS
- Heavy-duty **LANE IS LANE** Improved dirt
- Medium-duty **LANE IS LANE** Unimproved dirt
- Loose-surface, graded, or narrow hard-surface
- U. S. Route
- Slate Route

U.S.G.S.  
FILE COPY  
TOPOGRAPHIC DIVISION

JONESBORO, LA.  
N3200-W9230/15  
1949  
AMS 7448 II-SERIES V785

THIS MAP COMPLIES WITH NATIONAL MAP ACCURACY STANDARDS  
FOR SALE BY U. S. GEOLOGICAL SURVEY, DENVER, COLORADO 80225 OR WASHINGTON, D. C. 20242  
AND BY THE STATE OF LOUISIANA, DEPARTMENT OF PUBLIC WORKS, BATON ROUGE, LOUISIANA  
A FOLDER DESCRIBING TOPOGRAPHIC MAPS AND SYMBOLS IS AVAILABLE ON REQUEST

2590  
MAR 11 1966