

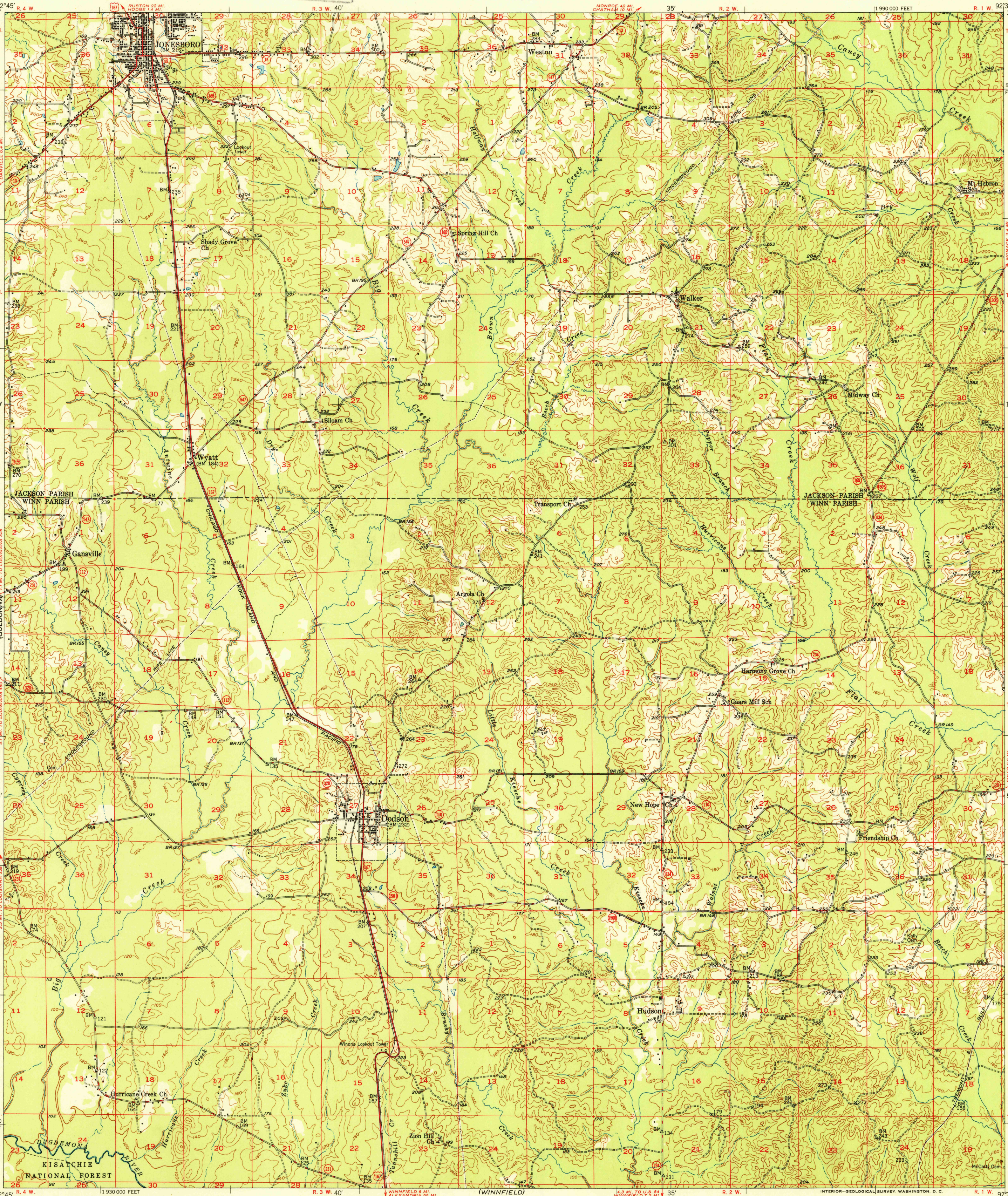
(GLENVILLE)
92°45' R. 4 W.
32°15' T. 15 N.
10'
5'
T. 13 N.
5'
T. 12 N.
490 000 FEET
32°00'
92°45' R. 4 W.
1 930 000 FEET
(CALVIN NE)
1:3 660

UNITED STATES
DEPARTMENT OF THE INTERIOR
GEOLOGICAL SURVEY

U. S. G. S.
FILE COPY
Inspection and Editing.

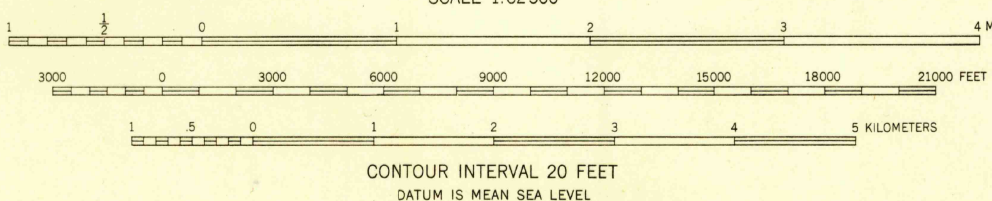
STATE OF LOUISIANA
DEPARTMENT OF PUBLIC WORKS
BATON ROUGE

JONESBORO QUADRANGLE
LOUISIANA
15 MINUTE SERIES (TOPOGRAPHIC)



Mapped, edited, and published by the Geological Survey
Control by Louisiana Geodetic Survey
USGS and USC&GS
Culture and drainage in part compiled from
aerial photographs taken 1940
Topography by plane-table methods 1948-1949
Polyconic projection. 1927 North American datum
10,000-foot grid based on Louisiana coordinate system,
north zone

7 1/4'
TRUE NORTH
MAGNETIC NORTH
APPROXIMATE MEAN
DECLINATION, 1949



USGS
Historical File
Topographic Division

U. S. G. S.
FILE COPY
Inspection and Editing.

ROAD CLASSIFICATION
HARD-SURFACE ALL WEATHER ROADS
Heavy-duty 1 LANE IS LANE
Medium-duty 1 LANE IS LANE
Loose-surface, graded, or narrow hard-surface
U. S. Route
DRY WEATHER ROADS
Improved dirt
Unimproved dirt
State Route

JONESBORO, LA.
N3200-W9230/15
EDITION OF 1950

THIS MAP COMPLIES WITH NATIONAL MAP ACCURACY STANDARDS
FOR SALE BY U. S. GEOLOGICAL SURVEY, FEDERAL CENTER, DENVER, COLORADO OR WASHINGTON 25, D. C.
AND BY THE DEPARTMENT OF PUBLIC WORKS, BATON ROUGE 4, LOUISIANA
A FOLDER DESCRIBING TOPOGRAPHIC MAPS AND SYMBOLS IS AVAILABLE ON REQUEST

NOV 24 1950 2120