

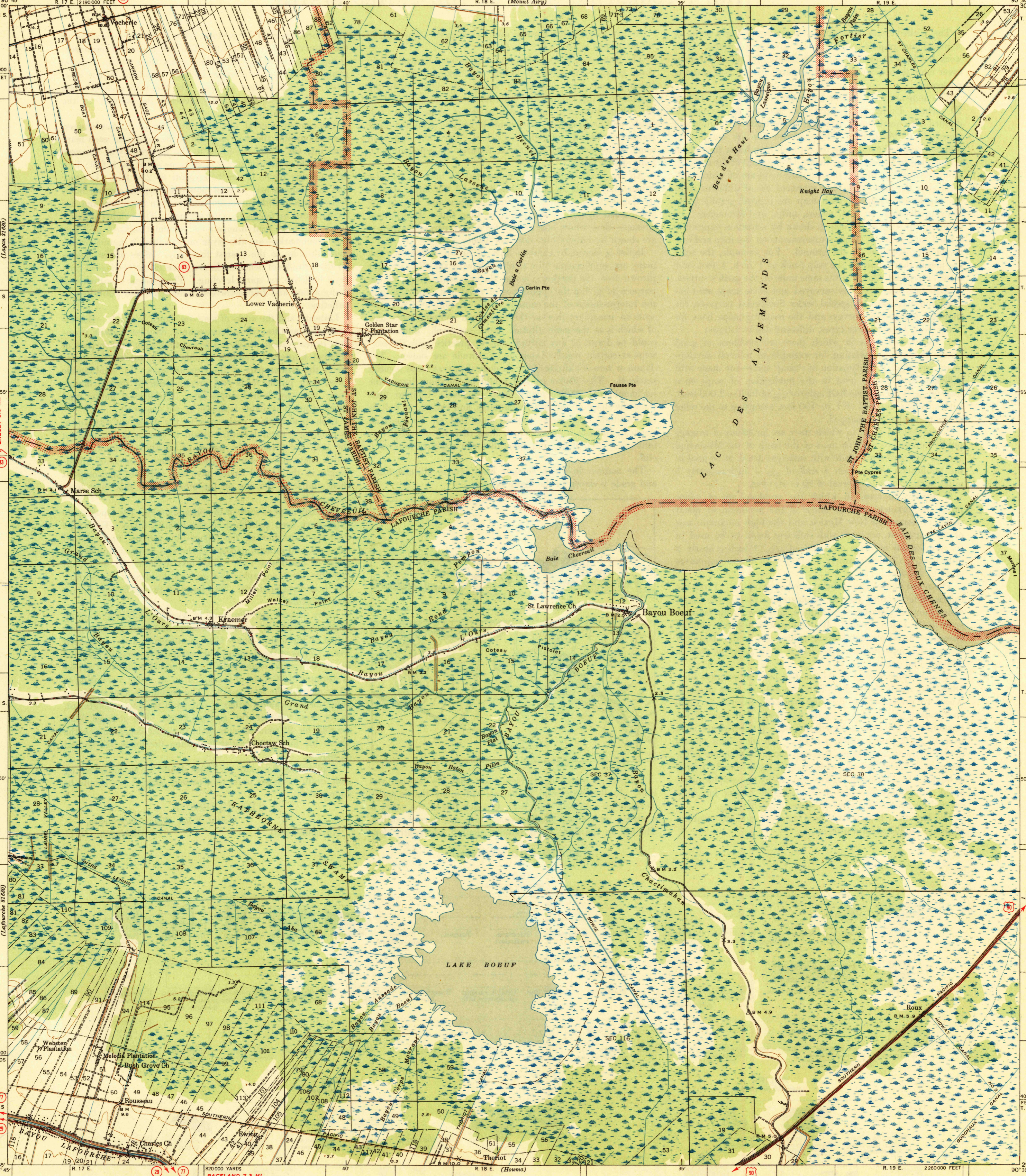
U.S.G.S.
FILE COPY
Imposition and Editing.

LOUISIANA
LAC DES ALLEMANDS QUADRANGLE
15-MINUTE SERIES

UNITED STATES
DEPARTMENT OF THE INTERIOR
GEOLOGICAL SURVEY

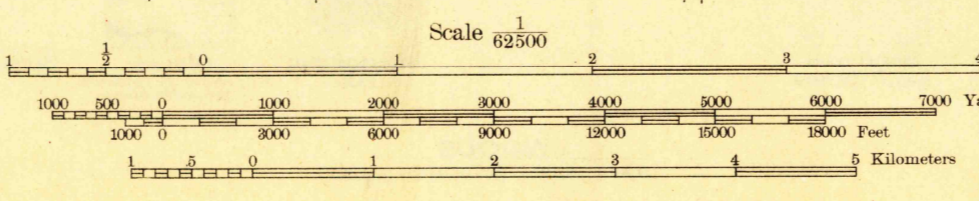
700000 YARDS
T. 15 S.
T. 14 S.
T. 13 S.
T. 12 S.
90° 45'
90° 30'
90° 15'
90° 00'

400000 FEET
T. 15 S.
T. 14 S.
T. 13 S.
T. 12 S.
90° 45'
90° 30'
90° 15'
90° 00'



Topography by W. F. Schlax, J. N. Calkins, and J. A. Wright
Surveyed in 1939
Base compiled in cooperation with the State of Louisiana

WALLACE 5.5 MI.
JUNC. STATE NO. 30 0.6 MI.
RACELAND 2.5 MI.
HOUMA 1.5 MI.
LAROSE 2.6 MI.



ROAD CLASSIFICATION
1944
Dependable hard surface
Loose surface, graded
Unsurfaced graded
Secondary hard surface
all weather road
Dirt road
More than two lanes indicated along road with tick at point of change

Polyconic projection. 1927 North American datum
5000 yard grid based on U. S. zone system, C
10000 foot grid based on Louisiana (South)
rectangular coordinate system
Land lines added from General Land Office
records adjusted to natural features and control

USGS
Historical File
Topographic Division

APPROXIMATE MEAN
DECLINATION, 1939

Contour interval 5 feet
Datum is mean sea level
Readjustment indicates that elevations on this map
should be decreased 0.1 foot

U.S.G.S.
Historical File
Topographic Division
FILE COPY
Imposition and Editing.

LAC DES ALLEMANDS, LA.
Edition of 1944
N2945-W9030/15

SEP 26 1944

4210