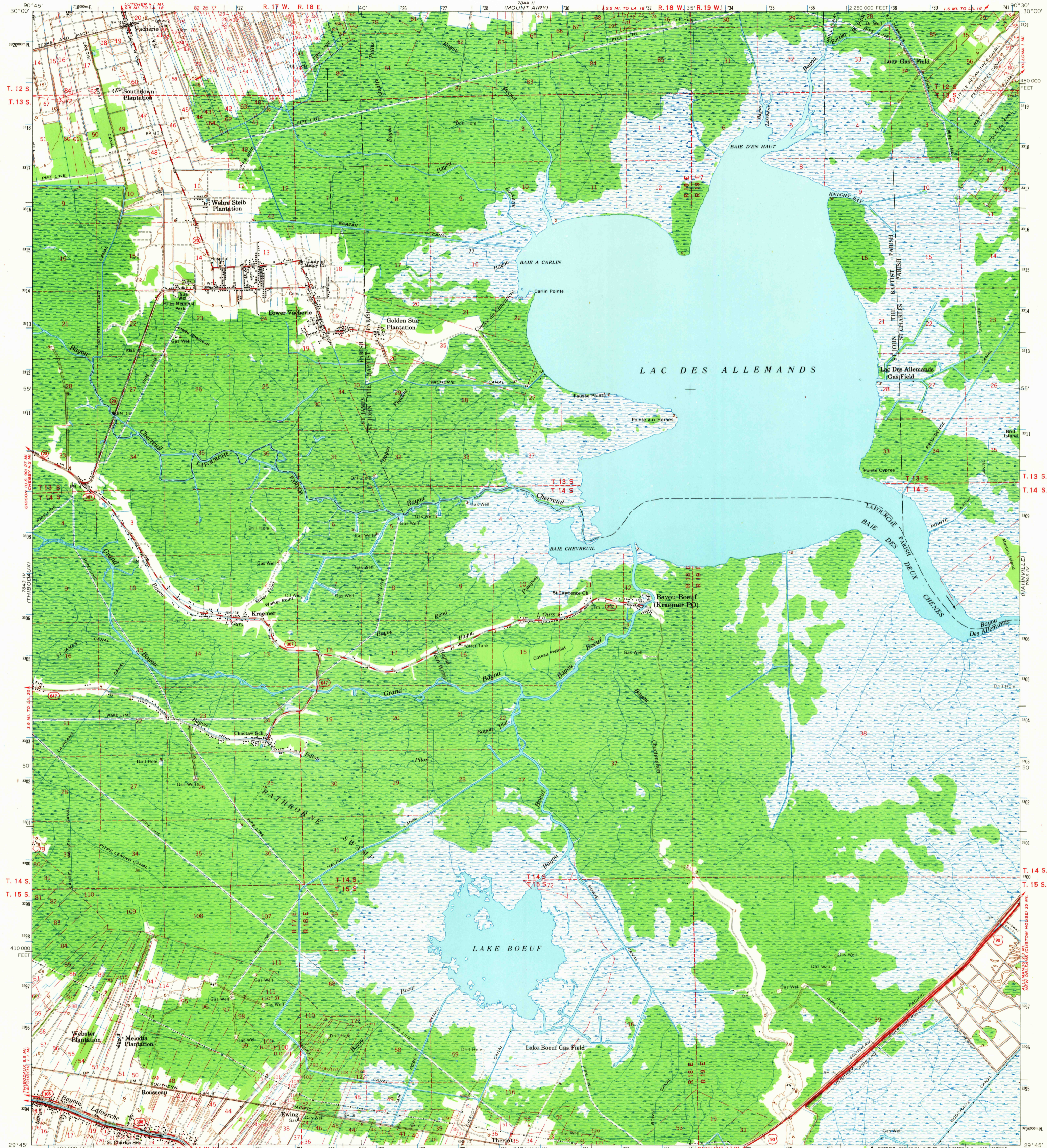


1000' (BOONVILLE)

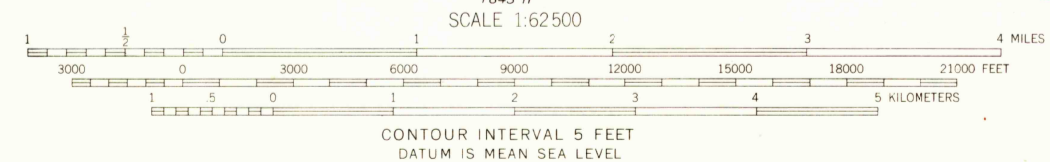
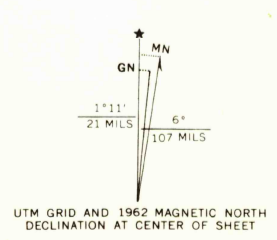
1000' (BOONVILLE)

UNITED STATES  
DEPARTMENT OF THE INTERIOR  
GEOLOGICAL SURVEY

LAC DES ALLEMANDS QUADRANGLE  
LOUISIANA  
15 MINUTE SERIES (TOPOGRAPHIC)



Mapped and edited by the Mississippi River Commission  
Published by the Geological Survey  
Control by USGS and USC&GS  
Compiled from 1:24 000-scale USGS maps dated 1962. Planimetry by photogrammetric methods from aerial photographs taken 1961, and planimetric surveys 1962.  
Polyconic projection. 1927 North American datum 10,000-foot grid based on Louisiana coordinate system, south zone  
1000-meter Universal Transverse Mercator grid ticks, zone 15, shown in blue



CONTOUR INTERVAL 5 FEET  
DATUM IS MEAN SEA LEVEL

THIS MAP COMPLIES WITH NATIONAL MAP ACCURACY STANDARDS  
FOR SALE BY U. S. GEOLOGICAL SURVEY, DENVER, COLORADO 80225, OR WASHINGTON, D. C. 20242.  
STATE OF LOUISIANA, DEPARTMENT OF PUBLIC WORKS, BATON ROUGE 4, LOUISIANA,  
AND MISSISSIPPI RIVER COMMISSION, VICKSBURG, MISSISSIPPI  
A FOLDER DESCRIBING TOPOGRAPHIC MAPS AND SYMBOLS IS AVAILABLE ON REQUEST

USGS  
Historical File  
Topographic Division



U.S.G.S.  
FILE COPY  
TOPOGRAPHIC DIVISION

ROAD CLASSIFICATION  
Heavy-duty ——— Light-duty ———  
Medium-duty ——— Unimproved dirt ———

U.S. Route ——— State Route ———  
This area also covered by 7.5-minute, 1:24 000-scale maps: Lac Des Allemands, Lower Vacherie, Kraemer, and Bayou Boeuf 1962  
Distances on Bayou Lafourche, above mouth, are shown at 5-mile intervals

LAC DES ALLEMANDS, LA.  
N2945—W930/15  
1962  
AMS 7843 I—SERIES V785

2255  
MAY 25 1968