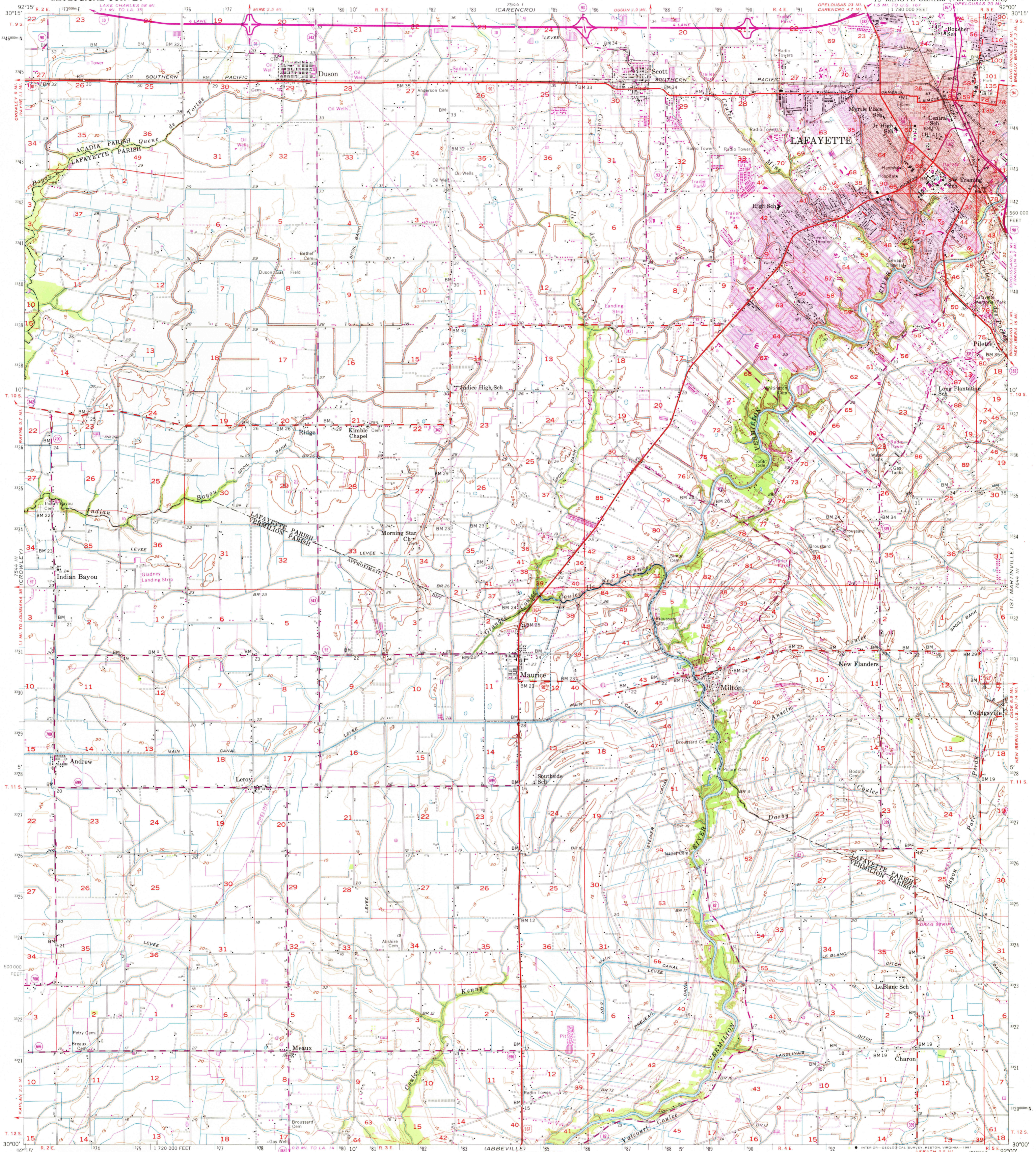


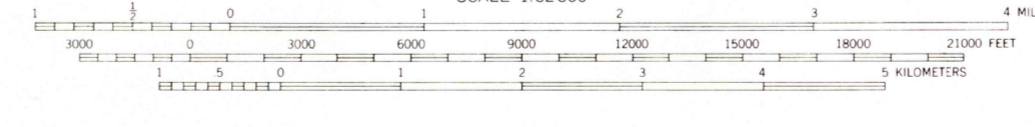
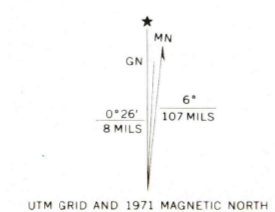
UNITED STATES  
DEPARTMENT OF THE INTERIOR  
GEOLOGICAL SURVEY

LAFAYETTE QUADRANGLE  
LOUISIANA

15 MINUTE SERIES (TOPOGRAPHIC)



Mapped, edited, and published by the Geological Survey  
Control by USGS, USC&GS, and Louisiana Geodetic Survey  
Culture and drainage in part compiled from aerial photographs  
taken 1951. Topography by planetable surveys 1954-1955  
Polyconic projection. 1927 North American datum  
10,000-foot grid based on Louisiana coordinate system,  
south zone  
Red tint indicates area in which only  
landmark buildings are shown  
1000-meter Universal Transverse Mercator grid ticks,  
zone 15, shown in blue  
Revisions shown in purple compiled in cooperation with  
Louisiana Department of Public Works from aerial photographs  
taken 1971. This information not field checked  
Purple tint indicates extension of urban areas



CONTOUR INTERVAL 5 FEET  
NATIONAL GEODETIC DATUM OF 1929

THIS MAP COMPLES WITH NATIONAL MAP ACCURACY STANDARDS  
FOR SALE BY U.S. GEOLOGICAL SURVEY, DENVER, COLORADO 80225, OF RESTON, VIRGINIA 22092  
AND STATE OF LOUISIANA, DEPARTMENT OF PUBLIC WORKS, BATON ROUGE, LOUISIANA 70804  
A FOLDER DESCRIBING TOPOGRAPHIC MAPS AND SYMBOLS IS AVAILABLE ON REQUEST

ROAD CLASSIFICATION

Heavy-duty	Light-duty
Medium-duty	Unimproved dirt
U.S. Route	State Route
Interstate Route	

QUADRANGLE LOCATION

LAFAYETTE, LA.  
N3000-W9200/15  
1955  
PHOTOREVISED 1971  
DMA 7544 II-SERIES V785

USGS  
HISTORICAL FILE  
NATIONAL MAPPING DIVISION

2450  
JUL 7 1981