

Mapped, edited, and published by the Geological Survey

Control by USGS, USCGS, and Louisiana Geodetic Survey
Culture and drainage in part compiled from aerial photographs
taken 1951. Topography by planetable surveys 1954-1955

Polyconic projection. 1927 North American datum
10,000-foot grid based on Louisiana coordinate system,
south zone

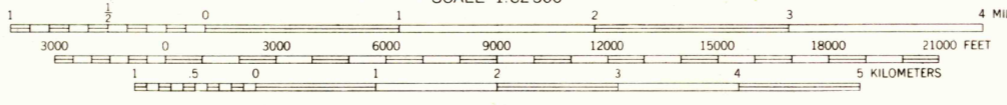
Red tint indicates area in which only
landmark buildings are shown

1000-meter Universal Transverse Mercator grid ticks,
zone 15, shown in blue

Revisions shown in purple compiled in cooperation with
Louisiana Department of Public Works from aerial photographs
taken 1971. This information not field checked

Purple tint indicates extension of urban areas

UTM GRID AND 1971 MAGNETIC NORTH
DECLINATION AT CENTER OF SHEET



CONTOUR INTERVAL 5 FEET
DATUM IS MEAN SEA LEVEL

THIS MAP COMPLIES WITH NATIONAL MAP ACCURACY STANDARDS
FOR SALE BY U. S. GEOLOGICAL SURVEY, DENVER, COLORADO 80225, OR WASHINGTON, D. C. 20242
AND BY THE STATE OF LOUISIANA, DEPARTMENT OF PUBLIC WORKS, BATON ROUGE, LOUISIANA 70804
A FOLDER DESCRIBING TOPOGRAPHIC MAPS AND SYMBOLS IS AVAILABLE ON REQUEST



QUADRANGLE LOCATION

ROAD CLASSIFICATION
Heavy-duty ——— Light-duty ———
Medium-duty ——— Unimproved dirt ———
U. S. Route ——— State Route ———
Interstate Route ———

USGS
HISTORICAL FILE
TOPOGRAPHIC DIVISION

LAFAYETTE, LA.

N3000-W9200/15

1955

PHOTOREVISED 1971
AMS 7544 II-SERIES V785