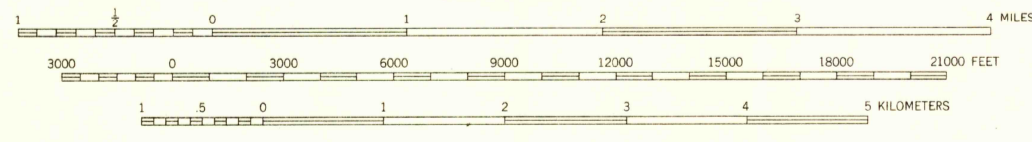


U.S.G.S.  
FILE COPY  
TOPOGRAPHIC DIVISION

Mapped, edited, and published by the Geological Survey  
Control by USGS, USCGS, and Louisiana Geodetic Survey  
Culture and drainage in part compiled from aerial photographs  
taken 1951. Topography by planetable surveys 1940. Revised 1955  
Hydrography from US&GS chart 592 (1:40,000)  
Polyconic projection. 1927 North American datum  
10,000-foot grid based on Louisiana coordinate system,  
south zone  
Red tint indicates areas in which only  
landmark buildings are shown  
Dashed land lines indicate approximate locations  
Certain land lines unsurveyed in T. 12 S.-R. 6 W. and T. 12 S.-R. 8 W.

7 1/4°  
TRUE NORTH  
MAGNETIC NORTH



CONTOUR INTERVAL 5 FEET  
DATUM IS MEAN SEA LEVEL  
DEPTH CURVES AND SOUNDINGS IN FEET-DATUM IS MEAN LOW WATER

THIS MAP COMPLIES WITH NATIONAL MAP ACCURACY STANDARDS  
FOR SALE BY U. S. GEOLOGICAL SURVEY, FEDERAL CENTER, DENVER, COLORADO OR WASHINGTON 25, D. C.  
AND BY THE STATE OF LOUISIANA, DEPARTMENT OF PUBLIC WORKS, BATON ROUGE 4, LOUISIANA  
A FOLDER DESCRIBING TOPOGRAPHIC MAPS AND SYMBOLS IS AVAILABLE ON REQUEST

USGS  
Historical File  
Topographic Division

ROAD CLASSIFICATION  
Heavy-duty ——— Light-duty ———  
Medium-duty - - - - - Unimproved dirt - - - - -  
U. S. Route ——— State Route ———



U.S.G.S.  
FILE COPY  
TOPOGRAPHIC DIVISION

LAKE CHARLES, LA.  
N3000-W9300/15  
1955

SEP 26 1956

4255