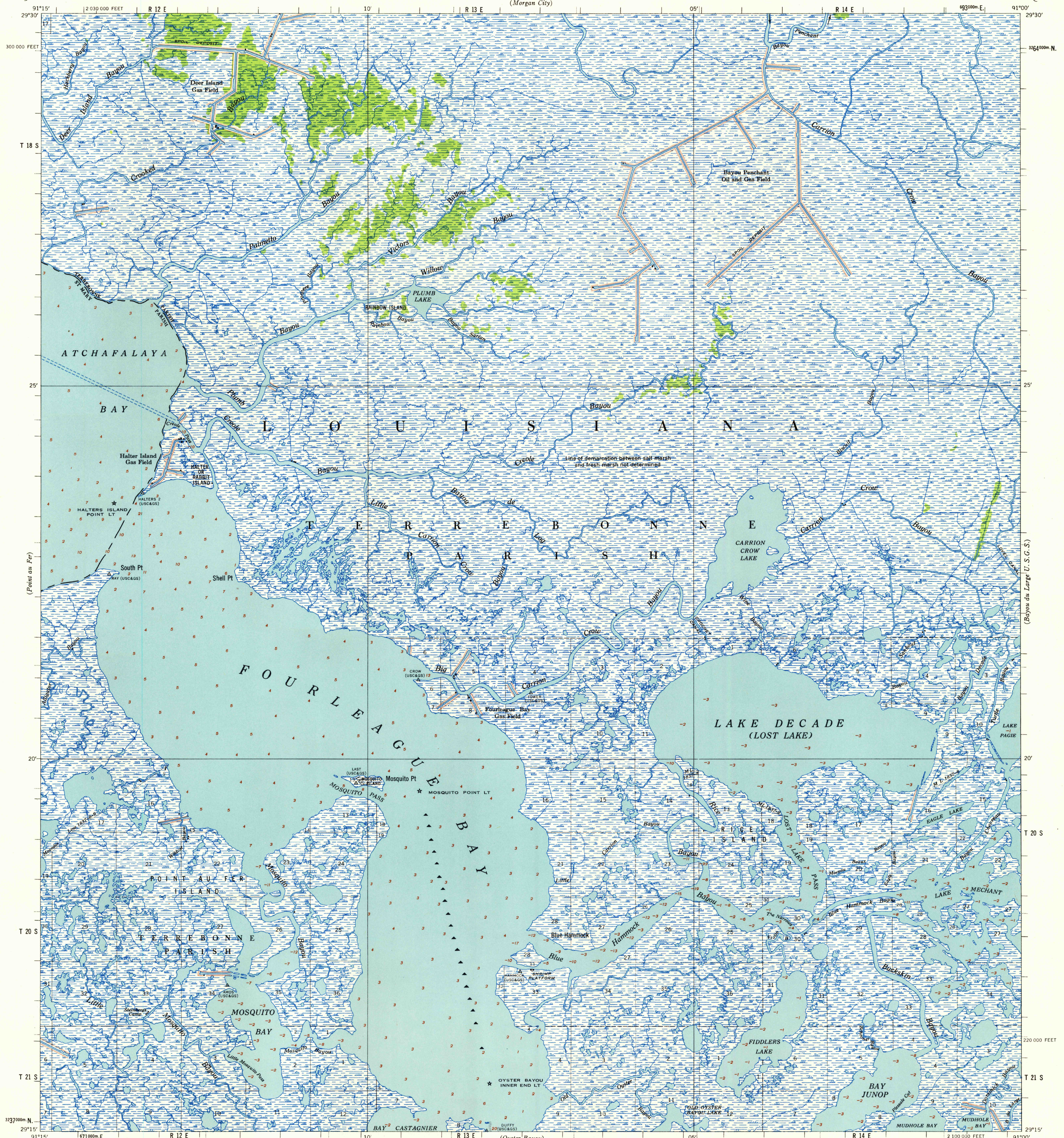


(Field 146)

U. S. ARMY
CORPS OF ENGINEERS

LAKE DECADE QUADRANGLE
LOUISIANA

(Given U. S. G. S.)



Prepared under the direction of the President, Mississippi River Commission, by U. S. Army Engineer District, New Orleans, Corps of Engineers.

Edited and published by Mississippi River Commission, Corps of Engineers, U. S. Army, Vicksburg, Mississippi.

Control by Mississippi River Commission and U. S. Army Engineer District, New Orleans, Corps of Engineers, New Orleans, La., and U. S. Coast and Geodetic Survey.

Polyconic Projection, 1927 North American Datum.

Descriptions, elevations and geodetic positions of permanent survey marks may be obtained from U. S. Army Engineer District, New Orleans, Corps of Engineers, New Orleans, Louisiana.

Topography by U. S. Army Engineer District, New Orleans, Corps of Engineers, 1930-31.

Planimetry remapped from aerial photographs by stereo methods.

Aerial photography June 1955.

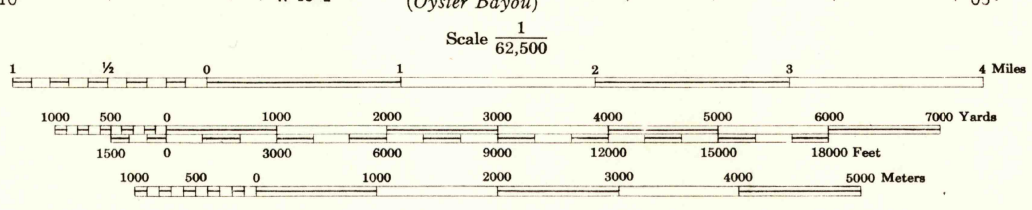
Depths in Atchafalaya Bay and Fourleague Bay from U. S. Coast and Geodetic Charts Nos. 1275 and 1276, expressed in feet below mean low water.

Elevations in Lost Lake, Lake Mechant, Bay Junop, Fiddlers Lake, Bay Castagnier, Mosquito Bay and various streams taken from U. S. Coast and Geodetic Charts Nos. 1050, 1275, and 1276, expressed in feet mean sea level.

Dashed land lines are projected.

Political boundaries are shown according to best available information.

Work under Flood Control Act as of October 1956.



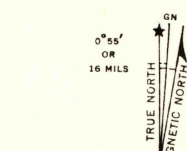
Maximum elevation is less than 5 feet

DATUM IS MEAN SEA LEVEL

ONE THOUSAND METER UNIVERSAL TRANSVERSE MERCATOR GRID.
ZONE 15 IS INDICATED BY TICKS OUTSIDE OF THE NEATLINE

LOUISIANA STATE GRID ZONE SOUTH IS INDICATED BY DOTTED TICKS OUTSIDE OF THE NEATLINE AT 10,000 FOOT INTERVALS

Additional copies may be procured from
The President, Mississippi River Commission
Corps of Engineers, U. S. Army,
Vicksburg, Miss. 30 cents per copy



APPROXIMATE MEAN DECLINATION 1955
FOR CENTER OF SHEET
ANNUAL MAGNETIC CHANGE 2' WESTERLY

LEGEND

Levee	Retards and dikes	Revetment	Levee station	Towhead	River Gage
-------	-------------------	-----------	---------------	---------	------------

LAKE DECADE, LOUISIANA
EDITION OF 1957
N2915-W100 15

(Grand Bayou de Large U. S. G. S.)