



LEESVILLE (JUNC. U. S. ROUTE NO. 17) 17.5 MI.

ALEXANDRIA (CIVIC CENTER) 24 MI.

FOREST HILL 16 MI.

UNION HILL 6.5 MI.
OAKDALE (JUNC. U. S. ROUTE NO. 162) 25 MI.

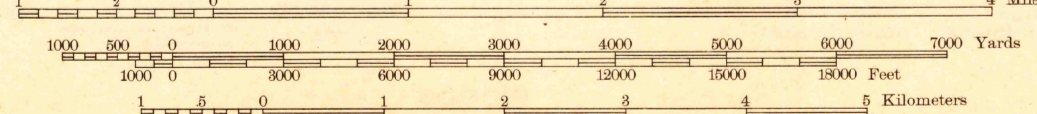
Topography by C. E. Walker, C. C. Juhre,
P. L. Sampson, A. W. Thomas, J. V. Desvaux,
and Alfredo Terrazas (47)
Surveyed in 1941-42

CRAVENS 4 MI.
DE RIDDER 25 MI.

PITKIN 4.5 MI.
OAKDALE 23 MI.

APPROXIMATE MEAN
DECLINATION, 1942

Scale 1:62,500



Contour interval 20 feet
Datum is mean sea level

ROUTES USUALLY TRAVELED
HARD IMPERVIOUS SURFACES
OTHER SURFACE IMPROVEMENTS
U. S. ROUTE 1943 STATE ROUTE

Polyconic projection. 1927 North American datum
5000 yard grid based on U. S. zone system, C
10000 foot grid based on Louisiana (North)
rectangular coordinate system

USGS
Historical Files
Topographic Division

LEANDER, LA.
Edition of 1943
N3100-W9245/15

2175