

(WIERGATE)

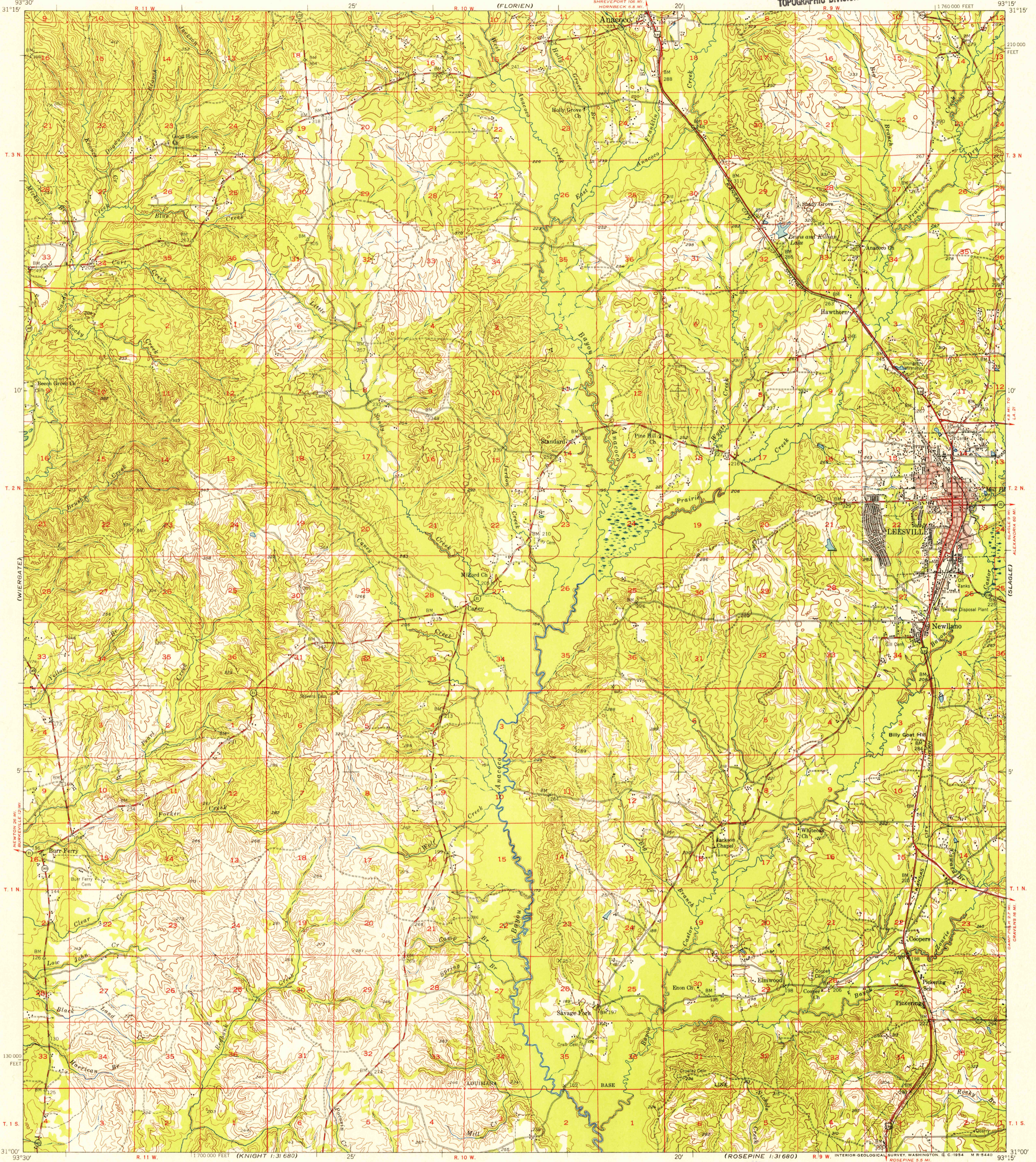
UNITED STATES  
DEPARTMENT OF THE INTERIOR  
GEOLOGICAL SURVEY

UNITED STATES  
DEPARTMENT OF THE ARMY  
CORPS OF ENGINEERS

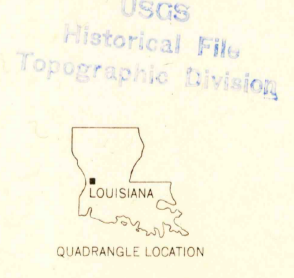
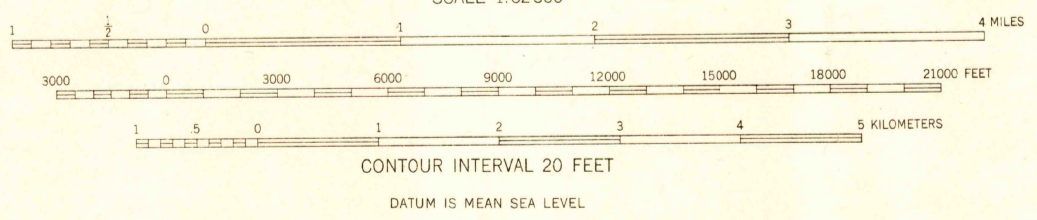
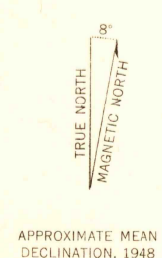
U.S.G.S.  
FILE COPY  
TOPOGRAPHIC DIVISION

LEESVILLE QUADRANGLE  
LOUISIANA—VERNON PARISH  
15 MINUTE SERIES (TOPOGRAPHIC)

(KISATCHIE)



Mapped by the Geological Survey  
Revised by the Army Map Service  
Edited and published for civil use by the Geological Survey  
Control by USGS and USC&GS  
Topography by plane-table surveys, 1941-1942  
Planimetric detail revised from aerial photographs  
taken 1947. Field check 1948  
Polyconic projection. 1927 North American datum  
10,000-foot grid based on Louisiana coordinate system,  
north zone  
Red tint indicates area in which only  
landmark buildings are shown  
No distinction is made between dwellings, barns,  
commercial and industrial buildings



ROAD CLASSIFICATION

Heavy-duty	4 LANE 6 LANE	Light-duty
Medium-duty	4 LANE 6 LANE	Unimproved dirt
U.S. Route		State Route

THIS MAP COMPLIES WITH NATIONAL MAP ACCURACY STANDARDS  
FOR SALE BY U.S. GEOLOGICAL SURVEY, FEDERAL CENTER, DENVER, COLORADO OR WASHINGTON 25, D. C.  
AND BY THE STATE OF LOUISIANA, DEPARTMENT OF PUBLIC WORKS, BATON ROUGE 4, LOUISIANA  
A FOLDER DESCRIBING TOPOGRAPHIC MAPS AND SYMBOLS IS AVAILABLE ON REQUEST

U.S.G.S.  
FILE COPY  
TOPOGRAPHIC DIVISION

LEESVILLE, LA.  
N3100-W9315/15  
1948

JAN 4 1955