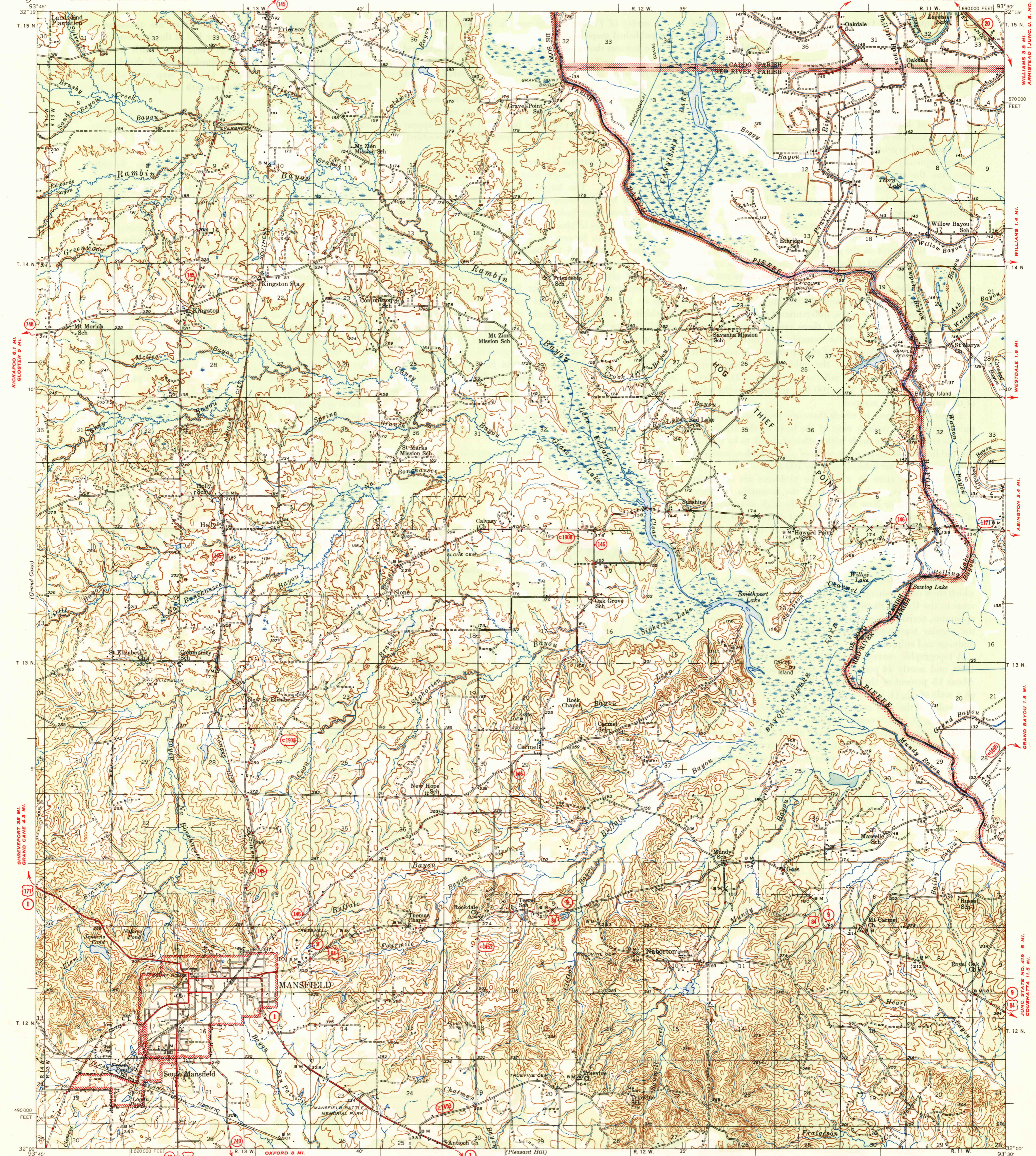


U.S.G.S.
FILE COPY
Inspection and Editing.

UNITED STATES
DEPARTMENT OF THE INTERIOR
GEOLOGICAL SURVEY

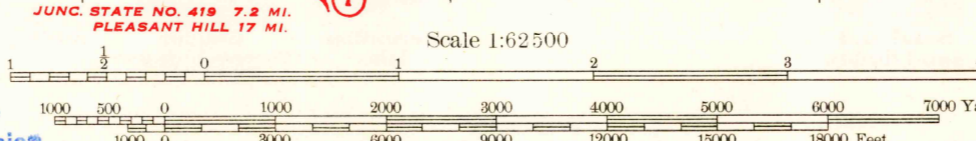
STATE OF LOUISIANA
DEPARTMENT OF PUBLIC WORKS
BATON ROUGE

SHREVEPORT (CIVIC CENTER) 25 MI.
CASPIANA 3.8 MI.
LOUISIANA
MANSFIELD QUADRANGLE
15-MINUTE SERIES



Maped by the Geological Survey
1943-1945
Only landmark buildings are shown
in Mansfield and South Mansfield
JUNC. STATE NO. 747 2 MI.
LOGANSPORT 16 MI.

OXFORD 9 MI.
PELICAN 12 MI.
JUNC. STATE NO. 419 7.2 MI.
PLEASANT HILL 17 MI.



U.S.G.S.
FILE COPY
Inspection and Editing.

Scale 1:62500
MANSFIELD, LA.
Edition of 1947
N 3200-W9330/15

ROAD CLASSIFICATION
1946
Dependable hard surface
Non-surface road
Secondary hard surface
All weather road
More than two lanes indicated along road with tick at point of change. 2 LANES, 4 LANES
U. S. Route (15)
State Route (26)

USCS
Historical File
Topographic Division
APPROXIMATE MEAN
DECLINATION, 1945
Contour interval 20 feet
Datum is mean sea level

U.S.G.S.
FILE COPY
Inspection and Editing.

MANSFIELD, LA.
Edition of 1947
N 3200-W9330/15

JUN 20 1947