

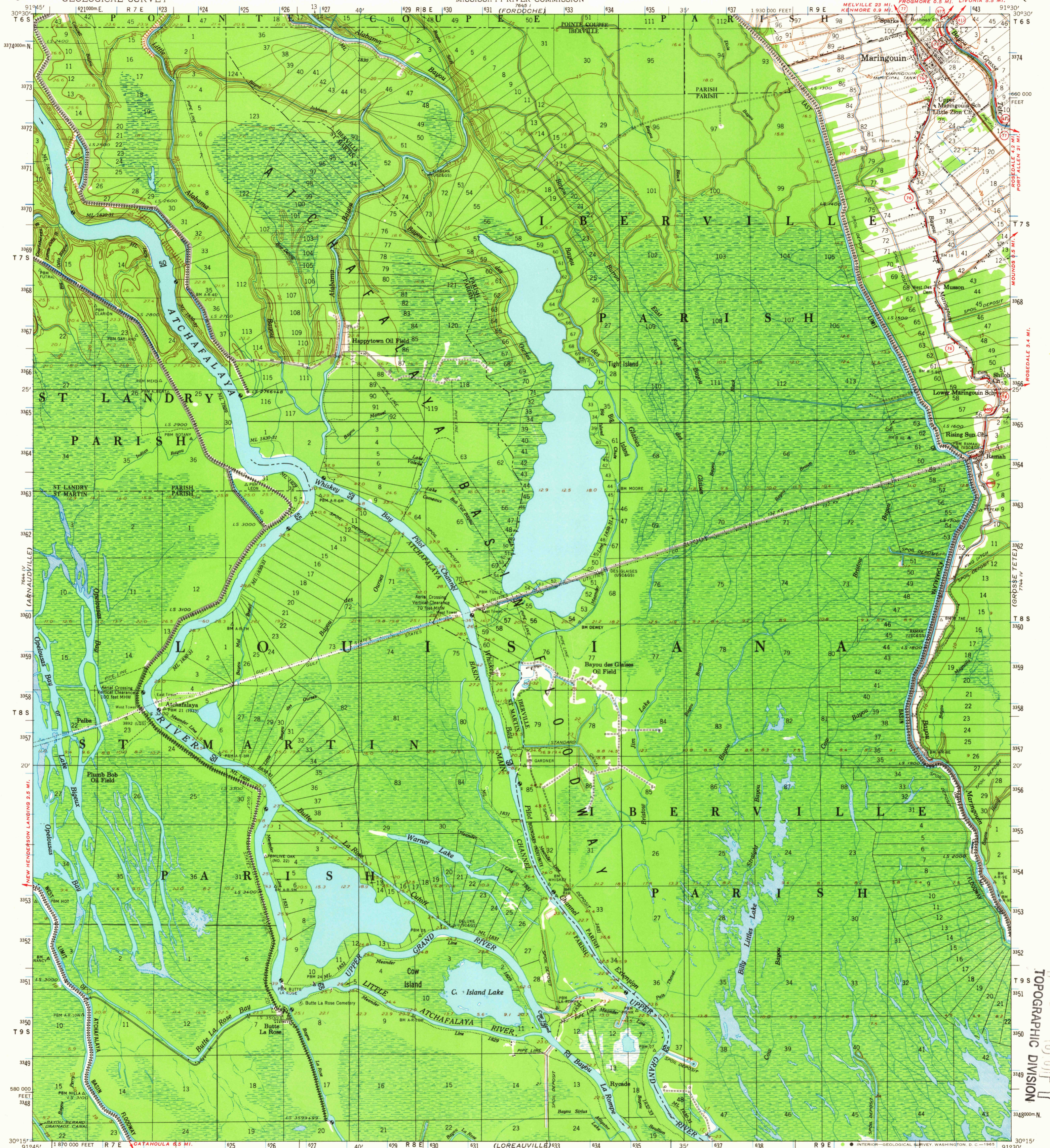
(PALMETTO)  
7644 I  
7644 II  
7644 III

UNITED STATES  
DEPARTMENT OF THE INTERIOR  
GEOLOGICAL SURVEY

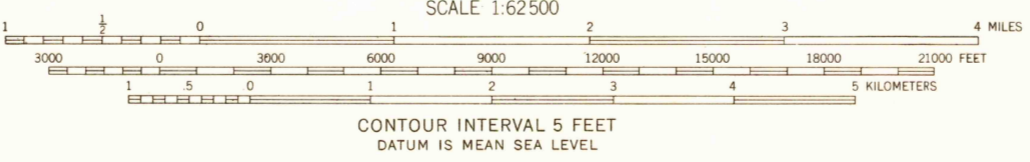
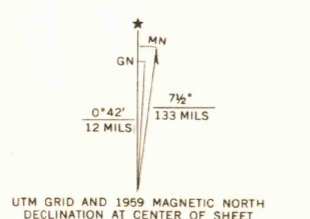
UNITED STATES ARMY  
CORPS OF ENGINEERS  
MISSISSIPPI RIVER COMMISSION

MARINGOIN QUADRANGLE  
LOUISIANA  
15 MINUTE SERIES (TOPOGRAPHIC)

(NEW ROADS)  
7644 IV  
7644 V  
7644 VI



Maped and edited by the Mississippi River Commission  
Published by the Geological Survey  
Control by USC&GS, USCE, MRC, and Louisiana Geodetic Survey  
Topography by planetable surveys 1930. Revised from aerial  
photographs taken 1959. Field check 1959  
Polyconic projection. 1927 North American datum  
10,000-foot grid based on Louisiana coordinate system, south zone  
1000-meter Universal Transverse Mercator grid ticks,  
zone 15, shown in blue  
Unchecked elevations are shown in brown



USCS  
Historical File  
Topographic Division  
QUADRANGLE LOCATION  
LOUISIANA

ROAD CLASSIFICATION  
Medium-duty ——— Light-duty ———  
Unimproved dirt ———  
State Route —○—  
The east half of this area also covered by 1:24,000-scale maps  
of Maringouin and Cow Bayou 7.5 minute quadrangles,  
surveyed 1953

FOR SALE BY U. S. GEOLOGICAL SURVEY, DENVER, COLORADO 80225, OR WASHINGTON, D. C. 20242,  
STATE OF LOUISIANA, DEPARTMENT OF PUBLIC WORKS, BATON ROUGE 4, LOUISIANA,  
AND BY THE MISSISSIPPI RIVER COMMISSION, VICKSBURG, MISSISSIPPI  
A FOLDER DESCRIBING TOPOGRAPHIC MAPS AND SYMBOLS IS AVAILABLE ON REQUEST

MARINGOIN, LA.  
N 3015-W 9130/15

1959  
AMS 7644 I-SERIES V785

USGS  
F115 COPY  
TOPOGRAPHIC DIVISION

5735  
JAN 7 1960

(ST. MARTINVILLE)  
7644 VII  
7644 VIII

(LAKE CHICOT)  
7644 IX  
7644 X