

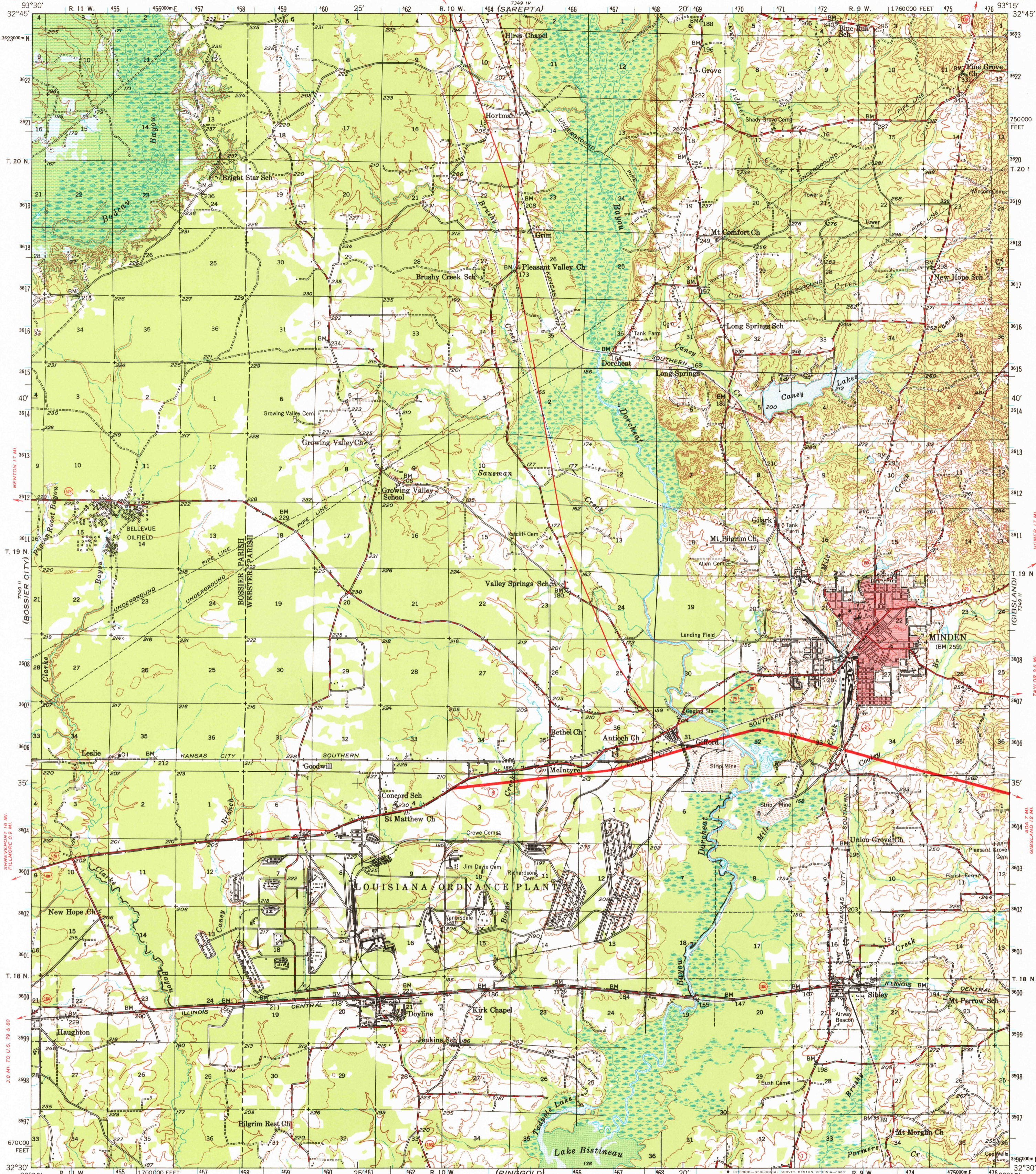
(PLAIN DEALING)

UNITED STATES
DEPARTMENT OF THE INTERIOR
GEOLOGICAL SURVEY

STATE OF LOUISIANA
DEPARTMENT OF PUBLIC WORKS
BATON ROUGE

MINDEN QUADRANGLE
LOUISIANA
15 MINUTE SERIES (TOPOGRAPHIC)

7349 (HOMER)



Mapped, edited, and published by the Geological Survey
Control by USGS and USC&GS

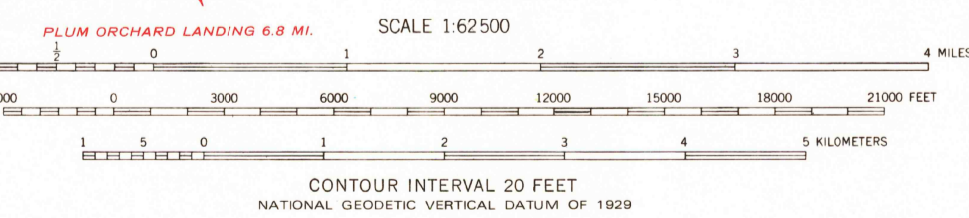
Culture and drainage in part compiled from
aerial photographs taken 1939
Topography by plane-table methods 1947

Polyconic projection, 1927 North American datum
10,000-foot grid based on Louisiana coordinate system,
north zone
1000-meter Universal Transverse Mercator grid ticks,
zone 15, shown in blue

Red tint indicates area in which only
landmark buildings are shown

Dashed land lines indicate approximate location
Broken light-blue lines indicate area subject to
inrequent inundation above Bodcau Bayou Dam
Spillway elevation 219

There may be private inholdings within the boundaries of
the National or State reservations shown on this map



ROAD CLASSIFICATION
1964
Heavy-duty ——— Light-duty - - - - -
Medium-duty ——— Unimproved dirt - - - - -
○ Interstate Route □ U.S. Route ○ State Route



To place on the predicted North American Datum 1983 move
the projection lines 12 meters south and 17 meters east

MINDEN, LA.
N3230-W9315/15

1947
AMS 7349 III-SERIES V785

USGS
Historical File
Topographic Division

JUL - 2 1980

1300