

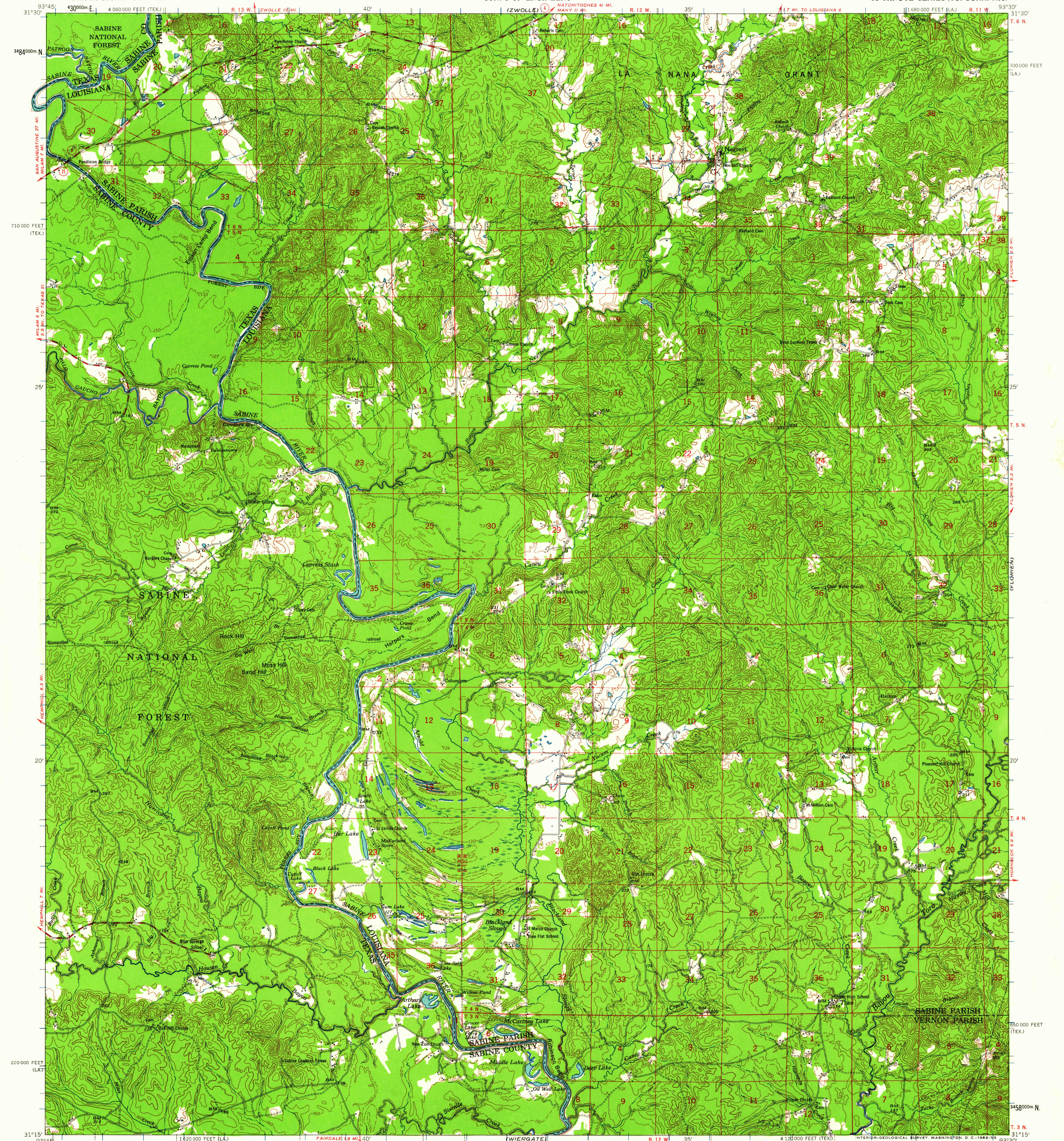
(PATRON)

UNITED STATES
DEPARTMENT OF THE INTERIOR
GEOLOGICAL SURVEY

UNITED STATES
DEPARTMENT OF THE ARMY
CORPS OF ENGINEERS

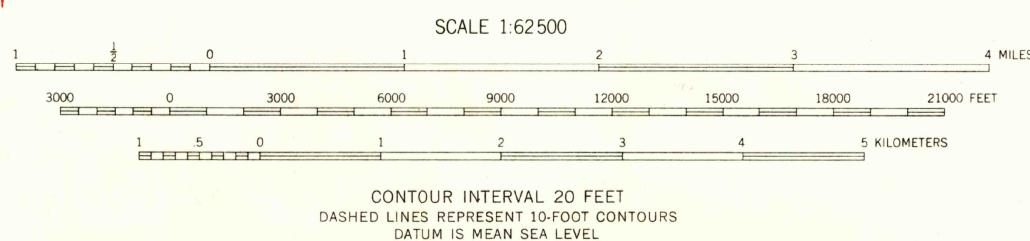
NEGREET QUADRANGLE
LOUISIANA—TEXAS
15 MINUTE SERIES (TOPOGRAPHIC)

(MANY)



Mapped by the Army Map Service
Published for civil use by the Geological Survey
Control by USGS, USCG&S, USCE, and Louisiana Geologic Survey
Compiled in 1956 from 1:25 000 scale maps of Negreet,
Salter Creek, Columbus, and Toro 7.5 minute quadrangles
Topography from aerial photographs by photogrammetric methods
Aerial photographs taken 1953-1954. Field check 1954
Polyconic projection. 1927 North American datum
10,000-foot grids based on Louisiana coordinate system,
north zone and Texas coordinate system, central zone
1000-meter Universal Transverse Mercator grid ticks,
zone 15, shown in blue
Dashed land lines indicate approximate locations
Unchecked elevations are shown in brown

TRUE NORTH
MAGNETIC NORTH
APPROXIMATE MEAN
DECLINATION, 1954



THIS MAP COMPLIES WITH NATIONAL MAP ACCURACY STANDARDS
FOR SALE BY U. S. GEOLOGICAL SURVEY, DENVER 25, COLORADO OR WASHINGTON 25, D. C.
AND BY THE STATE OF LOUISIANA, DEPARTMENT OF PUBLIC WORKS, BATON ROUGE 4, LOUISIANA
A FOLDER DESCRIBING TOPOGRAPHIC MAPS AND SYMBOLS IS AVAILABLE ON REQUEST

USGS
Historical File
Topographic Division



ROAD CLASSIFICATION
Medium-duty ——— Light-duty ———
Unimproved dirt ———
State Route

This area also covered by 1:24 000 scale maps of
Negreet, Salter Creek, Columbus, and Toro, 7.5
minute quadrangles, surveyed 1954
NEGREET, LA.—TEX.
N3115—W9330/15
1954

USGS Library
Reston, VA.
Topo Archive



JAN 25 1966
4595