

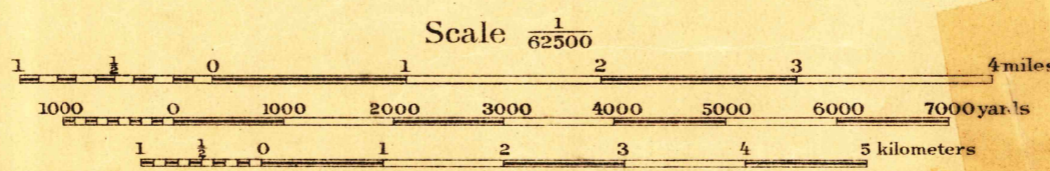
CONTROLLED RECONNAISSANCE  
654-S-I-E/2

CORPS OF ENGINEERS, U. S. ARMY  
TACTICAL MAP

LOUISIANA - MISSISSIPPI  
NICHOLSON QUADRANGLE  
GRID ZONE "C"



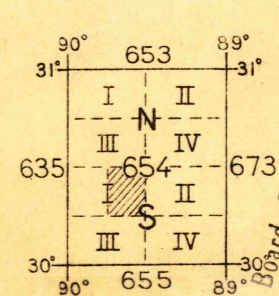
Field work and compilation under the direction of Colonel W. M. Black, Corps of Engineers, Department Engineer, Eastern Department.  
Base map compiled from map of Hancock Co., Miss., map of St. Tammany Parish, La. and other data.  
Field work by 1st. Lieut. John P. Keeler, C. A. C., Feb. to March 1912 and 2nd. Lieut. F. R. Garcin, C. A. C. March 1914.



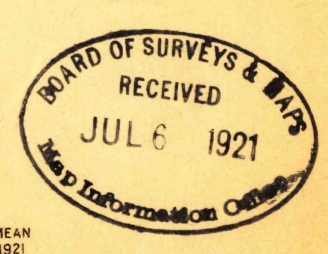
Contour Interval 10 feet  
Datum is mean sea level

FIVE THOUSAND YARD GRID COMPUTED FROM "GRID SYSTEM FOR PROGRESSIVE MAPS IN THE U. S." ZONE C, U. S. C. & G. S. SPECIAL PUBLICATION NO. 59 (THE LAST THREE DIGITS OF THE GRID NUMBERS ARE OMITTED)

NOTE: OFFICERS USING THIS MAP WILL MARK HEREON CORRECTIONS AND ADDITIONS WHICH COME TO THEIR ATTENTION AND MAIL DIRECT TO "THE CHIEF OF ENGINEERS, WASHINGTON, D. C."



Board of Surveys & Maps  
FILE COPY  
Map Information Office



USGS  
Historical File  
Topographic Division

Engineer Reproduction Plant, U. S. Army, Washington Barracks, D. C. 1921

NICHOLSON, LA.  
LA+MISS  
MISSISSIPPI