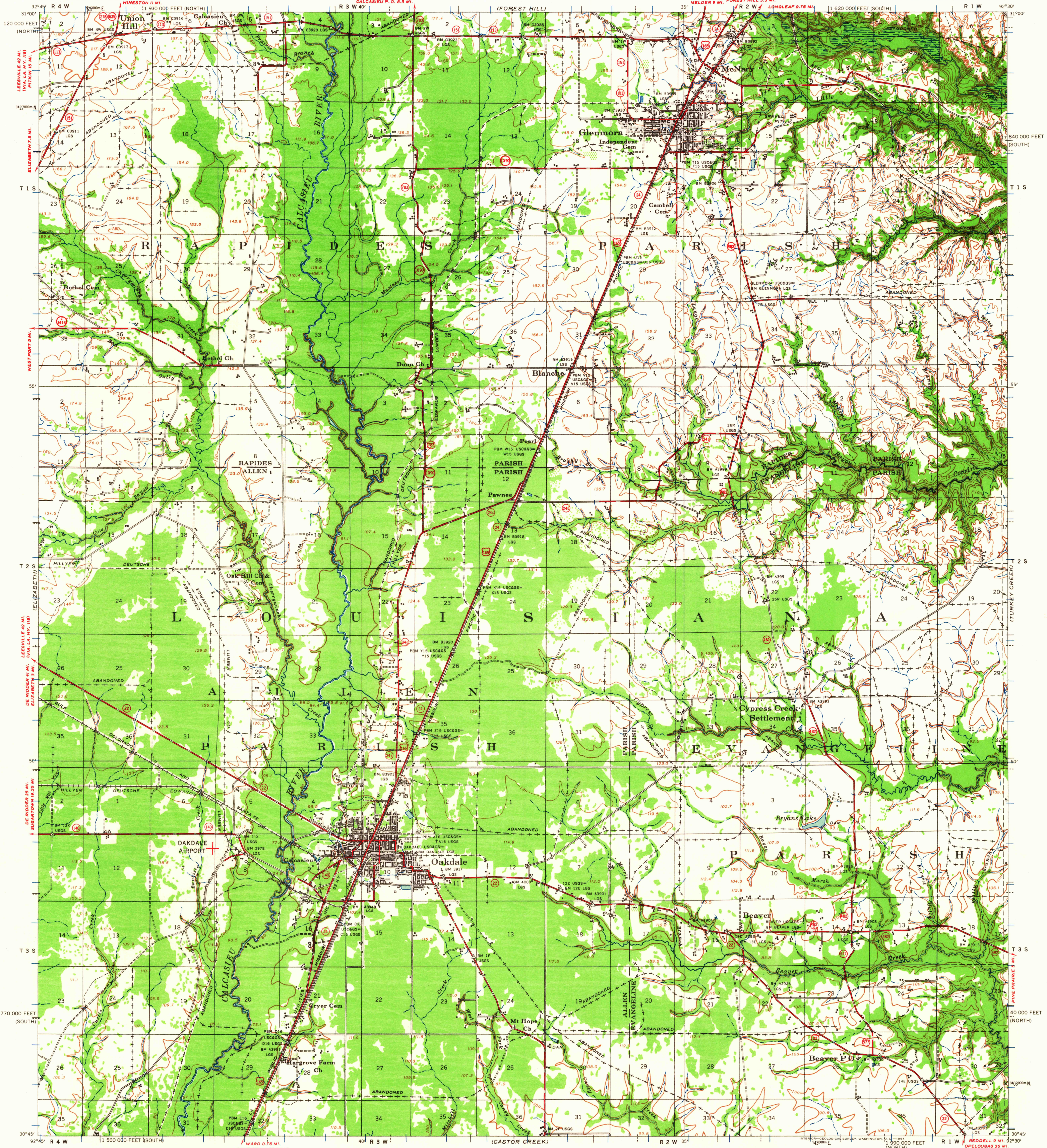
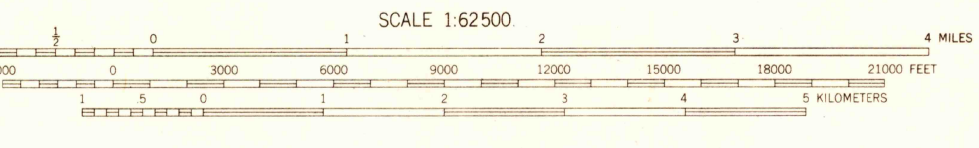
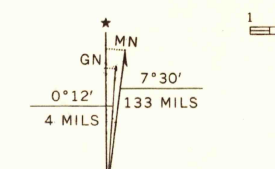


WAR DEPARTMENT  
CORPS OF ENGINEERS

LOUISIANA  
OAKDALE QUADRANGLE  
15 MINUTE SERIES (TOPOGRAPHIC)



Prepared under the direction of the President, Mississippi River Commission. Horizontal control by Mississippi River Commission, Corps of Engineers, U. S. Army, New Orleans District, U. S. G. S., U. S. C. & G. S., and Louisiana Geodetic Survey (L. G. S.). Vertical control by Mississippi River Commission, Corps of Engineers, U. S. Army, New Orleans District, U. S. C. & G. S., and Louisiana Geodetic Survey (L. G. S.). Descriptions, elevations and geodetic positions of bench marks may be obtained from New Orleans Engineer District, New Orleans, La. Topography by Corps of Engineers, U. S. Army, New Orleans District, 1938-42. Political boundaries are shown according to best available information and are subject to change except where established by court decision. Dashed land lines are projected. Work under Flood Control Act shown as of December 1941. Polyconic Projection, North American Datum 1927. 10,000-foot grid based on Louisiana coordinate system, north and south zones 1000-meter Universal Transverse Mercator grid ticks, zone 15, shown in blue.



Contour interval 5 feet changing from 80 foot contour to 20 feet.  
Datum is mean sea level. Elevations differ from mean gulf level elevations at Biloxi, Mississippi, by small fractions of a foot. Persons interested may secure elevations of bench marks as determined by the latest U. S. C. & G. S. adjustment, by applying to the U. S. Coast and Geodetic Survey.

REPRINTED FROM MILITARY EDITION FOR CIVIL USE  
FOR SALE BY U. S. GEOLOGICAL SURVEY, DENVER 25, COLORADO OR WASHINGTON 25, D. C.  
STATE OF LOUISIANA, DEPARTMENT OF PUBLIC WORKS, BATON ROUGE 4, LOUISIANA  
AND MISSISSIPPI RIVER COMMISSION, VICKSBURG, MISSISSIPPI  
A FOLDER DESCRIBING TOPOGRAPHIC MAPS AND SYMBOLS IS AVAILABLE ON REQUEST



LEGEND

Levee	+++++	Levee mile post	LMP
Retards and dikes	— — —	Levee station	LS
Revetment	— — —	Towhead	TH
River Gauge	⊙		

ROUTES USUALLY TRAVELED  
HARD IMPERVIOUS SURFACES  
OTHER SURFACE IMPROVEMENTS  
1941  
U. S. ROUTE  
STATE ROUTE  
This area also covered by 7.5-minute, 1:31 680-scale maps: Glenmora, Pawnee, Oakdale, and Beaver 1935

OAKDALE, LOUISIANA.

EDITION OF 1942  
N3045-W9230/15

APR 13 1964

1185