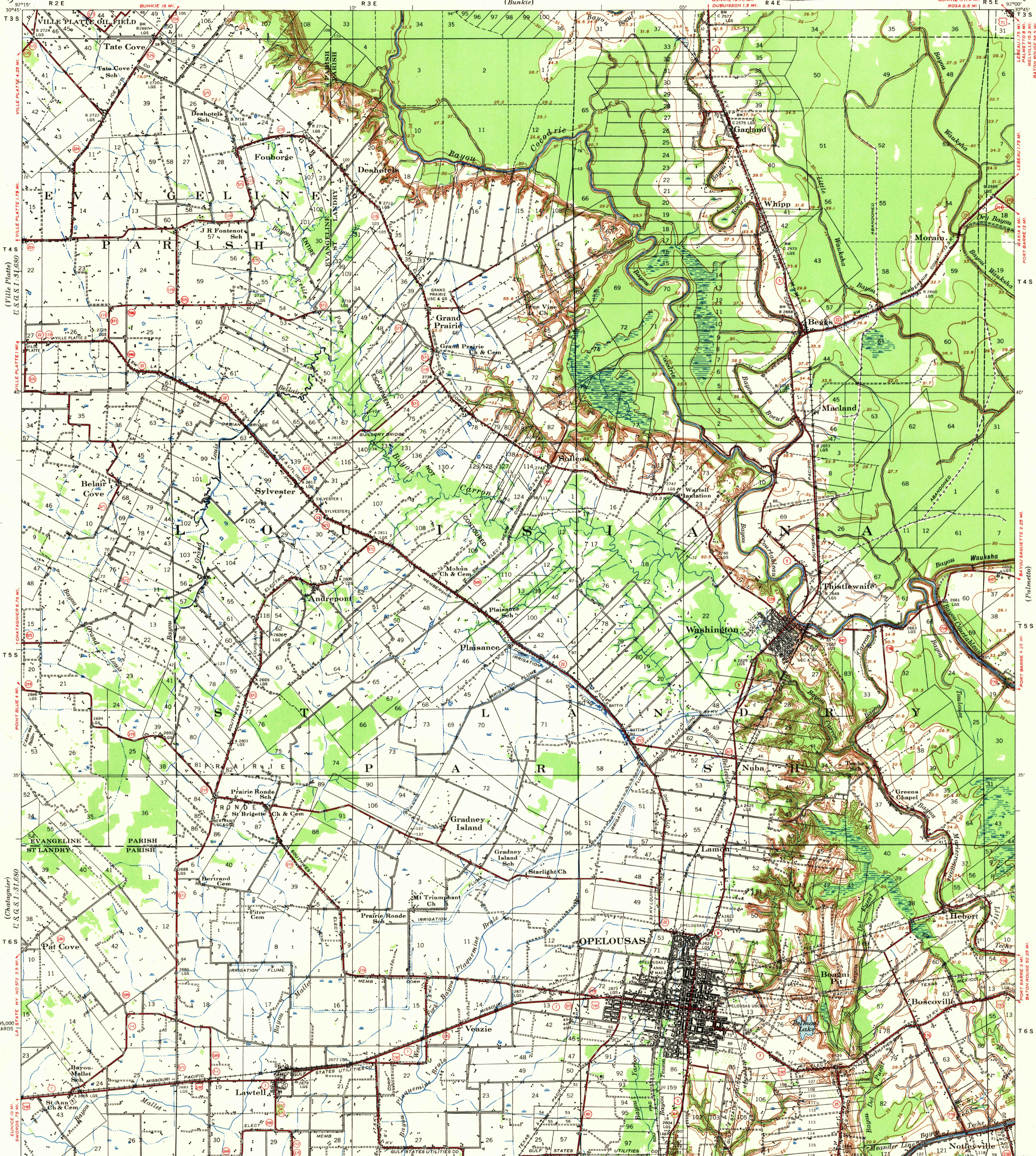


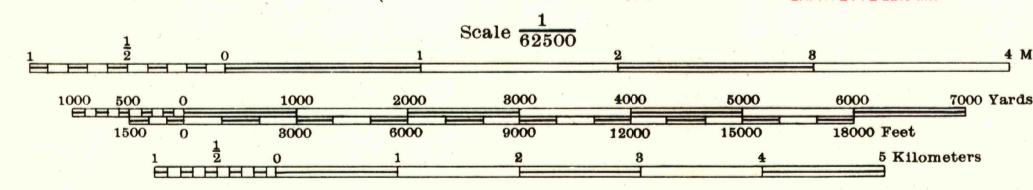
U. S. G. S. FILE COPY Inspection and Editing.

LOUISIANA OPELOUSAS QUADRANGLE GRID ZONE "C"

WAR DEPARTMENT CORPS OF ENGINEERS



Prepared under the direction of the President, Mississippi River Commission. Horizontal control by Mississippi River Commission and Corps of Engineers, U. S. Army, Second New Orleans District, U.S.C. & G.S., U.S.G.S. and Louisiana Geodetic Survey (L.G.S.) Vertical control by Mississippi River Commission and Corps of Engineers, U. S. Army, Second New Orleans District and Louisiana Geodetic Survey. Descriptions, elevations and geodetic positions of bench marks may be obtained from New Orleans Engineer District, New Orleans, La. Topography by Corps of Engineers, U. S. Army, Second New Orleans District, 1938. Political boundaries are shown according to best available information and are subject to change except where established by court decision. Dashed land lines are projected. Work under Flood Control Act shown as of December, 1939. Polyconic Projection, North American Datum 1927.



USGS Historical File Topographic Division. LEGEND: Levee, Retards and dikes, Revetment, River Gage, Levee mile post, Levee station, Towhead, LMP, LS, TH. APPROXIMATE MEAN DECLINATION 1938 ANNUAL MAGNETIC CHANGE 2' INCREASE. DISTANCES ABOVE MOUTH OF BAYOU TECHE ARE SHOWN AT 5 MILE INTERVALS. ROUTES USUALLY TRAVELED, HARD IMPERVIOUS SURFACES, OTHER SURFACE IMPROVEMENTS 1940, U. S. ROUTE, STATE ROUTE.

Additional copies may be procured from The President, Mississippi River Commission, Vicksburg, Miss. 20 cents per copy

U. S. G. S. FILE COPY Inspection and Editing.

OPELOUSAS, LA. EDITION OF 1939 N3030-W9200/15