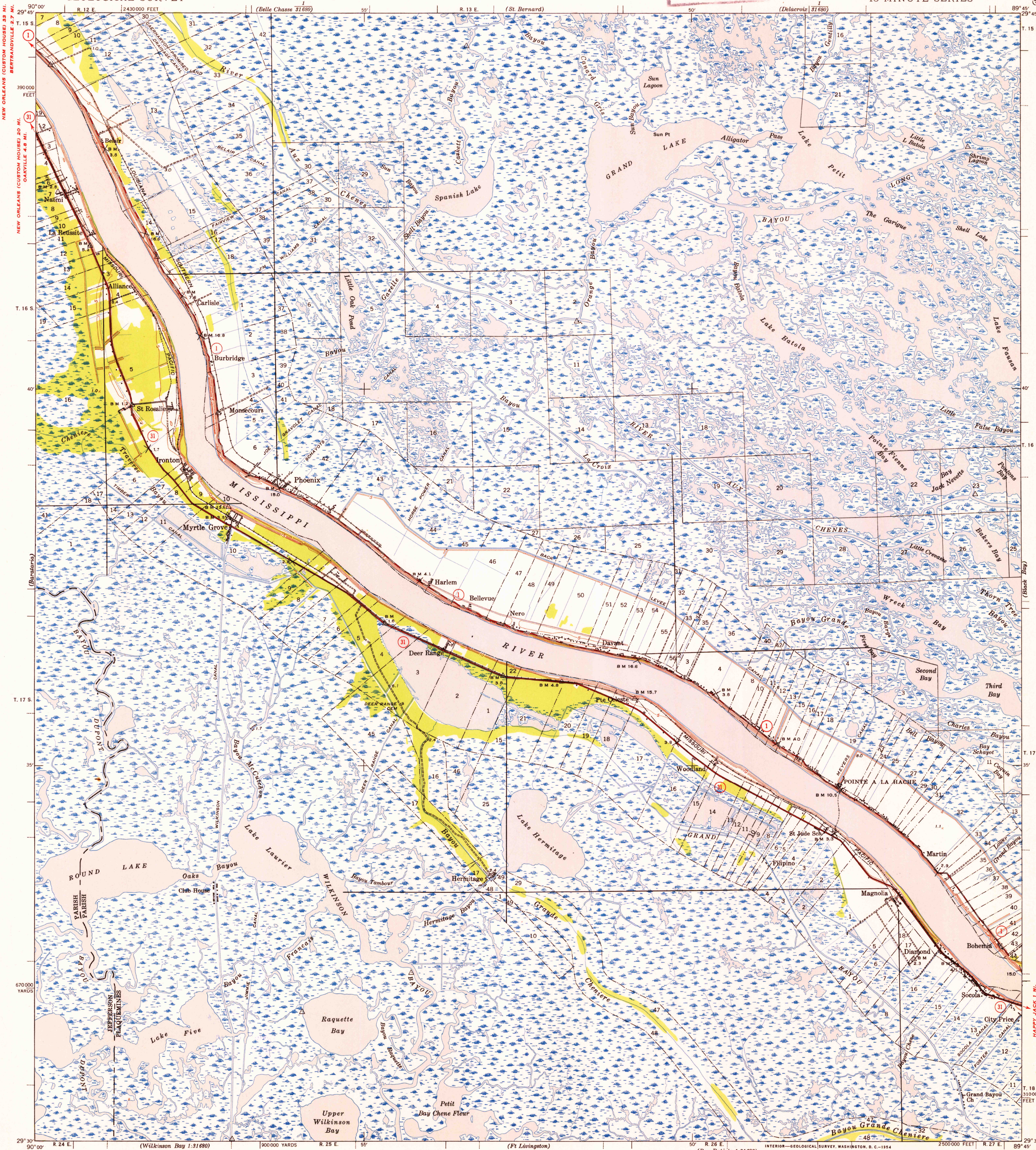


(Reprintable)

UNITED STATES
DEPARTMENT OF THE INTERIOR
GEOLOGICAL SURVEY

FILE COPY
Inspection and Editing

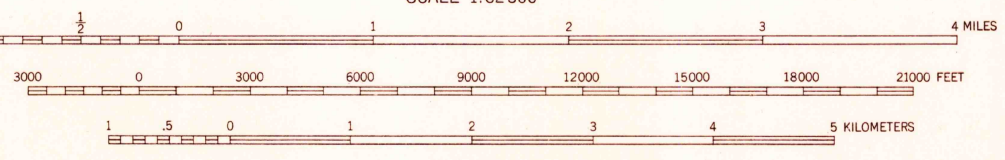
LOUISIANA
POINTE A LA HACHE QUADRANGLE
15-MINUTE SERIES



Topography by B. E. Adams, H. W. Toy, and F. W. Weber
Surveyed in 1939
Base compiled in cooperation with the State of Louisiana

ROAD CLASSIFICATION
Heavy-duty ——— 4 LANE, 6 LANE Light-duty ———
Medium-duty - - - 4 LANE, 6 LANE Unimproved dirt - - -
U. S. Route State Route

TRUE NORTH
MAGNETIC NORTH
APPROXIMATE MEAN
DECLINATION, 1939



Contour interval 5 feet
Datum is mean sea level

FOR SALE BY U. S. GEOLOGICAL SURVEY, FEDERAL CENTER, DENVER, COLORADO OR WASHINGTON 25, D. C.
AND BY THE STATE OF LOUISIANA DEPARTMENT OF PUBLIC WORKS, BATON ROUGE 4, LOUISIANA
A FOLDER DESCRIBING TOPOGRAPHIC MAPS AND SYMBOLS IS AVAILABLE ON REQUEST

USGS
Historical File
Topographic Division

FILE COPY
Inspection and Editing

Polyconic projection. 1927 North American datum
5000 yard grid based on U. S. zone system, C
10000 foot grid based on Louisiana (South)
rectangular coordinate system
Land lines added from General Land Office
records adjusted to natural features and control
Land lines pertaining to Tps 17 and 18 S., R. 24 E. are omitted
because land plats and topography can not be reconciled.

POINTE A LA HACHE, LA.

N2930-W8945/15
1939