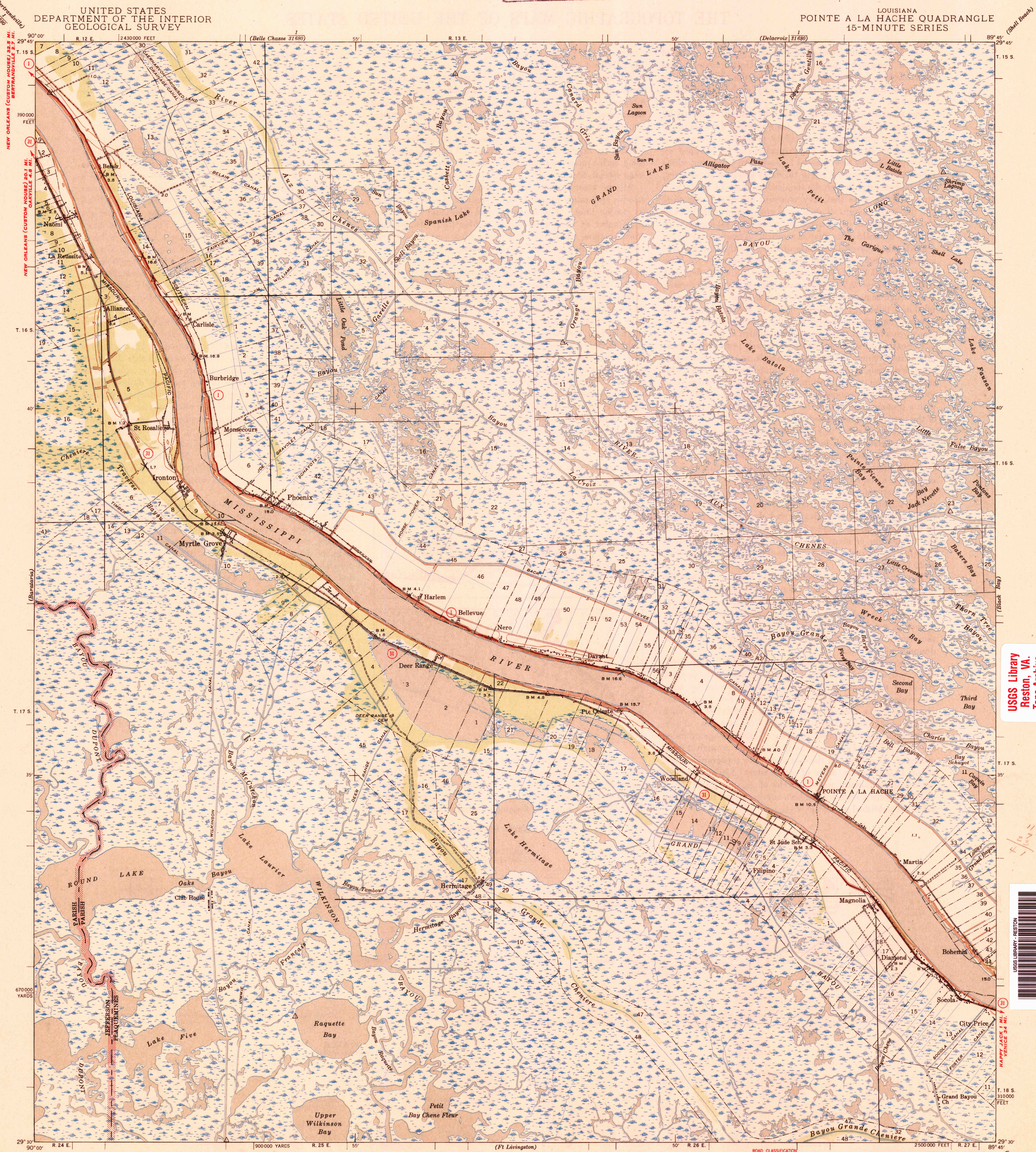


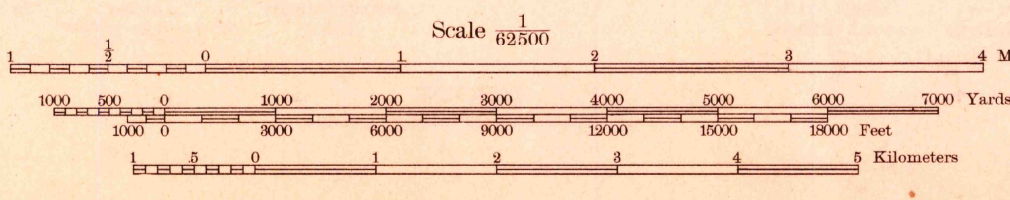
UNITED STATES
DEPARTMENT OF THE INTERIOR
GEOLOGICAL SURVEY

LOUISIANA
POINTE A LA HACHE QUADRANGLE
15-MINUTE SERIES



Topography by B. E. Adams, H. W. Toy, and F. W. Weber
Surveyed in 1939
Base compiled in cooperation with the State of Louisiana

APPROXIMATE MEAN
DECLINATION, 1939



ROAD CLASSIFICATION
1944
Dependable hard-surface heavy-duty road
Loose-surface, graded
Unsurfaced, graded
Dry weather roads
All-weather road
Dirt road
More than two lanes with center line with tick at point of change

U. S. Route
State Route
U. S. G. S.
FILE COPY
Inspection and Editing.

Polyconic projection. 1927 North American datum
5000 yard grid based on U. S. zone system, C
10000 foot grid based on Louisiana (South)
rectangular coordinate system
Land lines added from General Land Office
records adjusted to natural features and control
Land lines pertaining to Twp 17 and 18 S., R. 24 E. are omitted
because land plats and topography can not be reconciled.

POINTE A LA HACHE, LA.
Edition of 1944
N2930-W8945/15

JUL 10 1944

USGS Library
Reston, VA.
Topo Archive

USGS LIBRARY - RESTON
3 1818 00503880 5