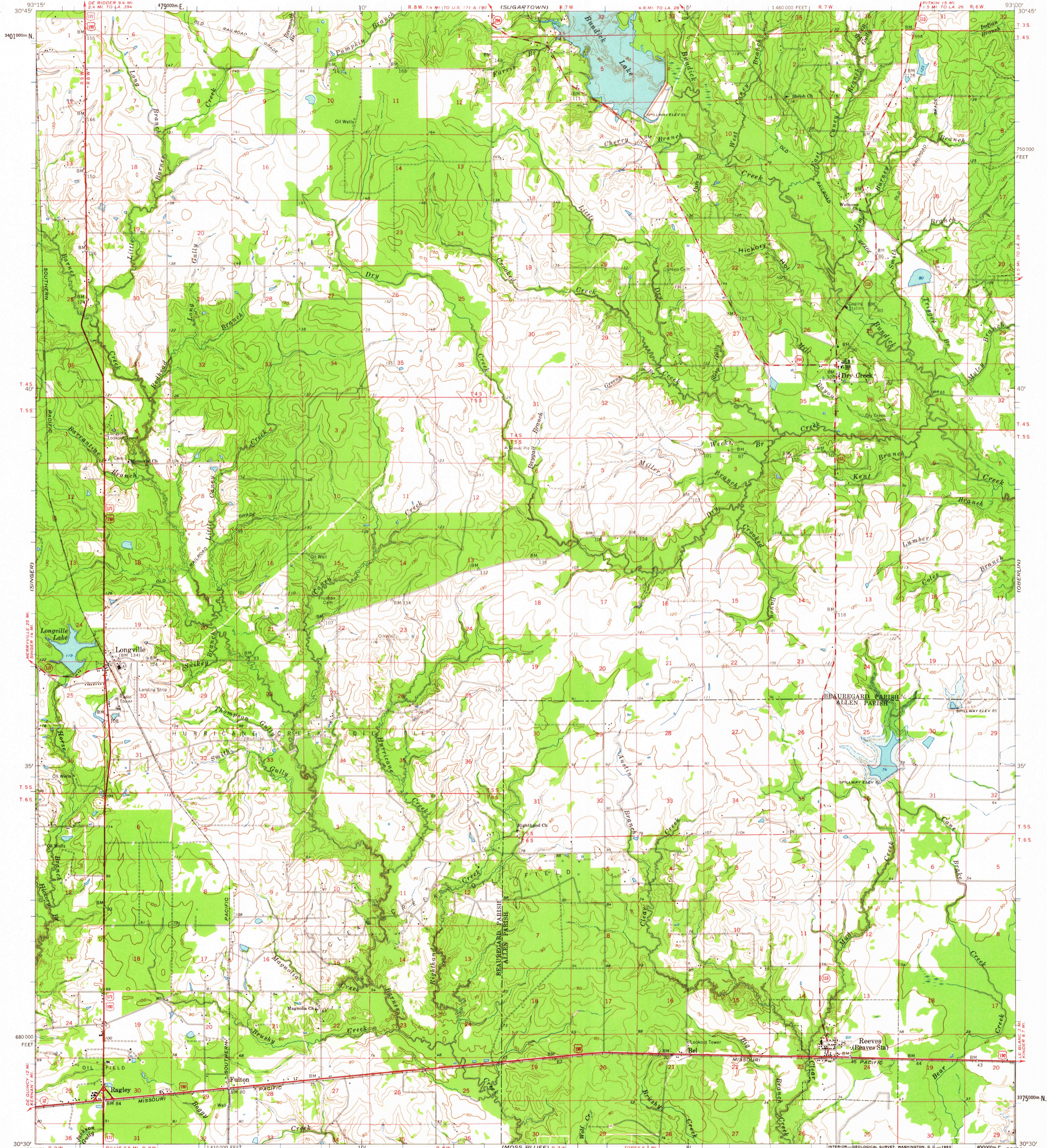
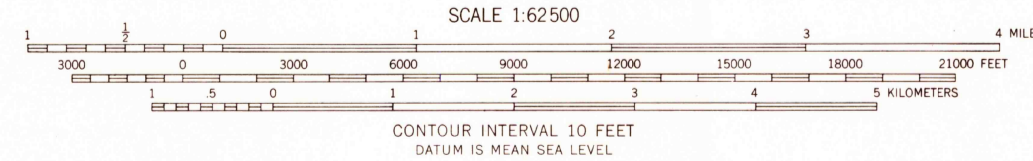
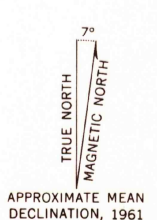


UNITED STATES
DEPARTMENT OF THE INTERIOR
GEOLOGICAL SURVEY

REEVES QUADRANGLE
LOUISIANA
15 MINUTE SERIES (TOPOGRAPHIC)



Mapped, edited, and published by the Geological Survey with financial cooperation by State of Louisiana Department of Public Works
Control by USGS, USC&GS, USCE, and Louisiana Geodetic Survey
The NE quarter compiled in 1962 from 1:24,000-scale map dated 1961. The NW quarter and the south half topography by photogrammetric methods from aerial photographs taken 1954 and planetable surveys 1960-61
Polyconic projection. 1927 North American datum 10,000-foot grid based on Louisiana coordinate system, south zone 1000-meter Universal Transverse Mercator grid ticks, zone 15, shown in blue
Areas covered by dashed light-blue pattern are subject to controlled inundation



THIS MAP COMPLIES WITH NATIONAL MAP ACCURACY STANDARDS
FOR SALE BY U. S. GEOLOGICAL SURVEY, DENVER 25, COLORADO OR WASHINGTON 25, D. C.
AND BY THE STATE OF LOUISIANA, DEPARTMENT OF PUBLIC WORKS, BATON ROUGE 4, LOUISIANA
A FOLDER DESCRIBING TOPOGRAPHIC MAPS AND SYMBOLS IS AVAILABLE ON REQUEST

USGS
Historical File
Topographic Division



ROAD CLASSIFICATION

Heavy-duty	Light-duty
Medium-duty	Unimproved dirt

USGS Route State Route

FILE COPY TOPOGRAPHIC DIVISION

REEVES, LA.
N 3030-W 9300/15
1961

AUG 14 1963

2150