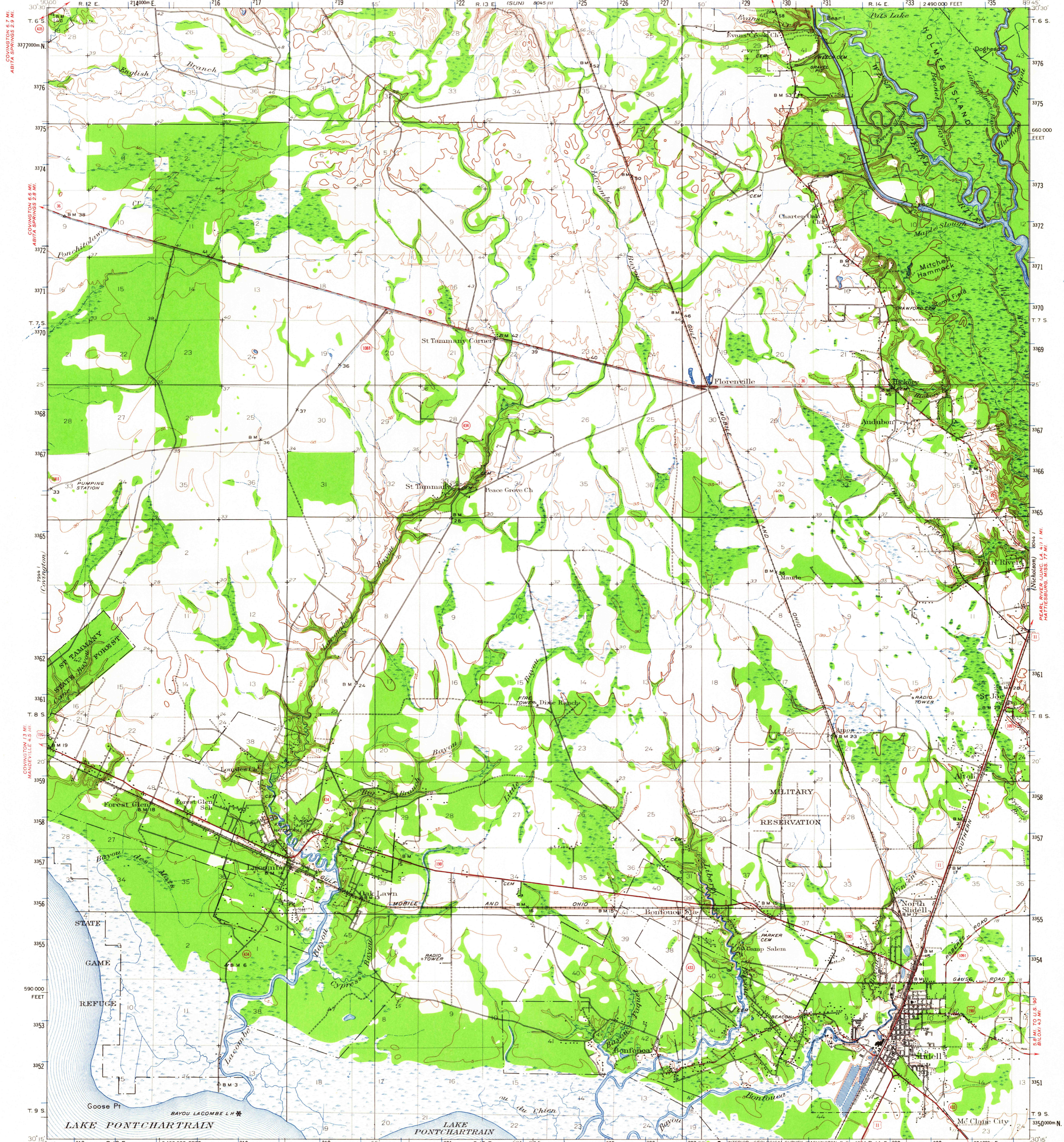


BOGALUSA 30 MI.
TALISHEEK 8 MI.

UNITED STATES
DEPARTMENT OF THE INTERIOR
GEOLOGICAL SURVEY

UNITED STATES
DEPARTMENT OF THE ARMY
CORPS OF ENGINEERS

LOUISIANA
(ST TAMMANY PARISH)
SLIDELL QUADRANGLE



COVINGTON 4.7 MI.
ABITA SPRINGS 2.9 MI.

COVINGTON 4.3 MI.
MADEUVILLE 4.3 MI.

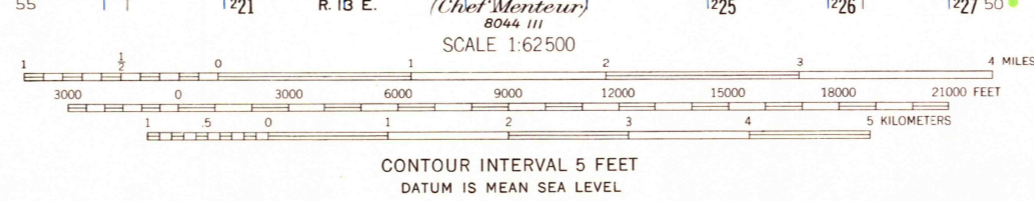
SLIDELL 4.2 MI.
BILOXI 4.2 MI.

BOGALUSA 26 MI.
TALISHEEK 4.8 MI.

PEARL RIVER QUADR. LA 4.1 MI.
HATTIESBURG, MISS. 7.7 MI.

SLIDELL 4.2 MI.
BILOXI 4.2 MI.

Topography by Daniel Kennedy, J.B. Leachman, and J.H. Taubr. Culture and drainage in part compiled from aerial photographs taken by Air Corps, U.S. Army Control by U.S. Geological Survey and U.S. Coast and Geodetic Survey. Surveyed in 1932. Revised in 1950.



ROAD CLASSIFICATION
Heavy-duty ——— Light-duty ———
Medium-duty ——— Unimproved dirt ———
U.S. Route ——— State Route ———

USGS
Historical File
Topographic Division

SLIDELL, LA. NOV 9 1964
N3015-W8945/15
1950
AMS 8044 IV—SERIES V785

FOR SALE BY U. S. GEOLOGICAL SURVEY, DENVER 25, COLORADO OR WASHINGTON 25, D. C.
AND BY THE STATE OF LOUISIANA, DEPARTMENT OF PUBLIC WORKS, BATON ROUGE 4, LOUISIANA
A FOLDER DESCRIBING TOPOGRAPHIC MAPS AND SYMBOLS IS AVAILABLE ON REQUEST