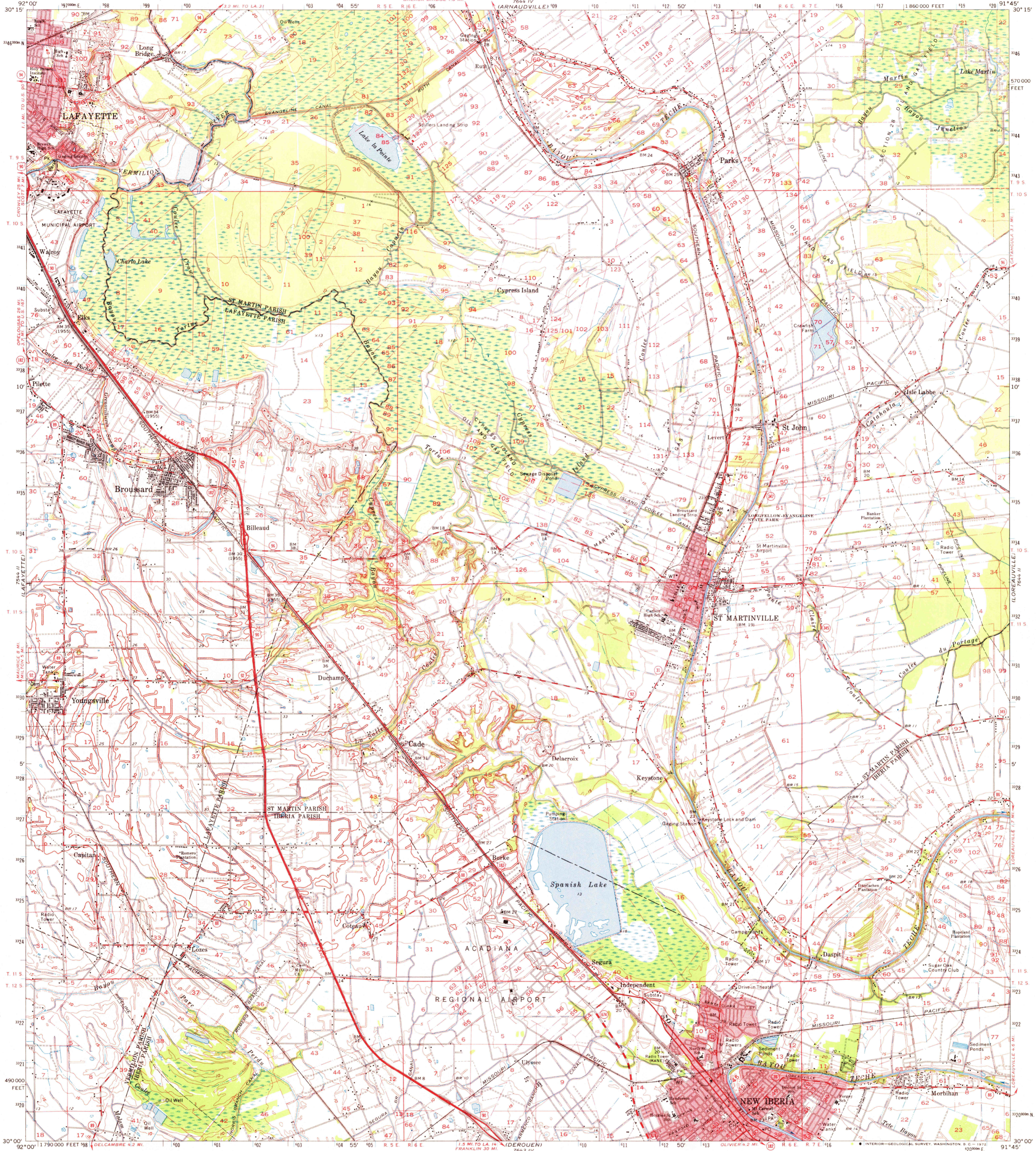
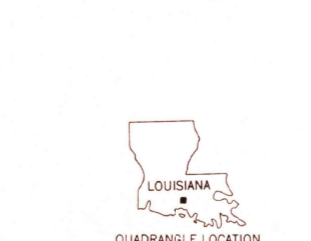
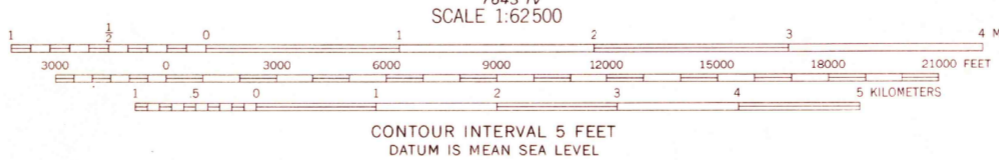
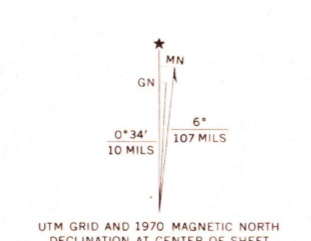


UNITED STATES
DEPARTMENT OF THE INTERIOR
GEOLOGICAL SURVEY

ST. MARTINVILLE QUADRANGLE
LOUISIANA
15 MINUTE SERIES (TOPOGRAPHIC)



Mapped, edited, and published by the Geological Survey
Control by USGS, USC&GS, USCE, and Louisiana Department of Highways
Planimetry by photogrammetric methods from aerial photographs
taken 1951. Topography by plane-table surveys 1957. Revised
from aerial photographs taken 1969. Field checked 1970
Polyconic projection. 1927 North American datum
10,000-foot grid based on Louisiana coordinate system, south zone
1000-meter Universal Transverse Mercator grid ticks,
zone 15, shown in blue
Red tint indicates areas in which only landmark buildings are shown
All or part of this quadrangle lies within a subsidence area
Bench marks have been adjusted to 1964 leveling unless otherwise
indicated by parenthetical dates



ROAD CLASSIFICATION

Primary highway, all weather, hard surface	Light-duty road, all weather, improved surface
Secondary highway, all weather, hard surface	Unimproved road, fair or dry weather
U. S. Route	State Route

THIS MAP COMPLIES WITH NATIONAL MAP ACCURACY STANDARDS
FOR SALE BY U. S. GEOLOGICAL SURVEY, DENVER, COLORADO 80225 OR WASHINGTON, D. C. 20242
AND BY THE STATE OF LOUISIANA, DEPARTMENT OF PUBLIC WORKS, BATON ROUGE, LOUISIANA 70804
A FOLDER DESCRIBING TOPOGRAPHIC MAPS AND SYMBOLS IS AVAILABLE ON REQUEST

USGS HISTORICAL FILE TOPOGRAPHIC DIVISION
ST. MARTINVILLE, LA. N3000-W9145/15
1970
AMS 7644 III-SERIES V785

MAY 29 1972
2990