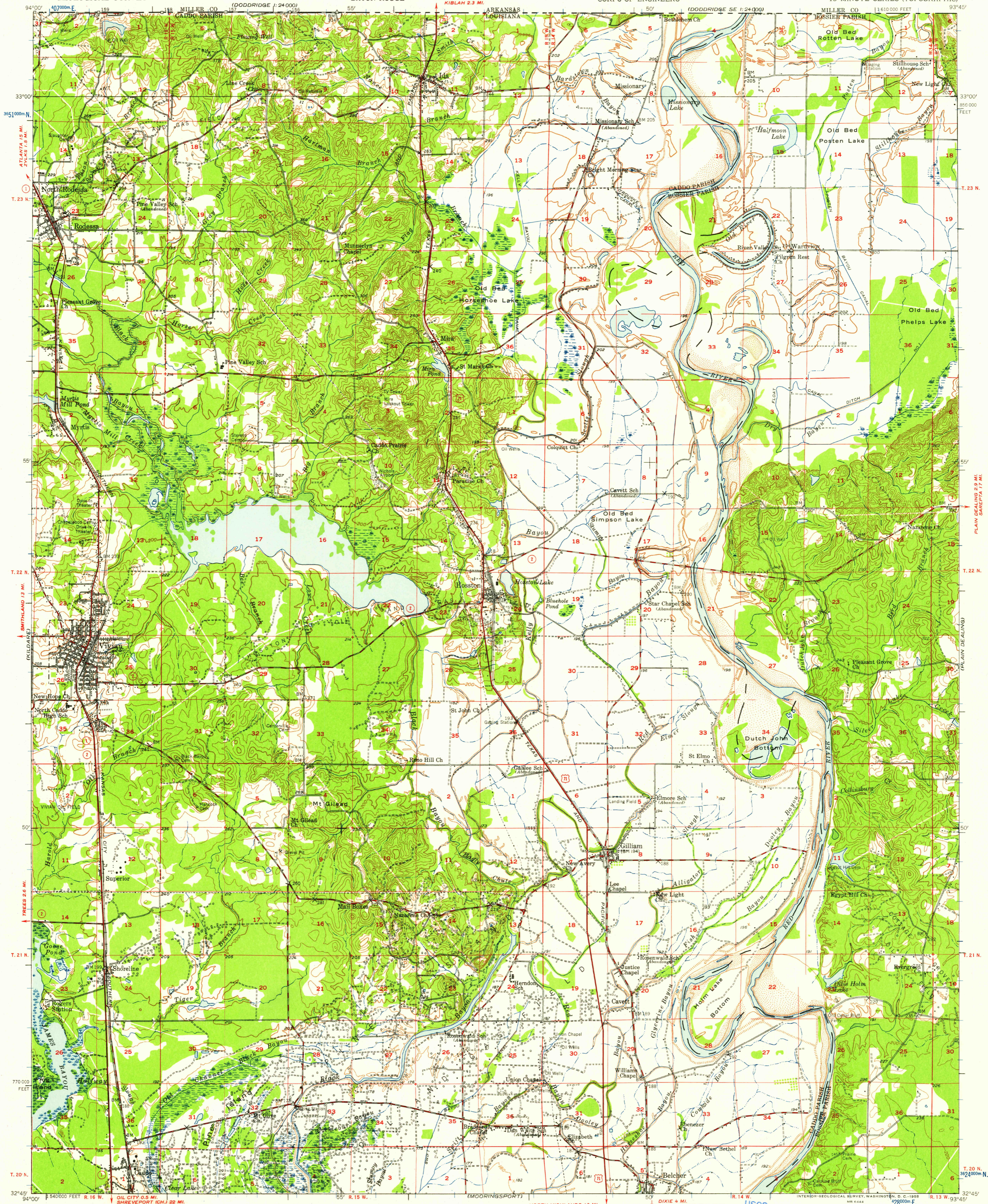
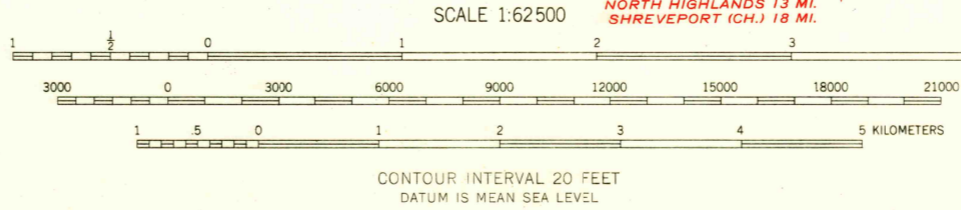


BRADLEY 1:24,000



Maped, edited, and published by the Geological Survey
Control by USGS, USC&GS, USCE, and Louisiana Geodetic Survey
Topography by planetable surveys 1942-1944
Culture and drainage revised from aerial photographs
taken 1955. Field check 1956
Polyconic projection. 1927 North American datum
10,000-foot grid based on Louisiana coordinate system,
north zone
1000-meter Universal Transverse Mercator grid ticks,
zone 15, shown in blue

TRUE NORTH
MAGNETIC NORTH
APPROXIMATE MEAN
DECLINATION, 1956



USGS
Historical File
Topographic Division
ROAD CLASSIFICATION
Heavy-duty — Light-duty
Medium-duty — Unimproved dirt
U. S. Route State Route



U.S.G.S.
FILE COPY
TOPOGRAPHIC DIVISION

VIVIAN, LA.
N 3245—W 9345/15
1956

FOR SALE BY U. S. GEOLOGICAL SURVEY, DENVER 2, COLORADO OR WASHINGTON 25, D. C.
AND BY THE STATE OF LOUISIANA, DEPARTMENT OF PUBLIC WORKS, BATON ROUGE 4, LOUISIANA
A FOLDER DESCRIBING TOPOGRAPHIC MAPS AND SYMBOLS IS AVAILABLE ON REQUEST

AUG 4 1958
2890