

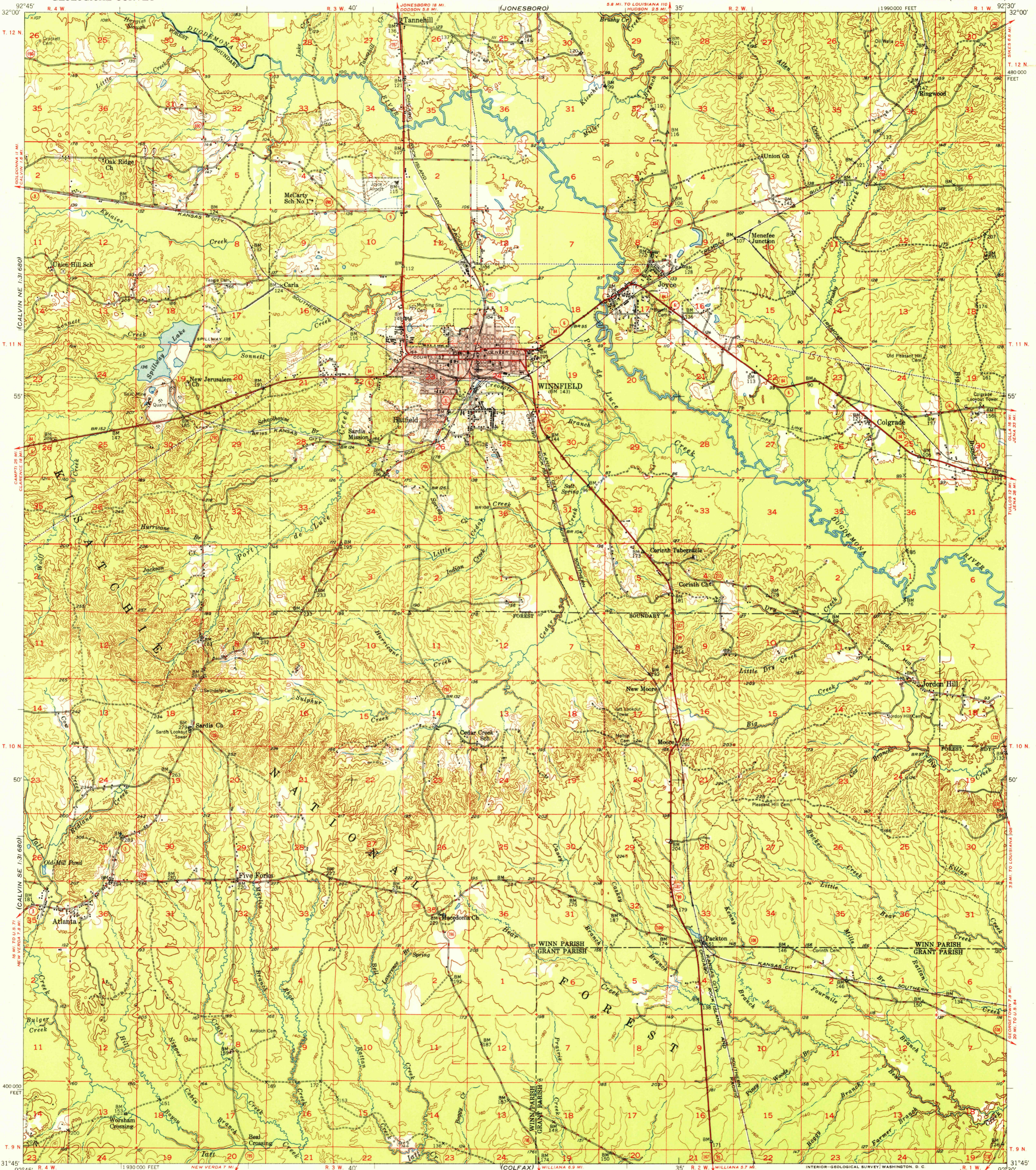
(GOLDONNA)

UNITED STATES
DEPARTMENT OF THE INTERIOR
GEOLOGICAL SURVEY

U. S. G. S.
FILE COPY
Inspection and Rating

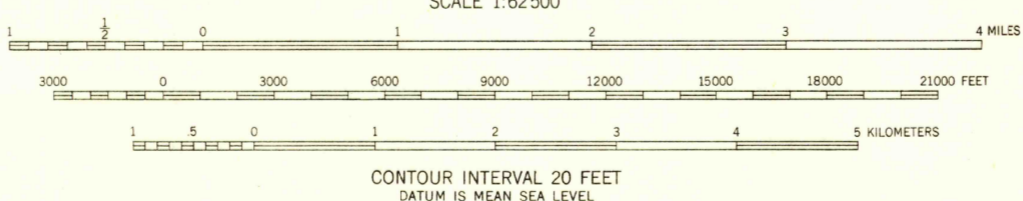
STATE OF LOUISIANA
DEPARTMENT OF PUBLIC WORKS
BATON ROUGE
(JONESBORO)

WINNFIELD QUADRANGLE
LOUISIANA
15 MINUTE SERIES (TOPOGRAPHIC)



Mapped, edited, and published by the Geological Survey
Control by Louisiana Geodetic Survey,
USGS and USC&GS
Culture and drainage in part compiled from
aerial photographs taken 1947
Topography by plane-table methods 1950
Polyconic projection. 1927 North American datum
10,000-foot grid based on Louisiana coordinate system
north zone
Red tint indicates area in which only
landmark buildings are shown

TRUE NORTH
MAGNETIC NORTH
APPROXIMATE MEAN
DECLINATION, 1950



USGS
Historical File
Topographic Division

U. S. G. S.
FILE COPY
Inspection and Rating

ROAD CLASSIFICATION
HEAVY-DUTY ALL WEATHER ROADS DRY WEATHER ROADS
Medium-duty LANE LANE Improved dirt
Loose-surface, graded, or narrow hard-surface
U. S. Route State Route

WINNFIELD, LA.
N3145-W9230/15
EDITION OF 1951

THIS MAP COMPLIES WITH NATIONAL MAP ACCURACY STANDARDS
FOR SALE BY U. S. GEOLOGICAL SURVEY, FEDERAL CENTER, DENVER, COLORADO OR WASHINGTON 25, D. C.
AND BY THE STATE OF LOUISIANA, DEPARTMENT OF PUBLIC WORKS, BATON ROUGE 4, LOUISIANA
A FOLDER DESCRIBING TOPOGRAPHIC MAPS AND SYMBOLS IS AVAILABLE ON REQUEST

APR 12 1951

2065