

ST. FRANCISVILLE

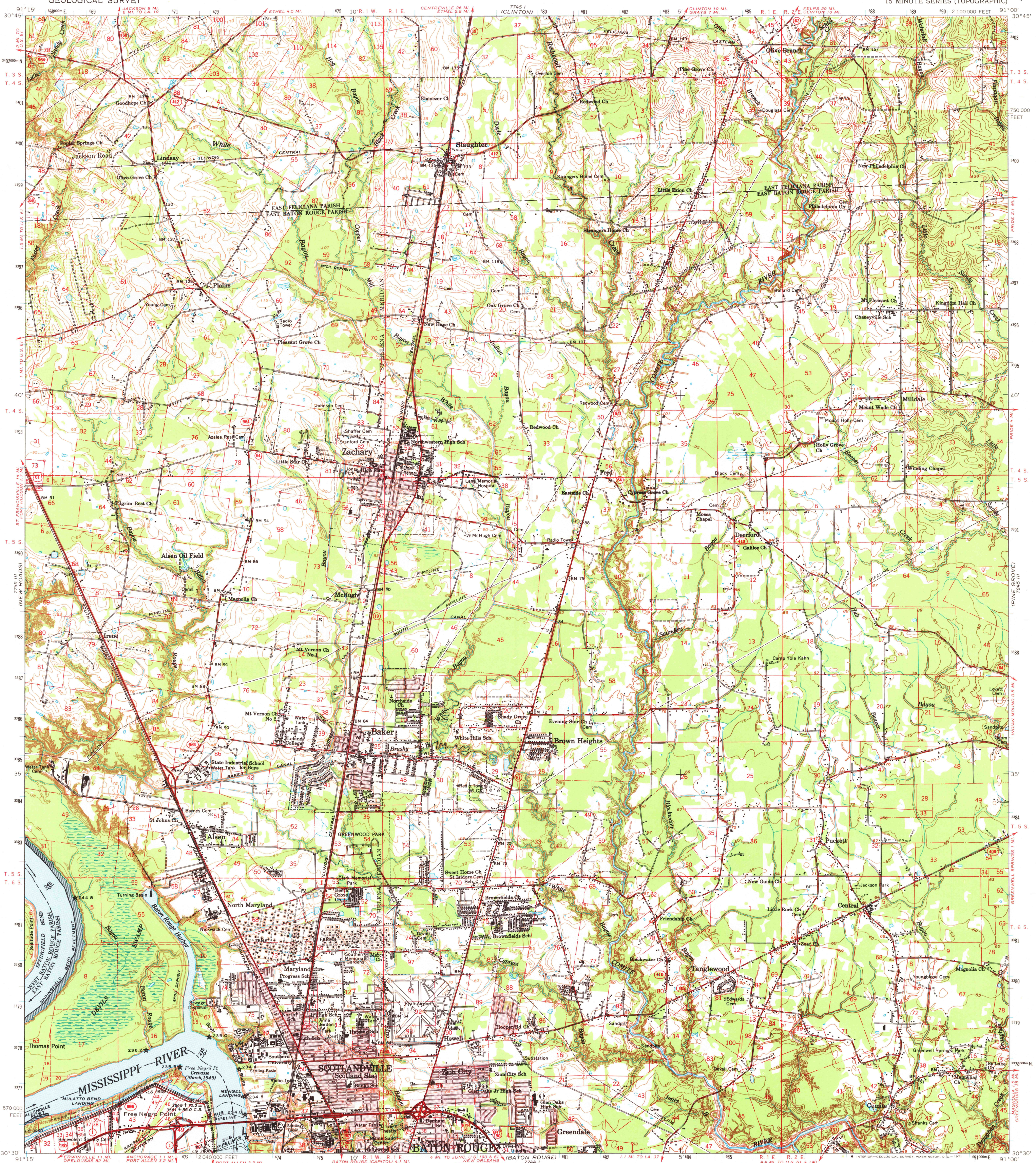
FELICIANA

DEERWOOD

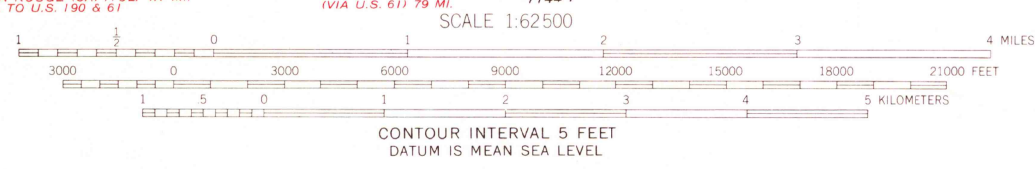
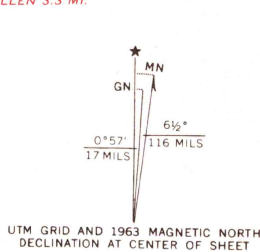
GREENWELL SPRINGS

UNITED STATES
DEPARTMENT OF THE INTERIOR
GEOLOGICAL SURVEY

ZACHARY QUADRANGLE
LOUISIANA
15 MINUTE SERIES (TOPOGRAPHIC)



Prepared by the Mississippi River Commission
Published by the Geological Survey
Control by USGS, USC&GS and Louisiana Geodetic Survey
Compiled in 1964 from 1:24,000-scale, USGS maps dated 1963
Polyconic projection. 1927 North American datum
10,000-foot grid based on Louisiana coordinate system,
south zone
1000-meter Universal Transverse Mercator grid ticks,
zone 15, shown in blue
Rec tint indicates areas in which only landmark
buildings are shown
No distinction is made between dwellings, barns, commercial,
and industrial buildings
Distances on Mississippi River, above Head of Passes,
are shown at 5 mile intervals



CONTOUR INTERVAL 5 FEET
DATUM IS MEAN SEA LEVEL

ROAD CLASSIFICATION
Heavy-duty ——— Light-duty ———
Medium-duty ——— Unimproved dirt ———
U.S. Route State Route



THIS MAP COMPLIES WITH NATIONAL MAP ACCURACY STANDARDS
FOR SALE BY U.S. GEOLOGICAL SURVEY, DENVER, COLORADO 80225, OR WASHINGTON, D.C. 20242.
STATE OF LOUISIANA, DEPARTMENT OF PUBLIC WORKS, BATON ROUGE, LOUISIANA 70804,
AND MISSISSIPPI RIVER COMMISSION, VICKSBURG, MISSISSIPPI 39181
A FOLDER DESCRIBING TOPOGRAPHIC MAPS AND SYMBOLS IS AVAILABLE ON REQUEST

ZACHARY, LA.
N3030—W9100/15
1963
AMS 7745 II—SERIES V785