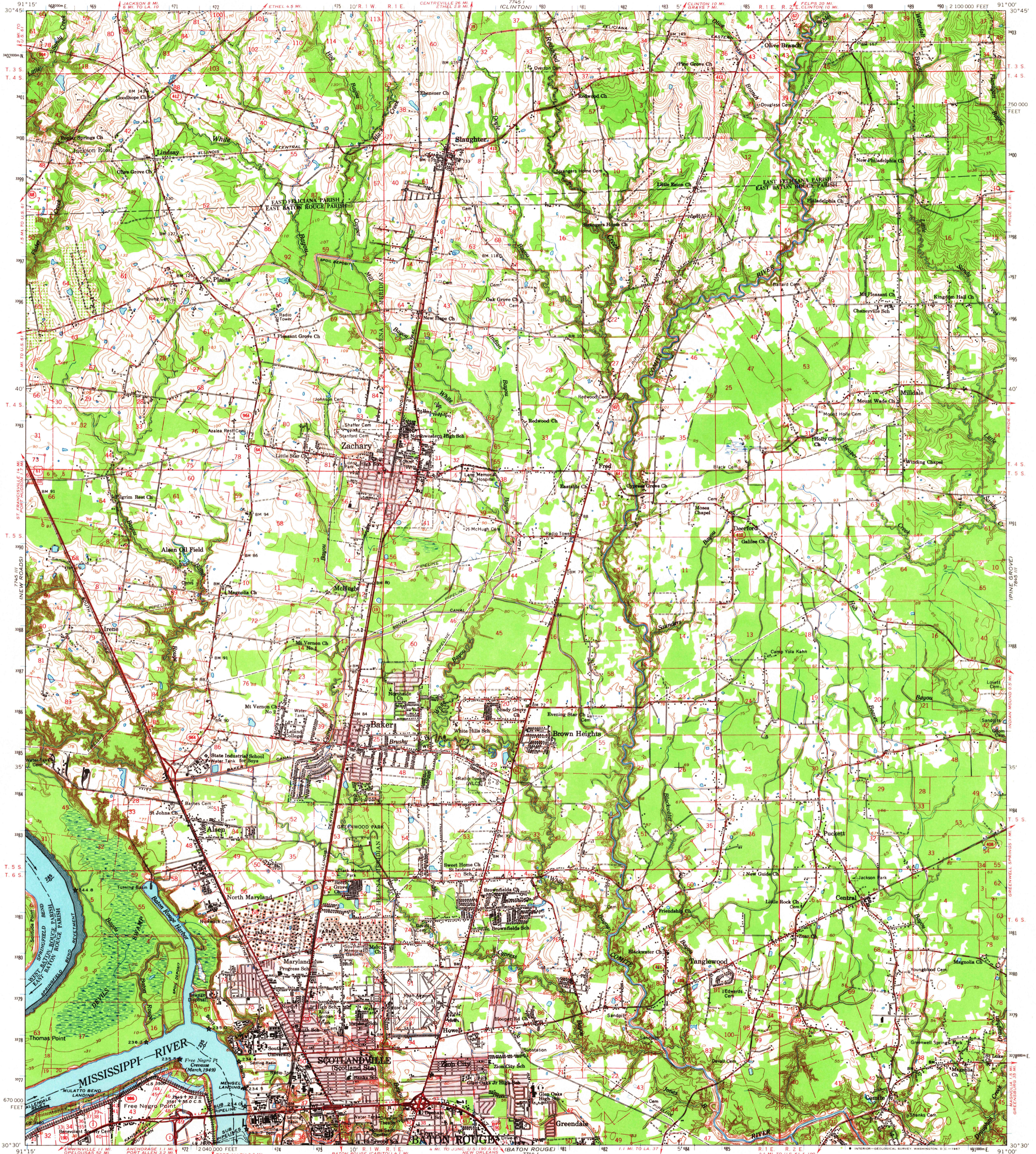


UNITED STATES
DEPARTMENT OF THE INTERIOR
GEOLOGICAL SURVEY

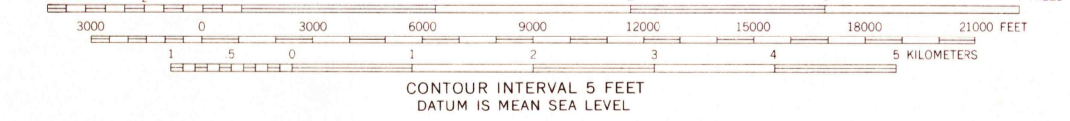
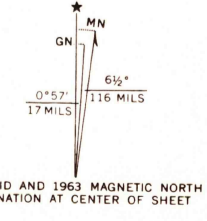
ZACHARY QUADRANGLE
LOUISIANA
15 MINUTE SERIES (TOPOGRAPHIC)



Prepared by the Mississippi River Commission
Published by the Geological Survey

Control by USGS, USC&GS and Louisiana Geodetic Survey
Compiled in 1964 from 1:24,000-scale, USGS maps dated 1963

Polyconic projection. 1927 North American datum
10,000-foot grid based on Louisiana coordinate system,
south zone
1300-meter Universal Transverse Mercator grid ticks,
zone 15, shown in blue
Red tint indicates areas in which only landmarks
buildings are shown
No distinction is made between dwellings, bars, commercial,
and industrial buildings
Distances on Mississippi River, above Head of Passes,
are shown at 5 mile intervals



ROAD CLASSIFICATION

Heavy-duty	Light-duty
Medium-duty	Unimproved dirt
U.S. Route	State Route

THIS MAP COMPLIES WITH NATIONAL MAP ACCURACY STANDARDS
FOR SALE BY U.S. GEOLOGICAL SURVEY, DENVER, COLORADO 80225, OR WASHINGTON, D. C. 20242,
STATE OF LOUISIANA, DEPARTMENT OF PUBLIC WORKS, BATON ROUGE, LOUISIANA 70804,
AND MISSISSIPPI RIVER COMMISSION, VICKSBURG, MISSISSIPPI 39181
A FOLDER DESCRIBING TOPOGRAPHIC MAPS AND SYMBOLS IS AVAILABLE ON REQUEST

USGS
Historical File
Topographic Division
ZACHARY, LA.
N3030-W9100/15
1963
AMS 7745 II-SERIES V785

2255
1937