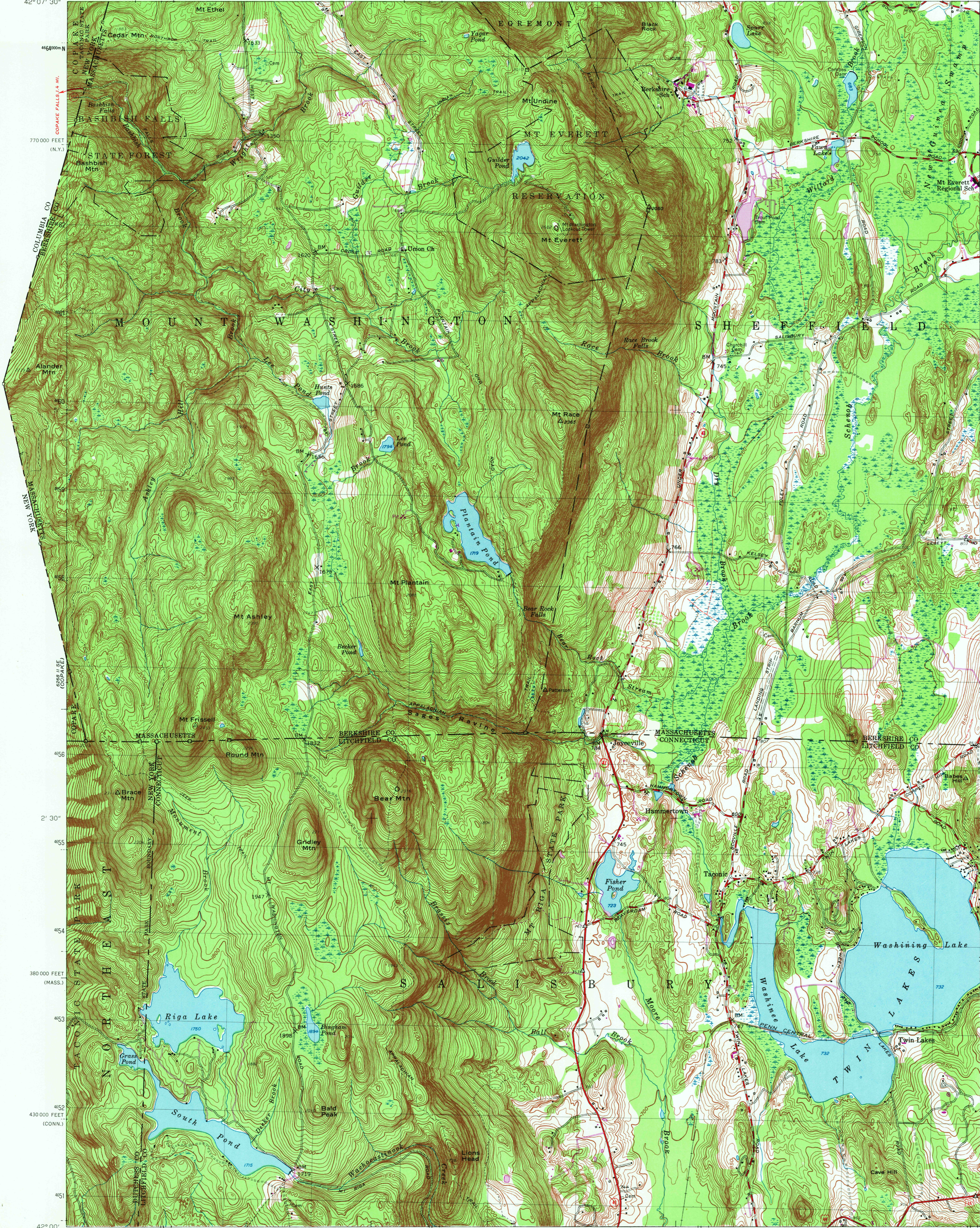


73° 30' 42° 07' 30" 1730 000 FEET (N.Y.) 926 000 E 6368 III NW (EGREMONT) 930 25' 1420 000 FEET (CONN.) 932 90000 FEET (MASS.) 73° 22' 30" 42° 07' 30"



CONVERSION SCALES

Feet	Meters
15000	4500
14000	4200
13000	3900
12000	3600
11000	3300
10000	3000
9000	2700
8000	2400
7000	2100
6000	1800
5000	1500
4000	1200
3000	900
2000	600
1000	300
0	0

To convert feet to meters multiply by 3.048
To convert meters to feet multiply by 3.2808

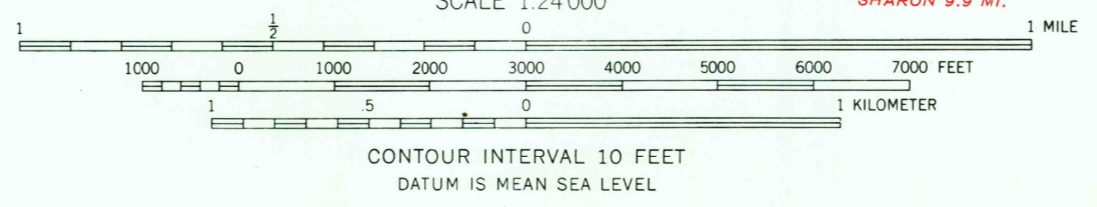
Mapped, edited, and published by the Geological Survey
Control by USGS, USC&GS, Connecticut Geodetic Survey, and
Massachusetts Harbor and Land Commission

Culture and drainage, in Connecticut and New York, in part compiled from
aerial photographs. Topography by planetable surveys 1944
Topography in Massachusetts from aerial photographs by photogrammetric
methods. Aerial photographs taken 1942. Field check 1946
Revised 1958

Polyconic projection. 1927 North American datum
10,000-foot grids based on Massachusetts coordinate system, mainland zone,
Connecticut coordinate system, and New York coordinate system, east zone
1000-meter Universal Transverse Mercator grid, zone 19

Fine red dashed lines indicate selected fence and field lines
visible on aerial photographs. This information is unchecked

UTM GRID AND 1969 MAGNETIC NORTH
DECLINATION AT CENTER OF SHEET



THIS MAP IS AVAILABLE WITH OR WITHOUT SHADED RELIEF OVERPRINT
THIS MAP COMPLIES WITH NATIONAL MAP ACCURACY STANDARDS
FOR SALE BY U.S. GEOLOGICAL SURVEY, RESTON, VIRGINIA 22092
A FOLDER DESCRIBING TOPOGRAPHIC MAPS AND SYMBOLS IS AVAILABLE ON REQUEST



ROAD CLASSIFICATION

Heavy-duty	Light-duty
Medium-duty	Unimproved dirt
U.S. Route	State Route

BASHBISH FALLS, MASS.-CONN.-N. Y.
N 4200-W 7322.5/7.5

1958
PHOTOREVISED 1969
AMS 6368 III SW-SERIES V814

Revisions shown in purple compiled in cooperation with
Connecticut Highway Department from aerial photographs taken 1969
This information not field checked

JUN 29 1981

1075

USGS
HISTORICAL FILE
NATIONAL MAPPING DIVISION