

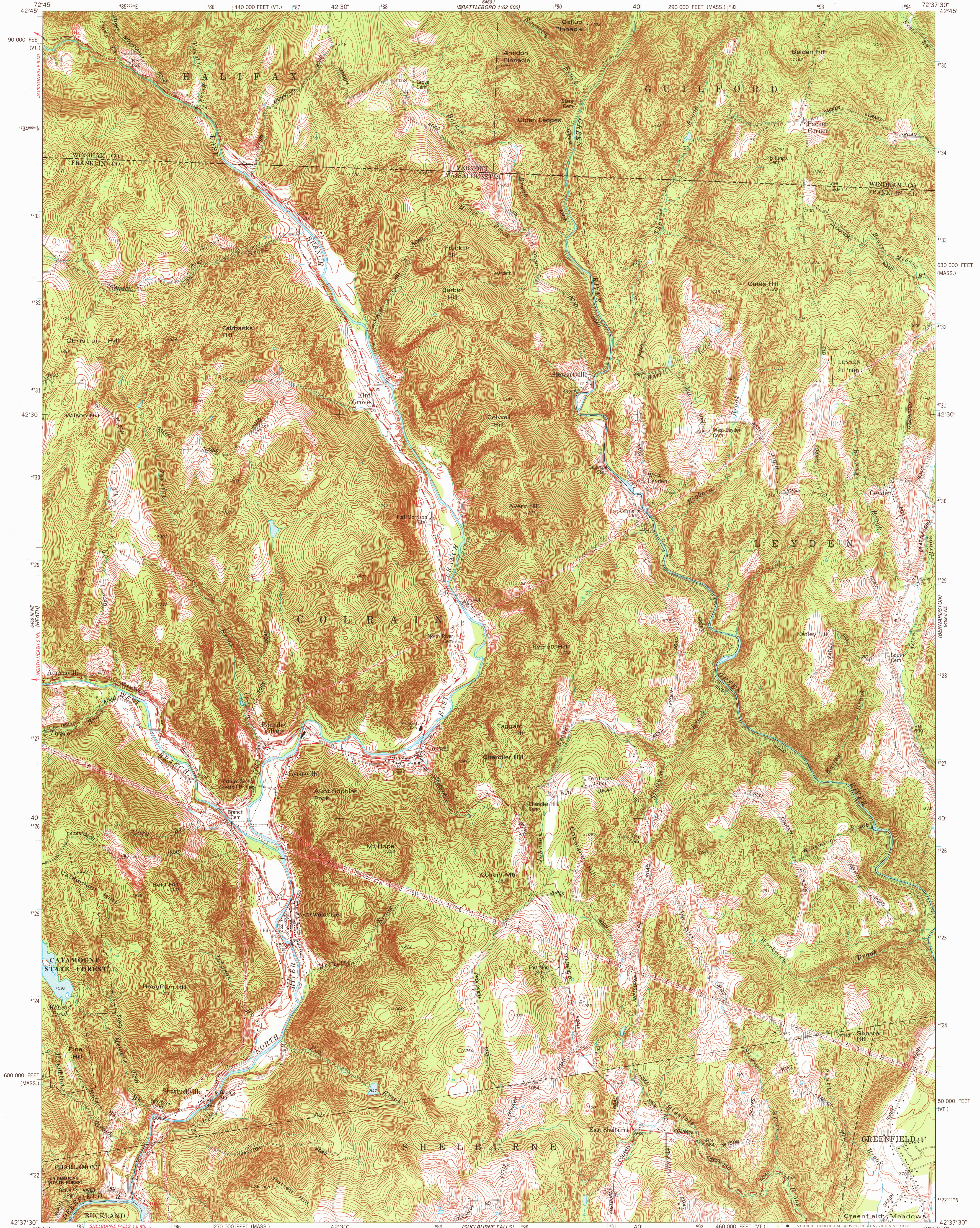
6661  
1:62,500  
(BRATTLEBORO)

UNITED STATES  
DEPARTMENT OF THE INTERIOR  
GEOLOGICAL SURVEY

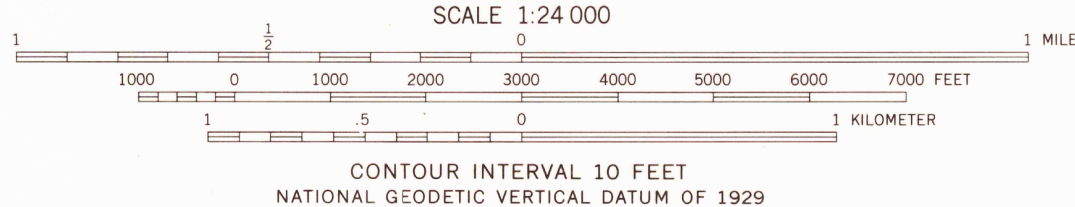
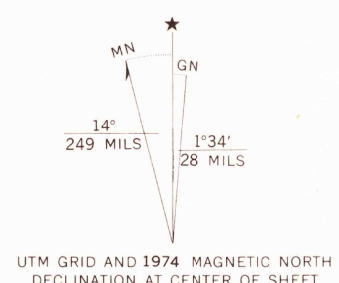
COMMONWEALTH OF MASSACHUSETTS  
DEPARTMENT OF PUBLIC WORKS

COLRAIN QUADRANGLE  
MASSACHUSETTS—VERMONT  
7.5 MINUTE SERIES (TOPOGRAPHIC)

6661  
1:62,500  
(BRATTLEBORO)



Mapped, edited, and published by the Geological Survey  
Control by USGS, NOS/NOAA, and Massachusetts Geodetic Survey  
Topography by planetable surveys 1937 and 1944  
Revised from aerial photographs taken 1972. Field checked 1974  
Polyconic projection. 1927 North American datum  
10,000-foot grid ticks based on Massachusetts datum system,  
mainland zone, and Vermont coordinate system  
1000-meter Universal Transverse Mercator grid ticks,  
zone 18, shown in blue  
Fine red dashed lines indicate selected fence and field lines where  
generally visible on aerial photographs. This information is unchecked



ROAD CLASSIFICATION	
Primary highway, hard surface	Light-duty road, hard or improved surface
Secondary highway, hard surface	Unimproved road
Interstate Route	U.S. Route
	State Route

COLRAIN, MASS.—VT.  
N4237.5—W7237.5/7.5

USGS  
HISTORICAL FILE  
TOPOGRAPHIC DIVISION

1977  
AMS 6469 II NW—SERIES V814

THIS MAP COMPLIES WITH NATIONAL MAP ACCURACY STANDARDS  
FOR SALE BY U. S. GEOLOGICAL SURVEY, RESTON, VIRGINIA 22092  
A FOLDER DESCRIBING TOPOGRAPHIC MAPS AND SYMBOLS IS AVAILABLE ON REQUEST

FEB 1 1978

832