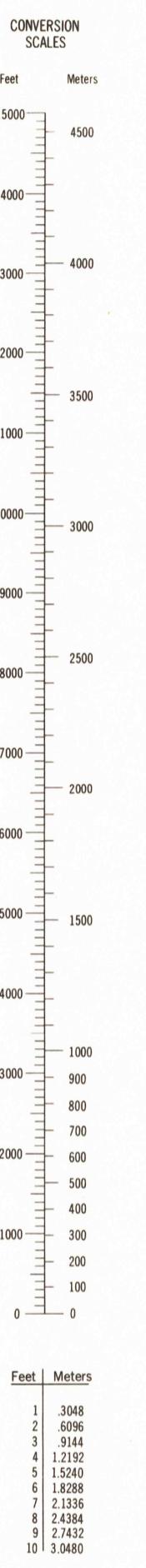
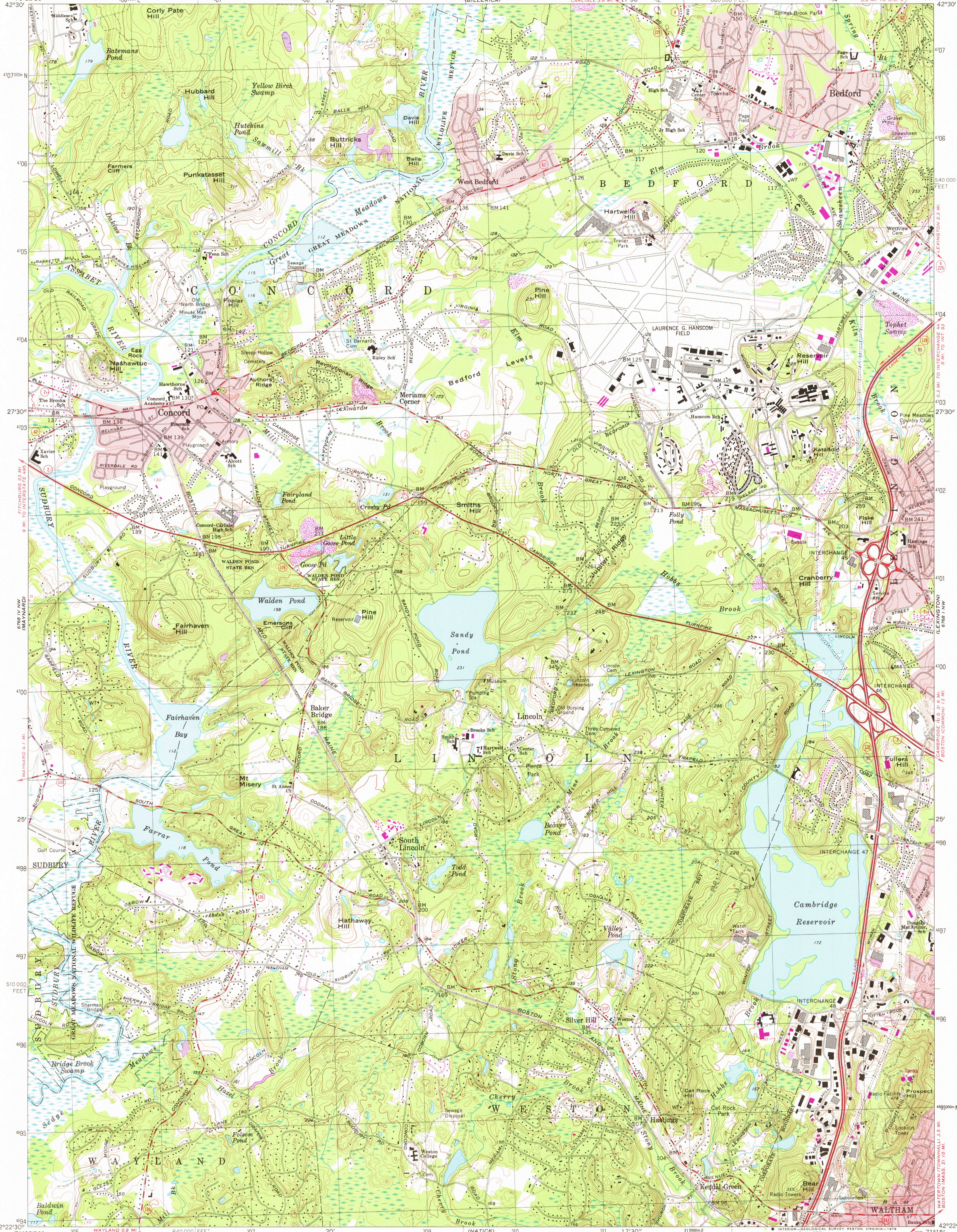


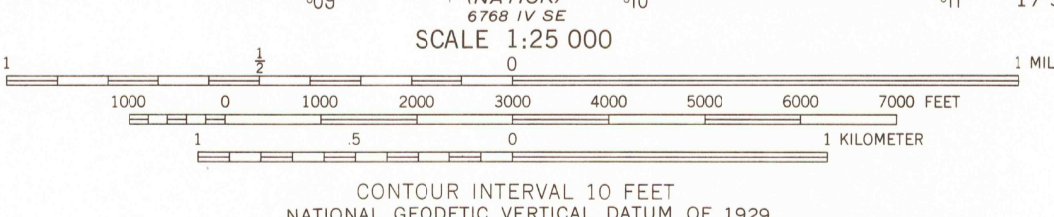
WESTPORT
67°19' 30" W

NEWTON
71°15' 00" W

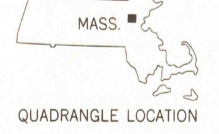


To convert feet to meters multiply by 0.3048
To convert meters to feet multiply by 3.2808

Mapped, edited, and published by the Geological Survey
Control by USGS, USC&GS, and Massachusetts Geodetic Survey
Topography by planimeter surveys 1940. Revised from
aerial photographs taken 1969. Field checked 1970
Polyconic projection. 1927 North American datum
10,000-foot grid based on Massachusetts coordinate system,
main and zone
100-meter Universal Transverse Mercator grid,
zone 19
Red tint indicates areas in which only landmark buildings are shown
There may be private inholdings within the boundaries
of the National or State reservations shown on this map
Revisions shown in purple and woodcut compiled in cooperation with State of
Massachusetts agencies from aerial photographs taken 1977 and
other source data. This information not field checked. Map edited 1979



ROAD CLASSIFICATION
Primary highway, hard surface
Secondary highway, hard surface
Light-duty road, hard or improved surface
Unimproved road
Interstate Route
U. S. Route
State Route



THIS MAP COMPLIES WITH NATIONAL MAP ACCURACY STANDARDS
FOR SALE BY U. S. GEOLOGICAL SURVEY, RESTON, VIRGINIA 22092
A FOLDER DESCRIBING TOPOGRAPHIC MAPS AND SYMBOLS IS AVAILABLE ON REQUEST

USGS
Historical File
Topographic Division
CONCORD, MASS.
N4222.5 - W7115.7.5
1970
PHOTOREVISED 1979
AMS 6768 IV NE—SERIES V814

FEB - 5 1980
7500