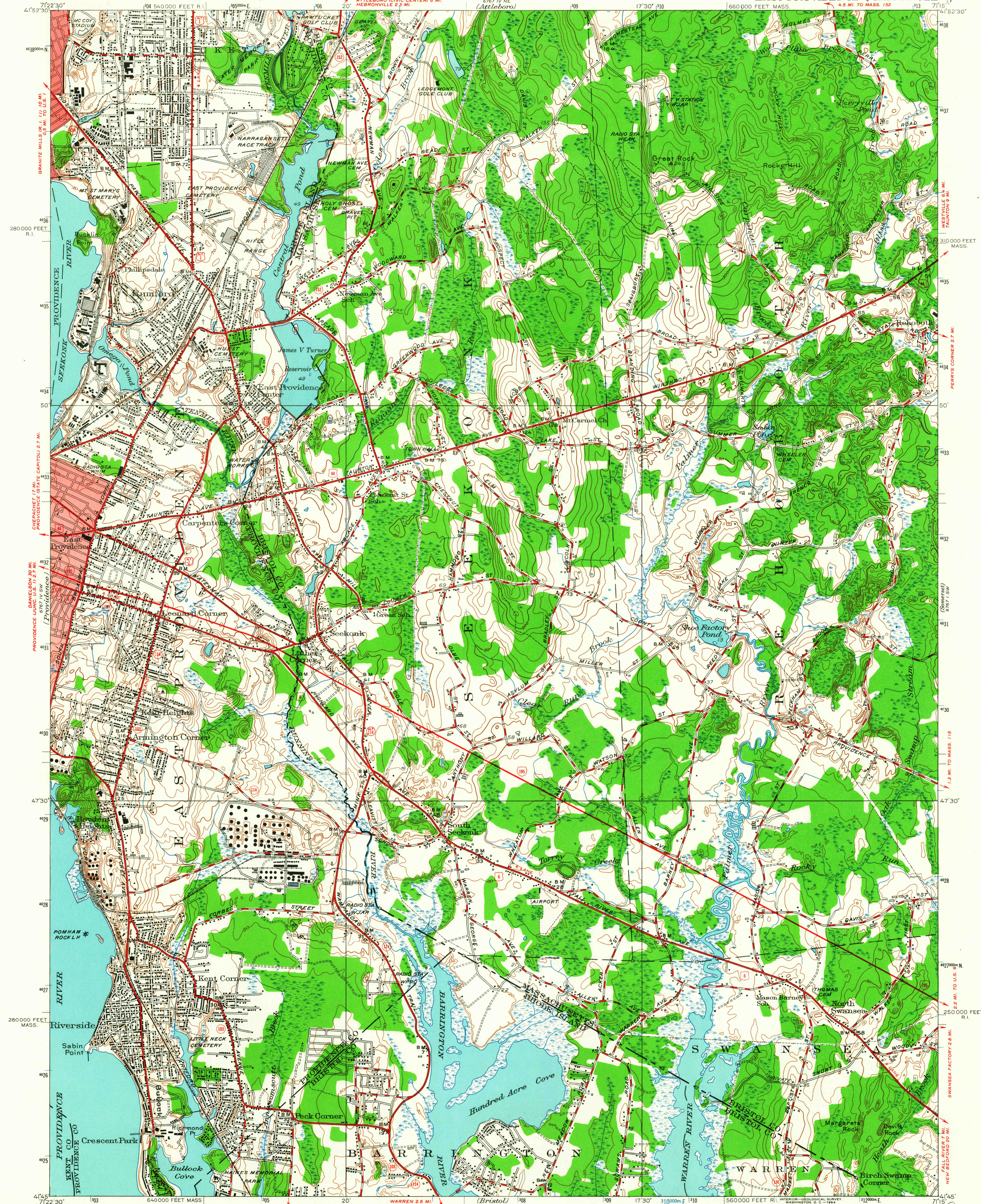


UNITED STATES NORTH ATTLEBORO 7.5 MI.
3.2 MI. TO U.S. I
DEPARTMENT OF THE INTERIOR
GEOLOGICAL SURVEY

MASSACHUSETTS-RHODE ISLAND
EAST PROVIDENCE QUADRANGLE



Topography by R.H. Runyan, H.D. Cummings,
Harold Williams, R.H. Lyddan, and Milton F. Denault
Surveyed in 1935 and 1939
Revised in 1949
Red tint indicates areas in which
only landmark buildings are shown

ROAD CLASSIFICATION
Heavy-duty ——— Light-duty ———
Medium-duty ——— Unimproved dirt ———
Interstate Route U.S. Route State Route

UTM GRID AND 1949 MAGNETIC NORTH
DECLINATION AT CENTER OF SHEET
141° 25' 28" M
1° 23' 28" M

SCALE 1:24,000

CONTOUR INTERVAL 10 FEET
DATUM IS MEAN SEA LEVEL

FOR SALE BY U.S. GEOLOGICAL SURVEY, WASHINGTON 25, D. C.
A FOLDER DESCRIBING TOPOGRAPHIC MAPS AND SYMBOLS IS AVAILABLE ON REQUEST

USGS
Historical File
Topographic Division

EAST PROVIDENCE, MASS.-R.I.
N 4145-W 7115/7.5

1949

AMS 6767 IV SE-SERIES V815

U.S.G.S.
FILE COPY
TOPOGRAPHIC DIVISION

APR 28 1964