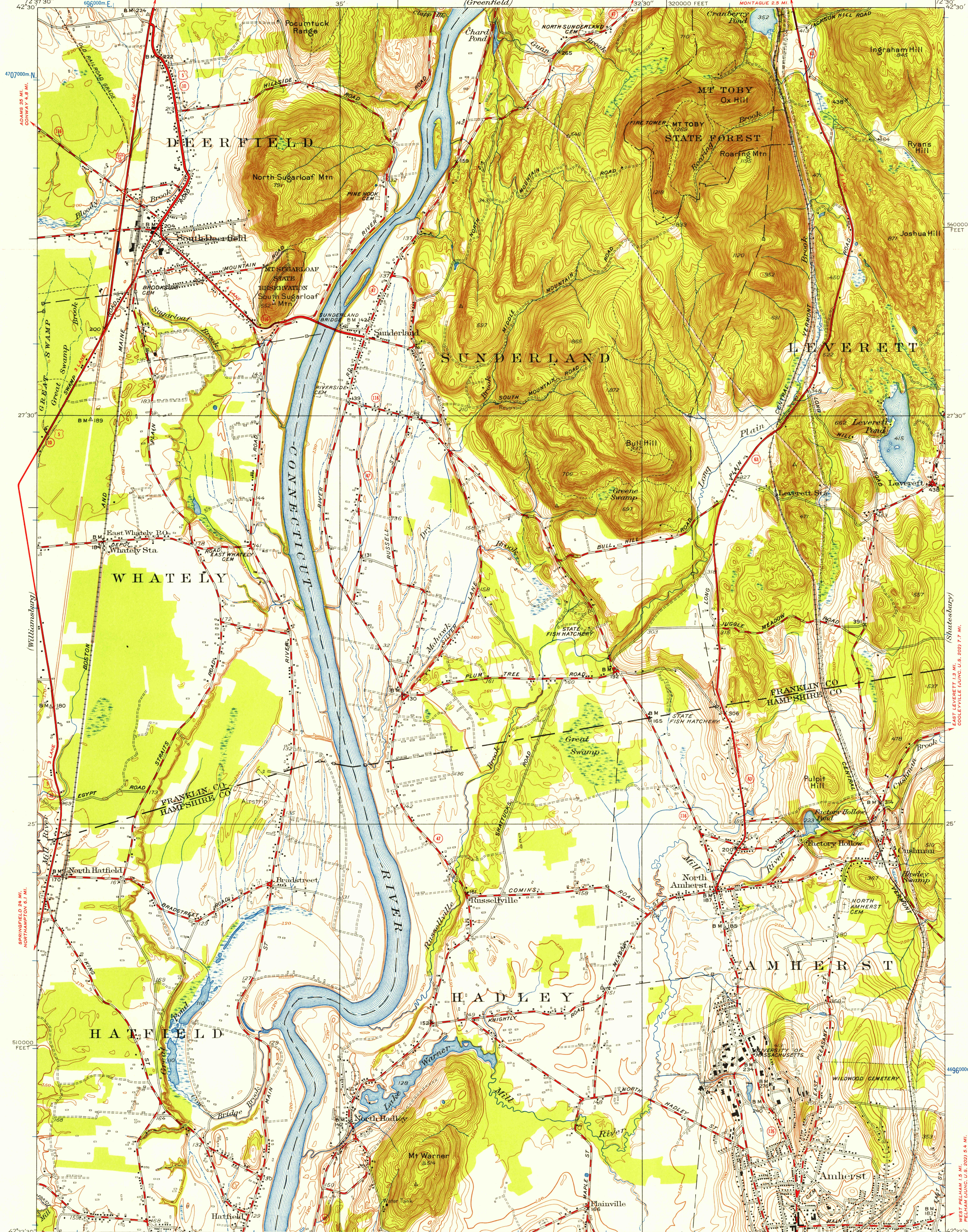


UNITED STATES
DEPARTMENT OF THE INTERIOR
GEOLOGICAL SURVEY

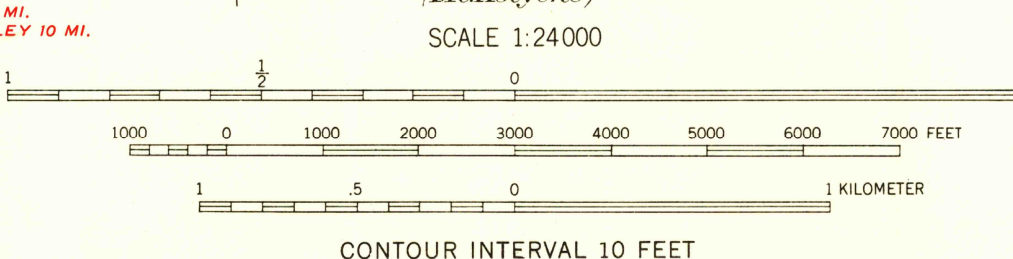
STATE OF MASSACHUSETTS
DEPARTMENT OF PUBLIC WORKS
(Greenfield)

MT. TOBY QUADRANGLE
MASSACHUSETTS
75-MINUTE SERIES (TOPOGRAPHIC)



Mapped, edited, and published by the Geological Survey
Control by USGS, USCS&GS, and Mass. Geod. Survey
Topography by plane-table surveys 1935. Revised 1955
Polyconic projection, 1927 North American datum
10000-foot grid based on Mass. (Mainland)
coordinate system
1000 meter Universal Transverse Mercator Grid ticks,
zone 18, shown in blue

APPROXIMATE MEAN
DECLINATION, 1955



FOR SALE BY U. S. GEOLOGICAL SURVEY, WASHINGTON 25, D. C.
A FOLDER DESCRIBING TOPOGRAPHIC MAPS AND SYMBOLS IS AVAILABLE ON REQUEST

USGS
Historical File
Topographic Division

ROAD CLASSIFICATION
Heavy-duty ——— Light-duty ———
Medium-duty ——— Unimproved dirt ———
U. S. Route ——— State Route ———
MT. TOBY, MASS.
N4222.5-W7230.75

U.S.G.S.
FILE COPY
TOPOGRAPHIC DIVISION

1955

REFLECT TO:
USGS AND HISTORICAL MAP ARCHIVES

JAN 9 1957

4160