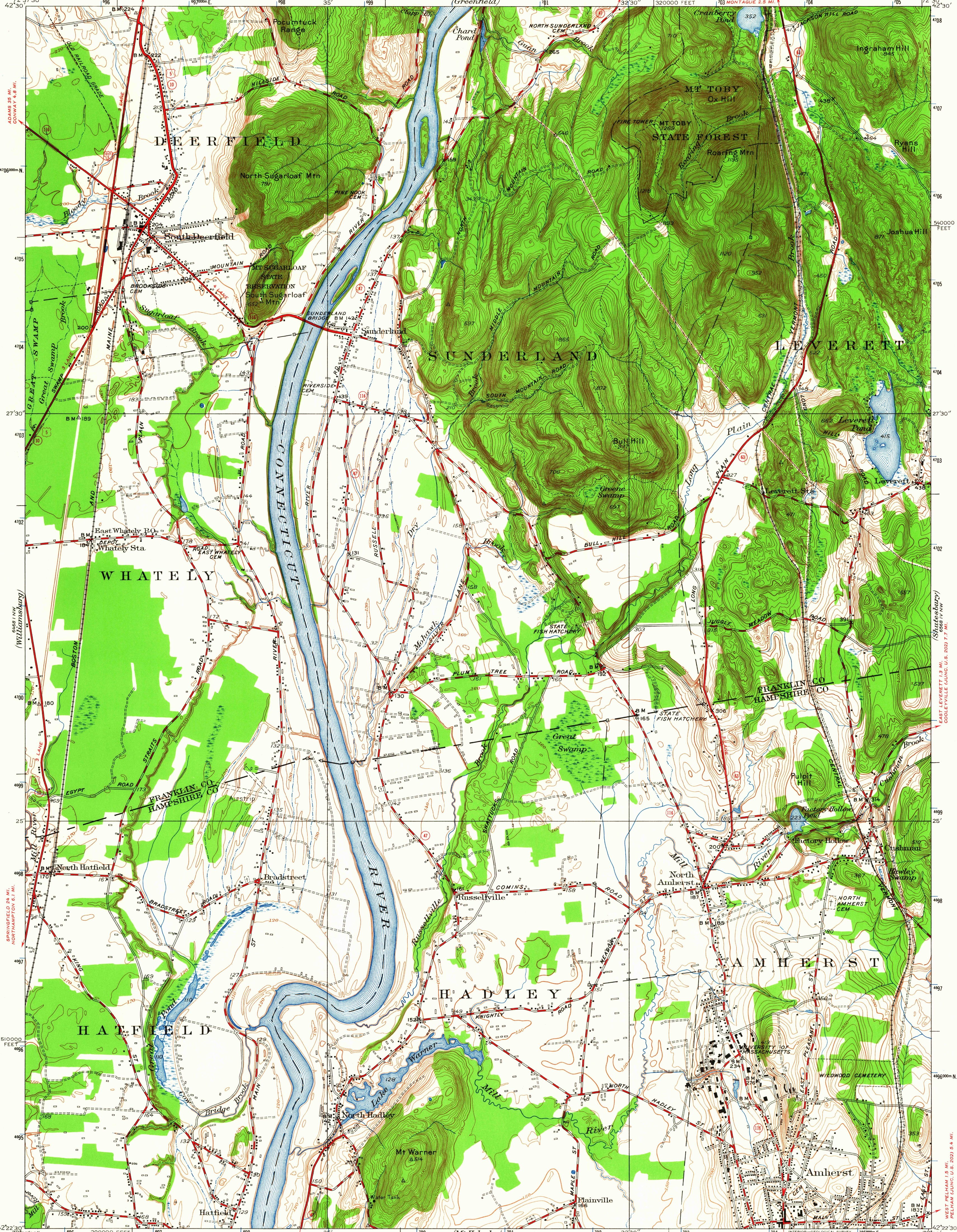


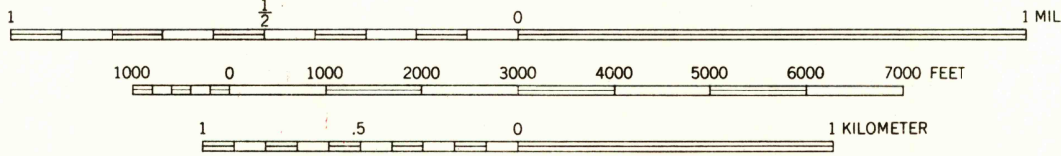
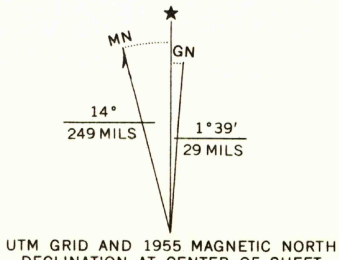
UNITED STATES
DEPARTMENT OF THE INTERIOR
GEOLOGICAL SURVEY

STATE OF MASSACHUSETTS
DEPARTMENT OF PUBLIC WORKS

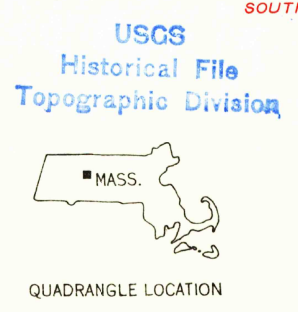
MT. TOBY QUADRANGLE
MASSACHUSETTS
75-MINUTE SERIES (TOPOGRAPHIC)



Mapped, edited, and published by the Geological Survey
Control by USGS, USC&GS, and Mass. Geod. Survey
Topography by plane-table surveys 1935 Revised 1955
Polyconic projection, 1927 North American datum
10,000-foot grid based on Mass. (Mainland)
coordinate system
1000-meter Universal Transverse Mercator grid ticks,
zone 18, shown in blue



FOR SALE BY U. S. GEOLOGICAL SURVEY, WASHINGTON 25, D. C.
A FOLDER DESCRIBING TOPOGRAPHIC MAPS AND SYMBOLS IS AVAILABLE ON REQUEST



ROAD CLASSIFICATION
Heavy-duty ——— Light-duty ———
Medium-duty ——— Unimproved dirt ———
U.S. Route ——— State Route ———
MT. TOBY, MASS.
N42225-W7230/7.5

1955
AMS 6468 I NE-SERIES V814
REQUEST TO:
USGS HISTORICAL MAP ARCHIVES

APR 20 1964